



PERU ELEMENTARY SCHOOL DISTRICT 124

Peru, La Salle County, Illinois

Addition and Renovation Northview Elementary School Design Development Manual

Healy | Bender Project No. 10-3113-145

Tab 3 Sheet 3-1.00 - Tab 3 Sheet 3-5.03

First Draft

January 29, 2014



Pre-Kindergarten Sp. Ed. Classroom

	Unit Area (NSF)	Qty	Total Area (NSF)
Actual	644	1	644

Design Occupancy

1 Instructor + 16 Students

Typical Room Dimensions (Feet)

21.0 x **30.7**

Built-In Casework

- 1 48"x24"x84" Lockable Teacher wardrobe unit w/ hooks and adjustable shelves
- 1 48"x24"x84" Lockable Teacher storage unit w/ adjustable shelves

Room Finishes

Ceiling	2'x2' AC.T.
Walls	Painted CMU
Casework	Plastic Laminate
Horizontal Surfaces	Plastic Laminate
Floor	VCT
Floor Base	Rubber

Visual Display

- 12 Non-Glare Markerboard (in linear feet) - Main Teaching Space
- 4 Tackboard (in linear feet) - Main Teaching Space
- 4 Tackboard (in linear feet) - Main Teaching Space
- 6 Markerboard (in linear feet) - Accessory Teaching Space
- 4 Tackboard (in linear feet) - Accessory Teaching Space
- 4 Tackboard (in linear feet) - Accessory Teaching Space
- 20 12" Tackstrip (in linear feet) - Main Teaching Space
- 14 12" Tackstrip (in linear feet) - Accessory Teaching Space

Notes:

Tackboards and markerboards to be mounted lower for younger student accessibility

Furniture and Equipment (Not in Contract)

- Student desks and chairs
- 1 6'-0"x3'-0" Student Worktable with (4) Chairs (NIC)
- Teacher desk and chair
- 2 2-drawer teacher file cabinets
- Pencil Sharpener

Technology

- 1 Ceiling Mounted Data Projector (NIC) - Power and Data Outlets Provided
- 1 Teacher Computer and Printer (NIC) - Power and Data Outlets Provided
- 1 Data and Auxiliary Connections to Teacher Station
- 1 Telephone (NIC) - Outlet Provided

Plumbing, Mechanical and Electrical Systems

Electrical outlets conveniently located
 Analog Clock
 Ceiling Mounted Speaker

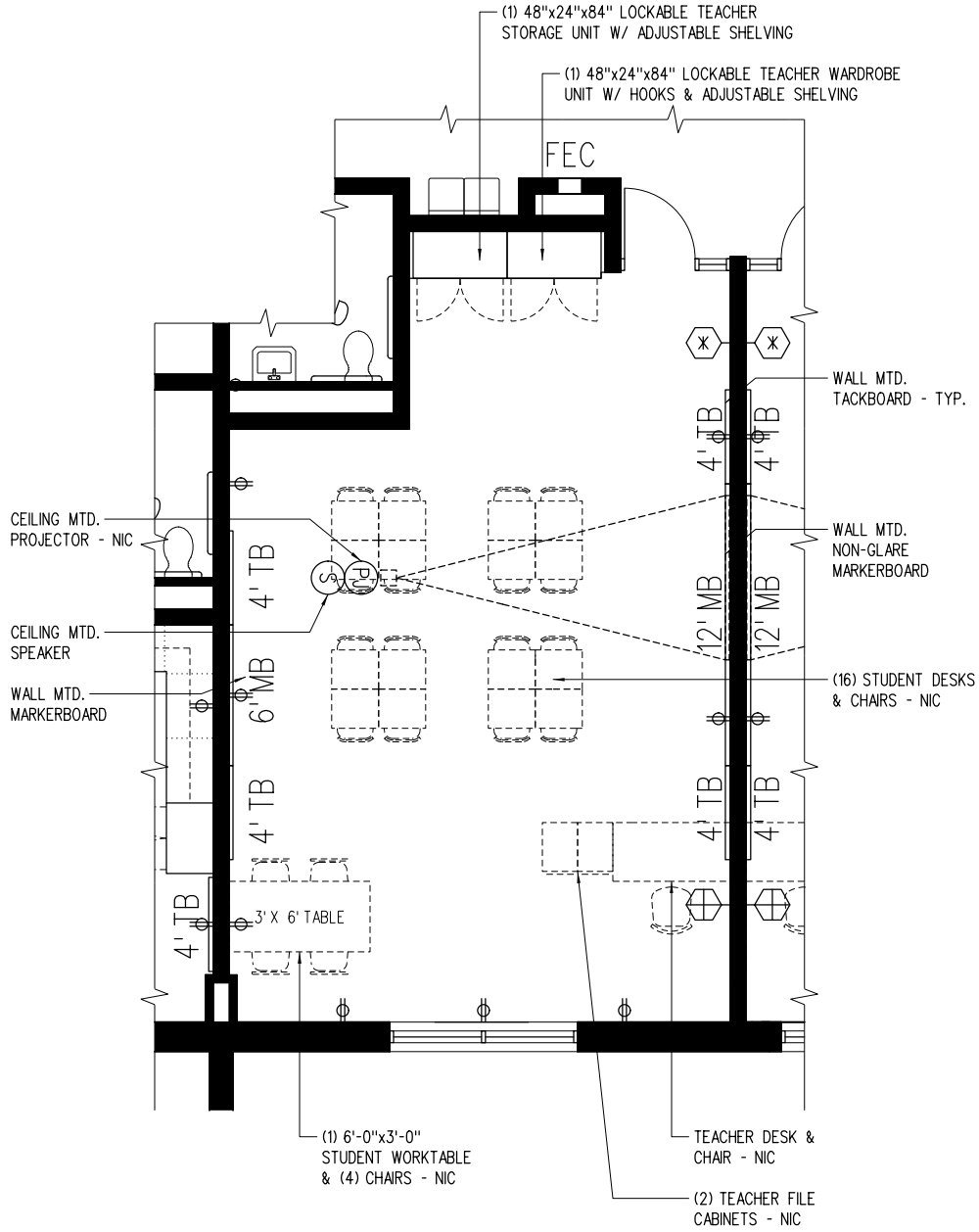
Lighting

Access to Natural Daylight (Windows)
 Fluorescent Lighting
 Dual Level Light Switches

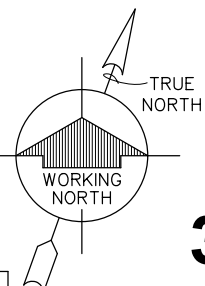
Other Considerations

3-1.00

Pre-Kindergarten Sp. Ed. Classroom

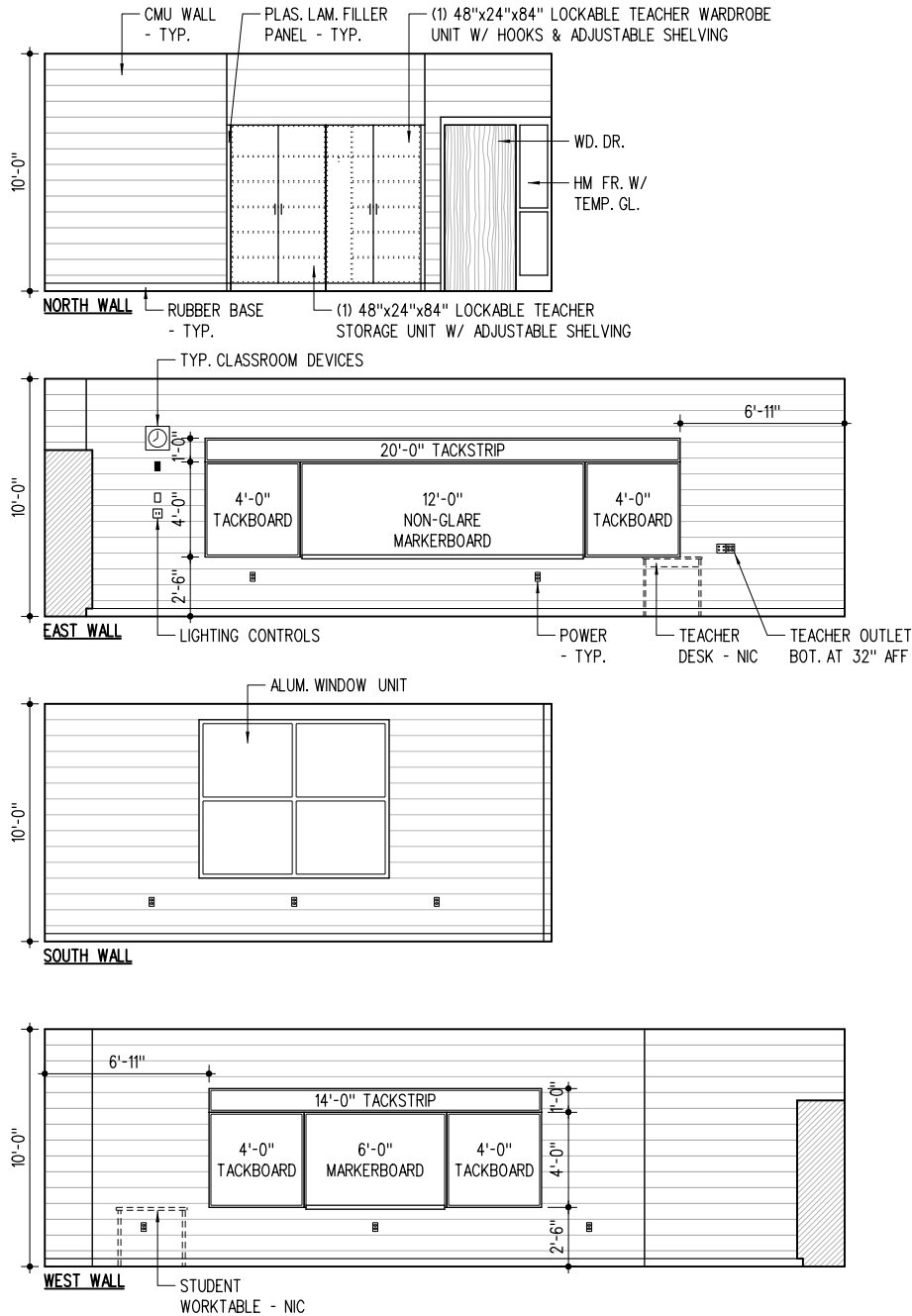


FLOOR PLAN



3-1.01

Pre-Kindergarten Sp. Ed. Classroom

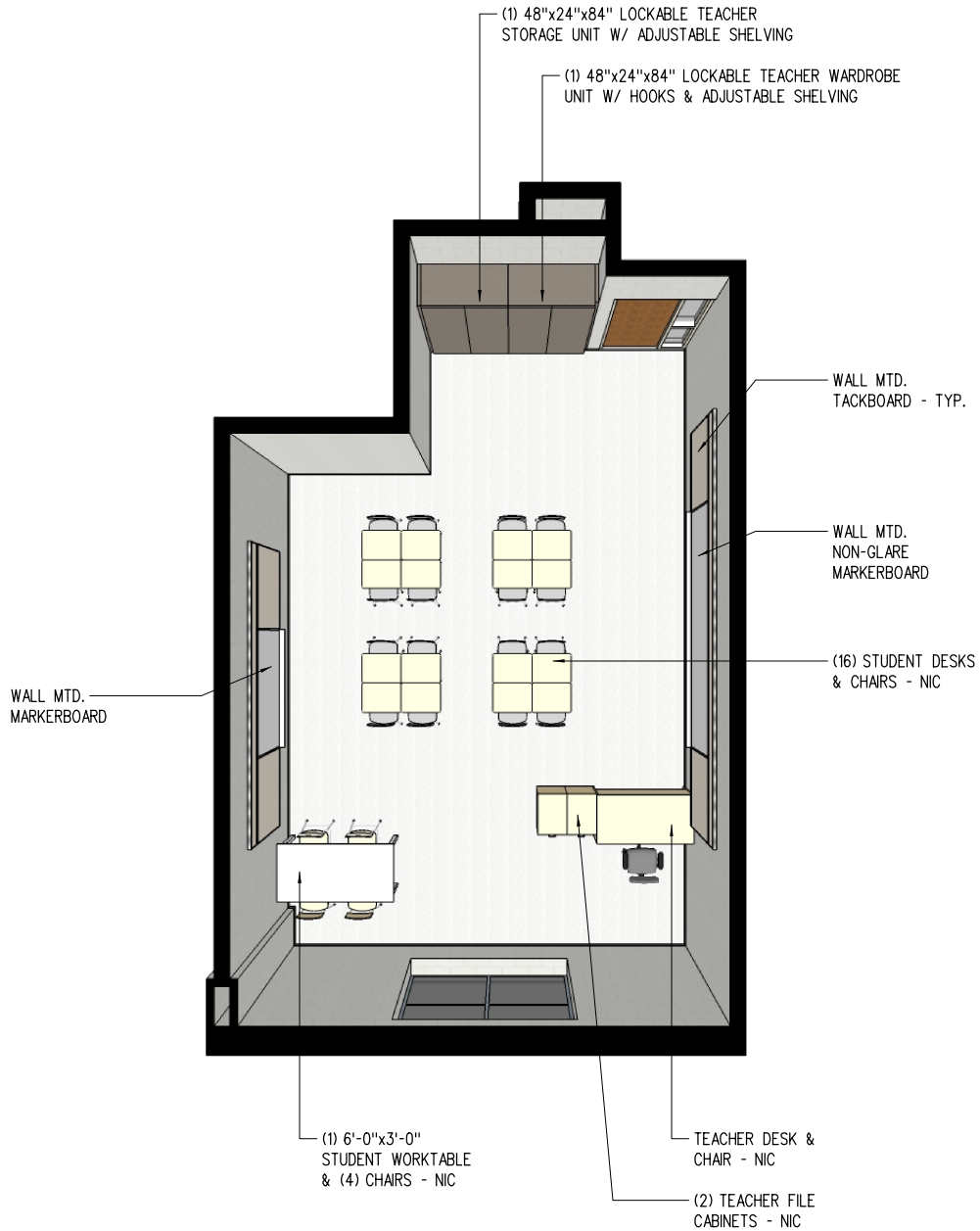


INTERIOR ELEVATIONS



3-1.02

Pre-Kindergarten Sp. Ed. Classroom



PERSPECTIVE

NS

3-1.03

Kindergarten Sp. Ed. Classroom

	Unit Area (NSF)	Qty	Total Area (NSF)
Actual	640	1	640

Design Occupancy

1 Instructor + 16 Students

Typical Room Dimensions (Feet)

18.8 x 34.0

Built-In Casework

- 1 48"x24"x84" Lockable Teacher wardrobe unit w/ hooks and adjustable shelves
- 1 48"x24"x84" Lockable Teacher storage unit w/ adjustable shelves

Visual Display

- 12 Non-Glare Markerboard (in linear feet) - Main Teaching Space
- 4 Tackboard (in linear feet) - Main Teaching Space
- 4 Tackboard (in linear feet) - Main Teaching Space
- 6 Markerboard (in linear feet) - Accessory Teaching Space
- 4 Tackboard (in linear feet) - Accessory Teaching Space
- 4 Tackboard (in linear feet) - Accessory Teaching Space
- 20 12" Tackstrip (in linear feet) - Main Teaching Space
- 14 12" Tackstrip (in linear feet) - Accessory Teaching Space

Furniture and Equipment (Not in Contract)

- Student desks and chairs
- 1 6'-0"x3'-0" Student Worktable with (4) Chairs (NIC)
- Teacher desk and chair
- 2 2-drawer teacher file cabinets
- Pencil Sharpener

Technology

- 1 Ceiling Mounted Data Projector (NIC) - Power and Data Outlets Provided
- 1 Teacher Computer and Printer (NIC) - Power and Data Outlets Provided
- 1 Data and Auxiliary Connections to Teacher Station
- 1 Telephone (NIC) - Outlet Provided

Plumbing, Mechanical and Electrical Systems

- Electrical outlets conveniently located
- Analog Clock
- Ceiling Mounted Speaker

Lighting

- Access to Natural Daylight (Windows)
- Fluorescent Lighting
- Dual Level Light Switches

Other Considerations

Room Finishes

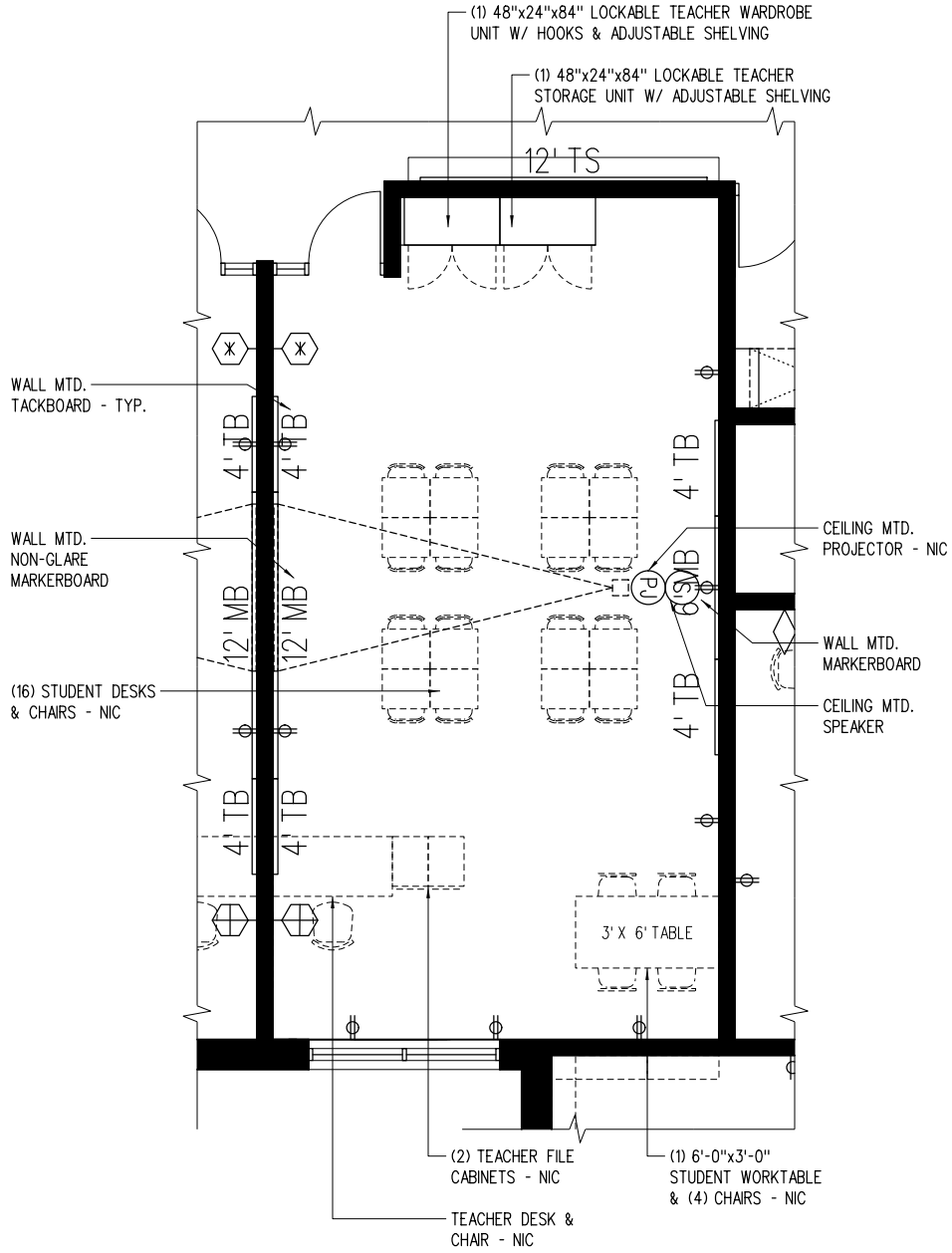
Ceiling	2'x2' AC.T.
Walls	Painted CMU
Casework	Plastic Laminate
Horizontal Surfaces	Plastic Laminate
Floor	VCT
Floor Base	Rubber

Notes:

Tackboards and markerboards to be mounted lower for younger student accessibility

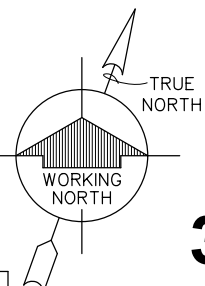
3-2.00

Kindergarten Sp. Ed. Classroom



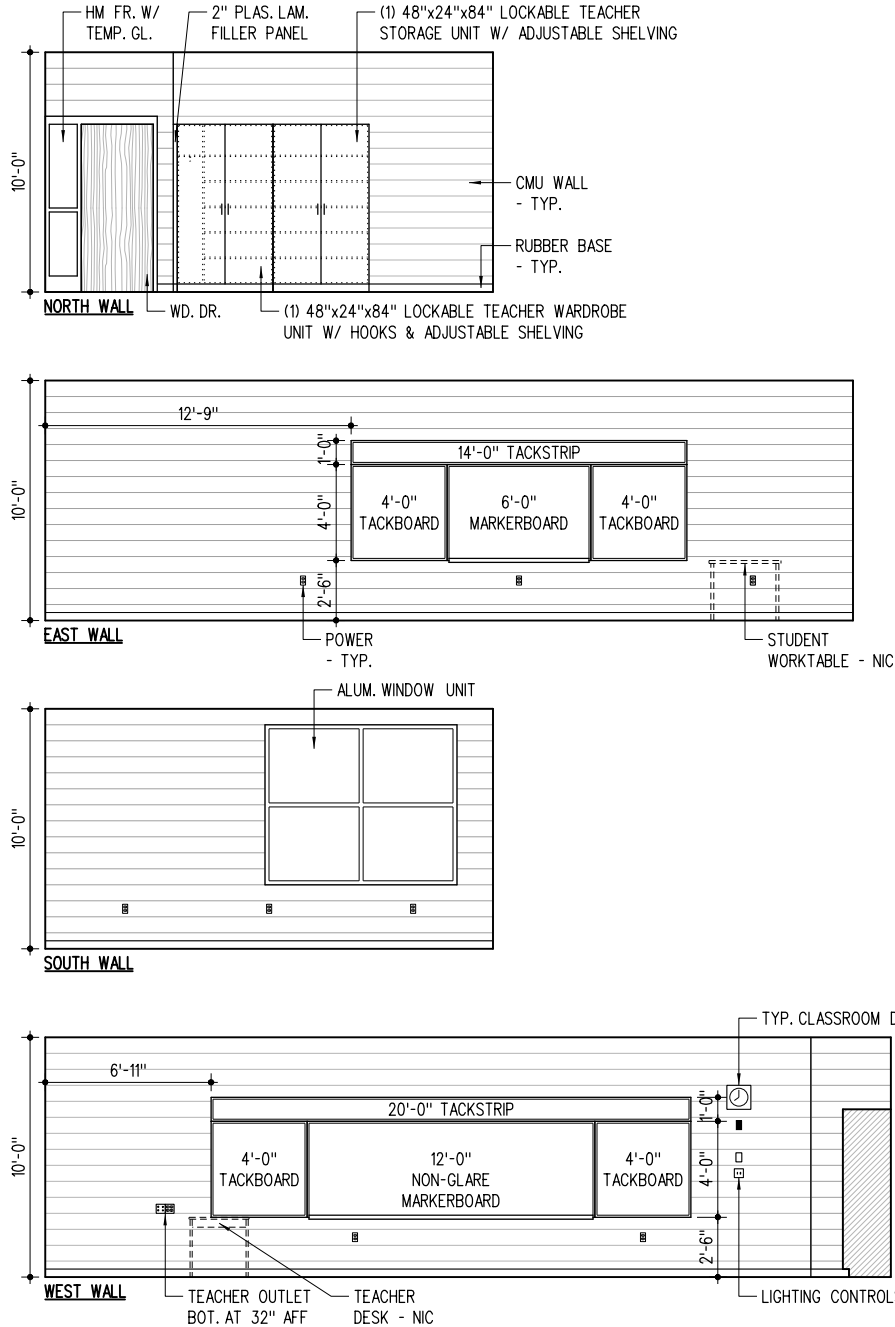
FLOOR PLAN

1/8" = 1'-0"



3-2.01

Kindergarten Sp. Ed. Classroom

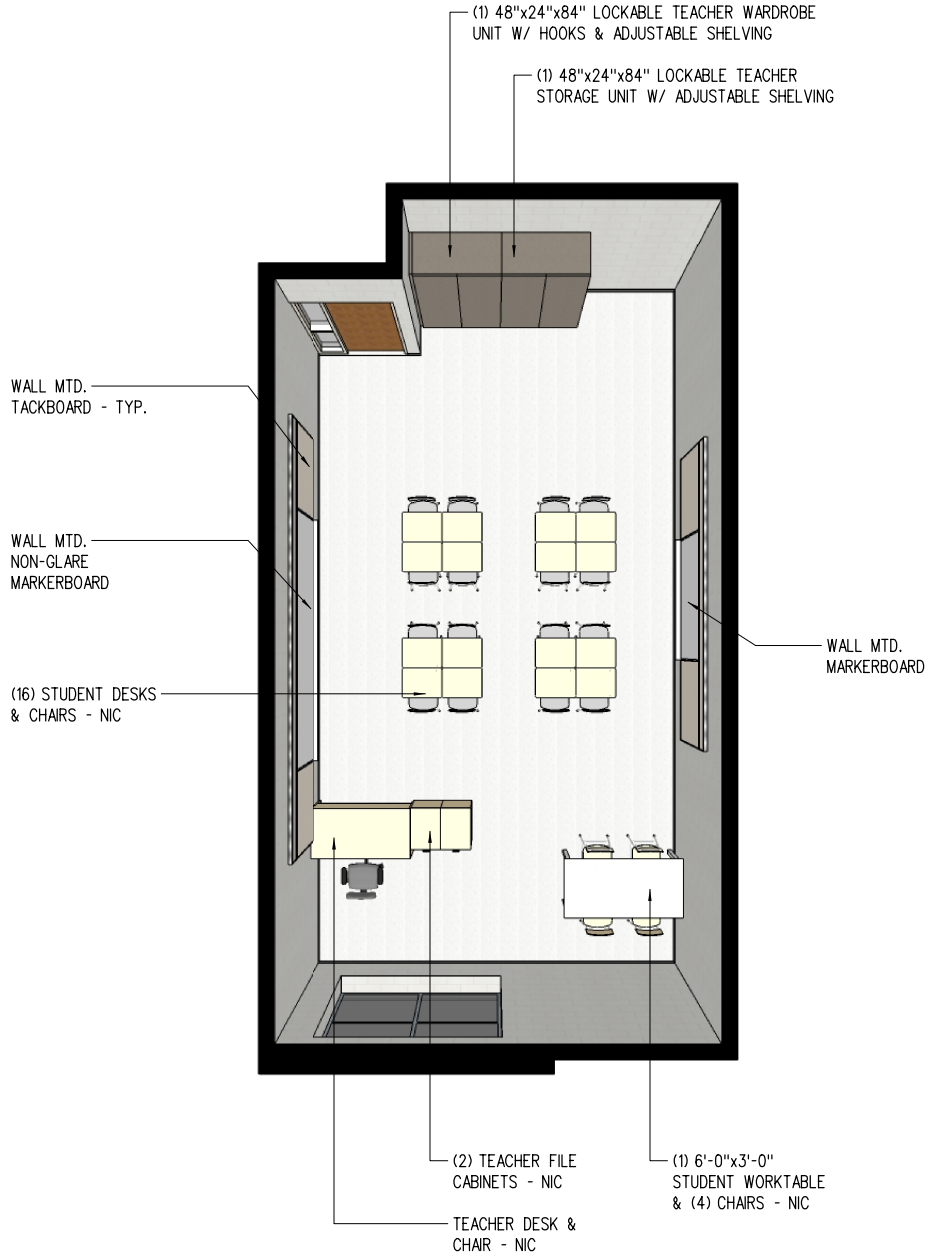


INTERIOR ELEVATIONS



3-2.02

Kindergarten Sp. Ed. Classroom



PERSPECTIVE

NS

3-2.03

1st Grade Sp. Ed. Classroom

	Unit Area (NSF)	Qty	Total Area (NSF)
Actual	634	1	634

Design Occupancy

1 Instructor + 16 Students

Typical Room Dimensions (Feet)

27.8 x **22.8**

Built-In Casework

- 1 48"x24"x84" Lockable Teacher wardrobe unit w/ hooks and adjustable shelves
- 1 48"x24"x84" Lockable Teacher storage unit w/ adjustable shelves

Room Finishes

Ceiling	2'x2' AC.T.
Walls	Painted CMU
Casework	Plastic Laminate
Horizontal Surfaces	Plastic Laminate
Floor	VCT
Floor Base	Rubber

Visual Display

- 12 Non-Glare Markerboard (in linear feet) - Main Teaching Space
- 4 Tackboard (in linear feet) - Main Teaching Space
- 4 Tackboard (in linear feet) - Main Teaching Space
- 6 Markerboard (in linear feet) - Accessory Teaching Space
- 4 Tackboard (in linear feet) - Accessory Teaching Space
- 4 Tackboard (in linear feet) - Accessory Teaching Space
- 20 12" Tackstrip (in linear feet) - Main Teaching Space
- 14 12" Tackstrip (in linear feet) - Accessory Teaching Space

Furniture and Equipment (Not in Contract)

- Student desks and chairs
- 1 6'-0"x3'-0" Student Worktable with (4) Chairs (NIC)
- Teacher desk and chair
- 2 2-drawer teacher file cabinets
- Pencil Sharpener

Technology

- 1 Ceiling Mounted Data Projector (NIC) - Power and Data Outlets Provided
- 1 Teacher Computer and Printer (NIC) - Power and Data Outlets Provided
- 1 Data and Auxiliary Connections to Teacher Station
- 1 Telephone (NIC) - Outlet Provided

Plumbing, Mechanical and Electrical Systems

- Electrical outlets conveniently located
- Analog Clock
- Ceiling Mounted Speaker

Lighting

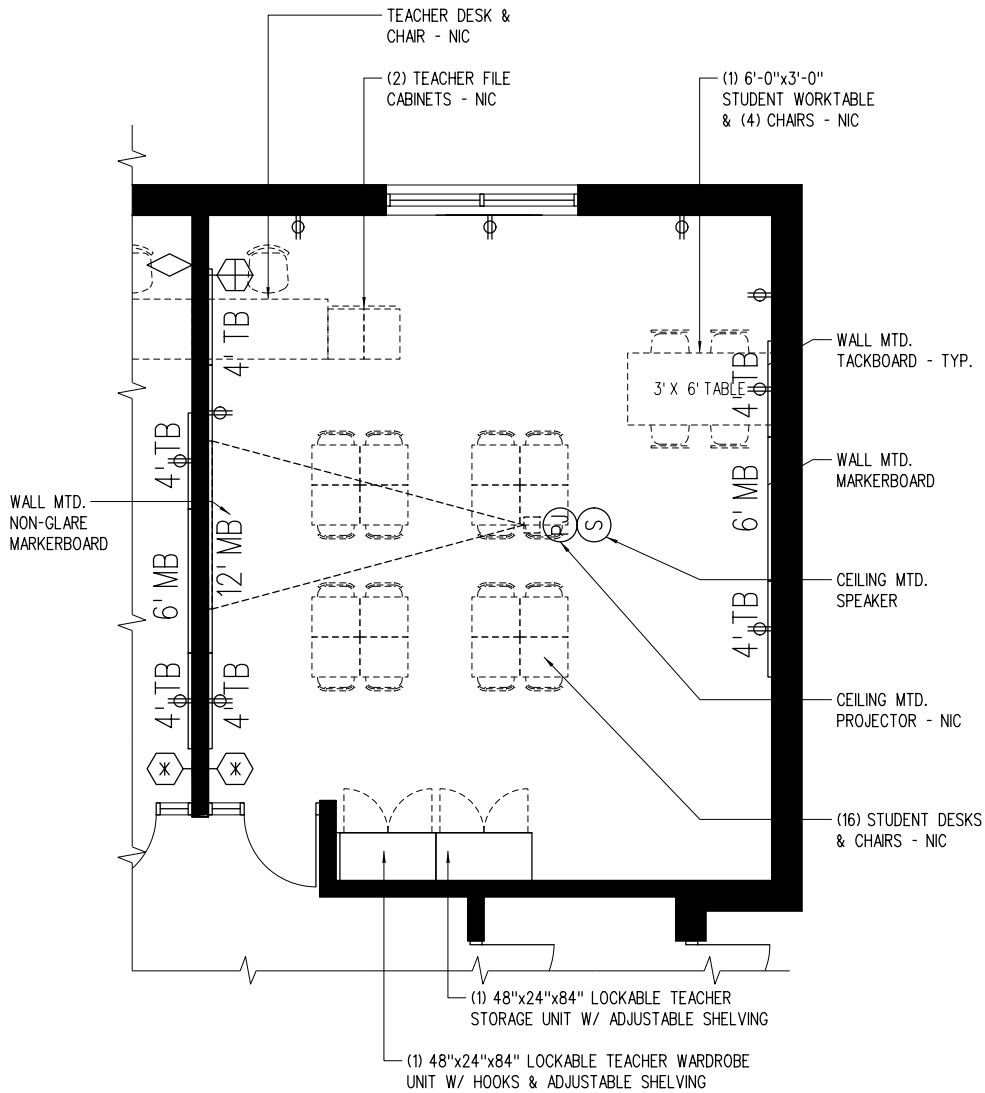
- Access to Natural Daylight (Windows)
- Fluorescent Lighting
- Dual Level Light Switches

Other Considerations

Notes:

3-3.00

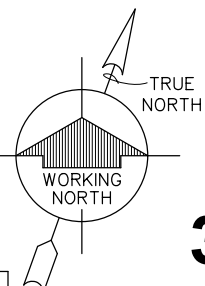
1st Grade Sp. Ed. Classroom



FLOOR PLAN

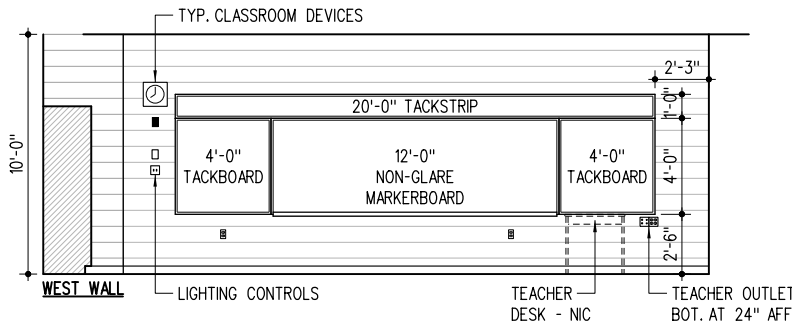
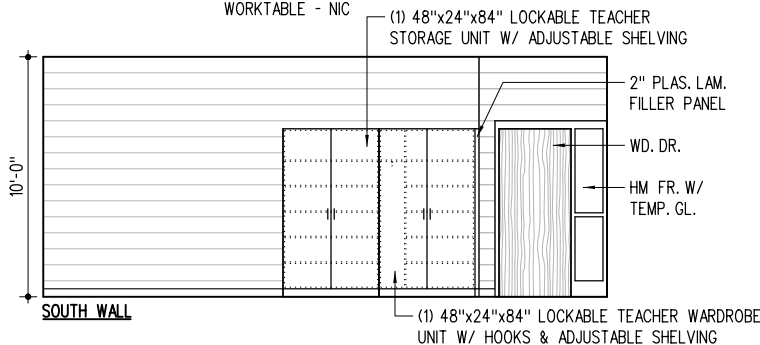
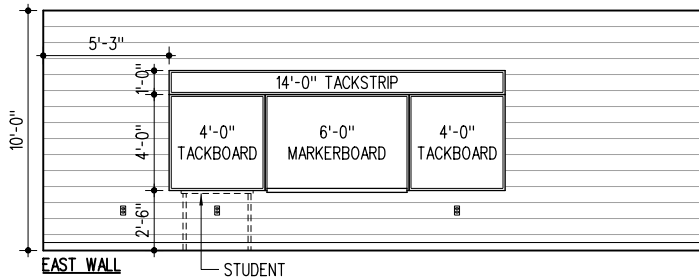
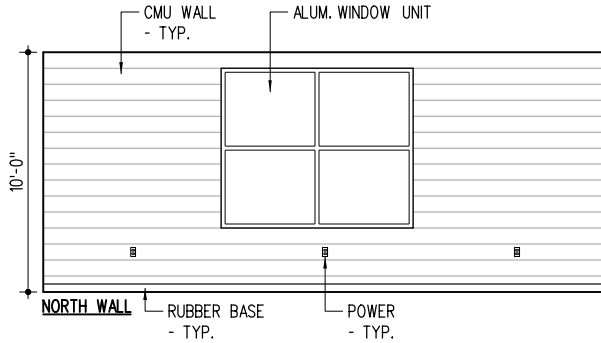
1/8" = 1'-0"

0 2 4 8 16 24



3-3.01

1st Grade Sp. Ed. Classroom

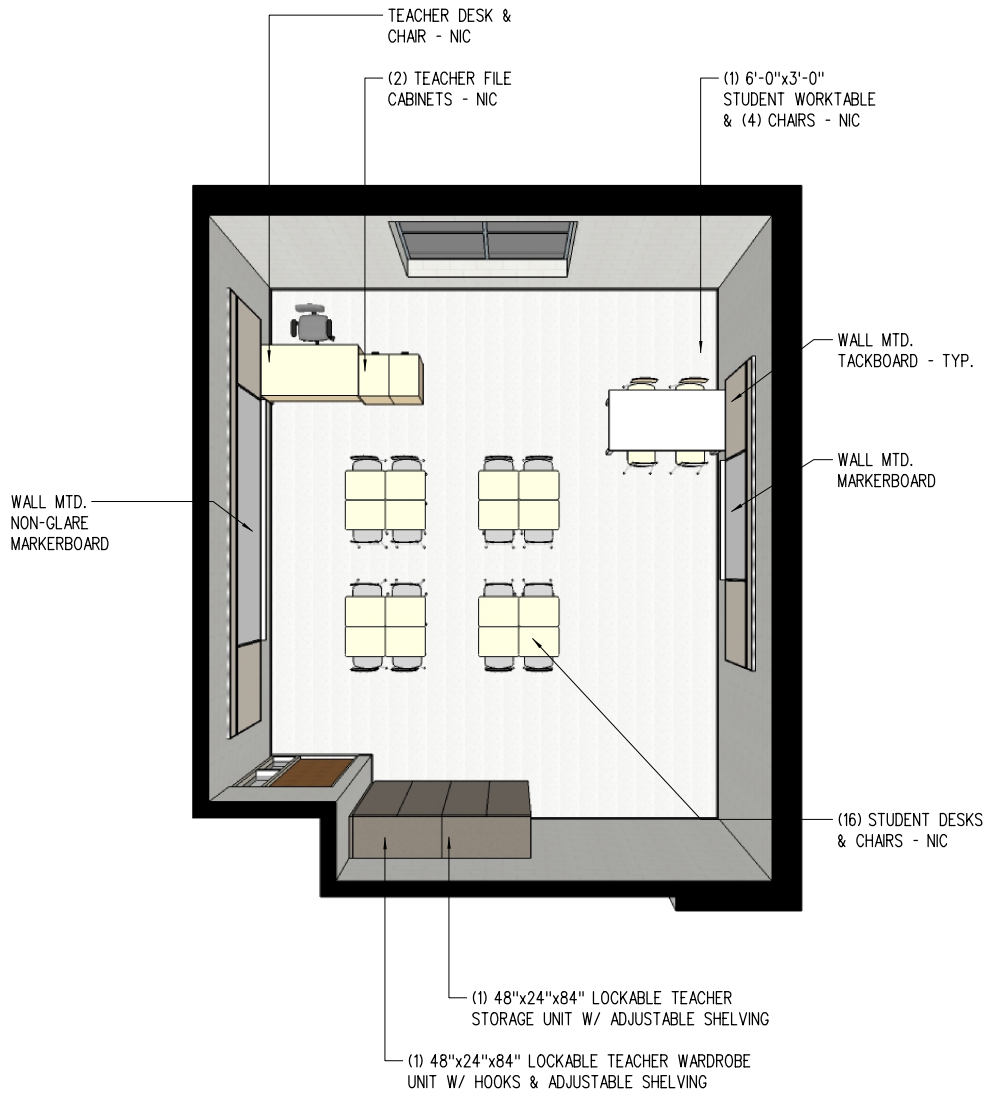


INTERIOR ELEVATIONS

1/8" = 1'-0" 0 2 4 8 16 24

3-3.02

1st Grade Sp. Ed. Classroom



PERSPECTIVE

NS

3-3.03

2nd Grade Sp. Ed. Classroom

	Unit Area (NSF)	Qty	Total Area (NSF)
Actual	754	1	754

Design Occupancy

1 Instructor + 16 Students

Typical Room Dimensions (Feet)

26.9 x **28.0**

Built-In Casework

- 1 48"x24"x84" Lockable Teacher wardrobe unit w/ hooks and adjustable shelves
- 1 48"x24"x84" Lockable Teacher storage unit w/ adjustable shelves

Room Finishes

Ceiling	2'x2' AC.T.
Walls	Painted CMU
Casework	Plastic Laminate
Horizontal Surfaces	Plastic Laminate
Floor	VCT
Floor Base	Rubber

Visual Display

- 12 Non-Glare Markerboard (in linear feet) - Main Teaching Space
- 4 Tackboard (in linear feet) - Main Teaching Space
- 4 Tackboard (in linear feet) - Main Teaching Space
- 6 Markerboard (in linear feet) - Accessory Teaching Space
- 4 Tackboard (in linear feet) - Accessory Teaching Space
- 4 Tackboard (in linear feet) - Accessory Teaching Space
- 20 12" Tackstrip (in linear feet) - Main Teaching Space
- 14 12" Tackstrip (in linear feet) - Accessory Teaching Space

Furniture and Equipment (Not in Contract)

- Student desks and chairs
- 1 6'-0"x3'-0" Student Worktable with (4) Chairs (NIC)
- Teacher desk and chair
- 2 2-drawer teacher file cabinets
- Pencil Sharpener

Technology

- 1 Ceiling Mounted Data Projector (NIC) - Power and Data Outlets Provided
- 1 Teacher Computer and Printer (NIC) - Power and Data Outlets Provided
- 1 Data and Auxiliary Connections to Teacher Station
- 1 Telephone (NIC) - Outlet Provided

Plumbing, Mechanical and Electrical Systems

- Electrical outlets conveniently located
- Analog Clock
- Ceiling Mounted Speaker

Lighting

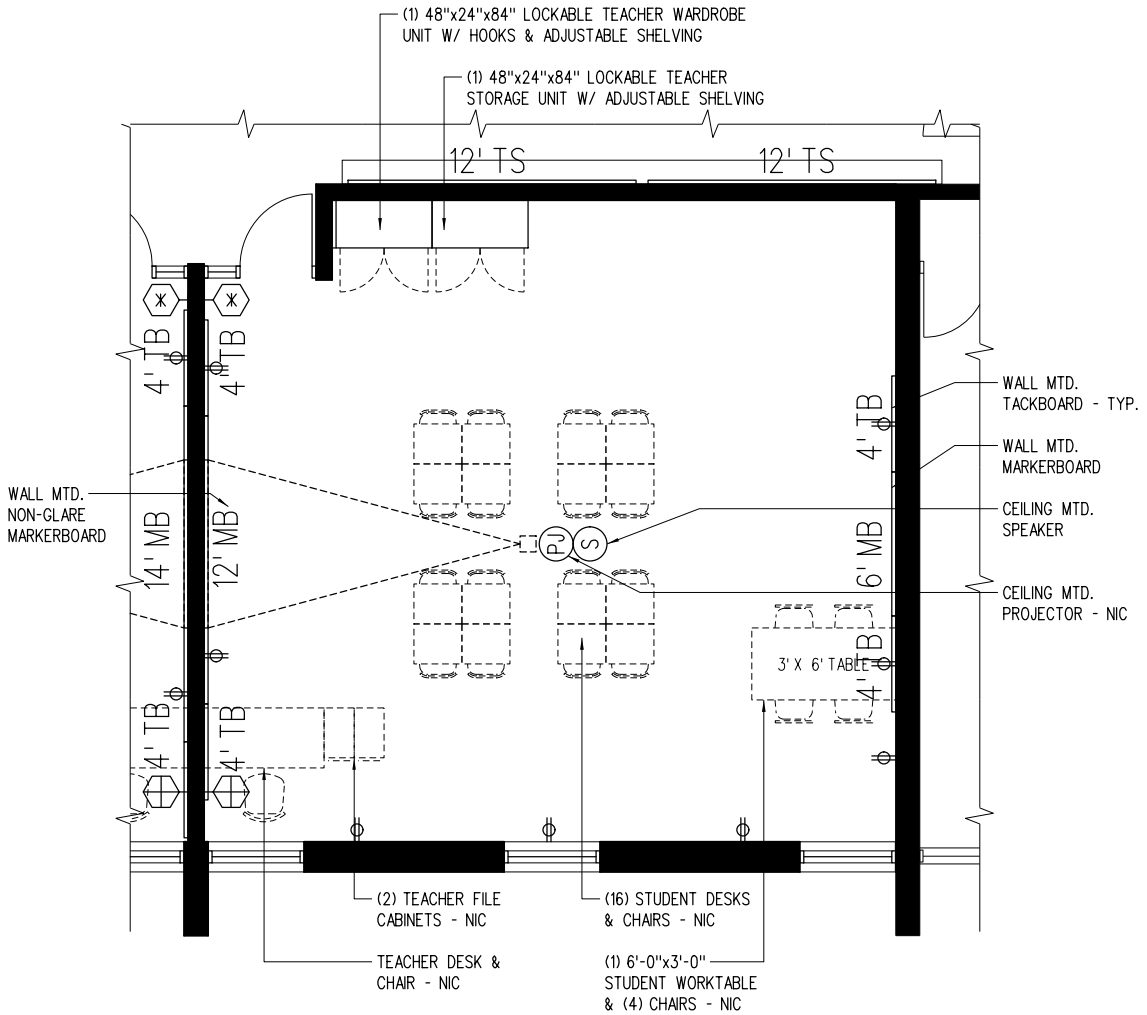
- Access to Natural Daylight (Windows)
- Fluorescent Lighting
- Dual Level Light Switches

Other Considerations

Notes:

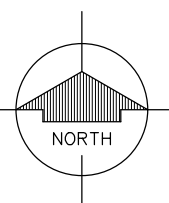
3-4.00

2nd Grade Sp. Ed. Classroom



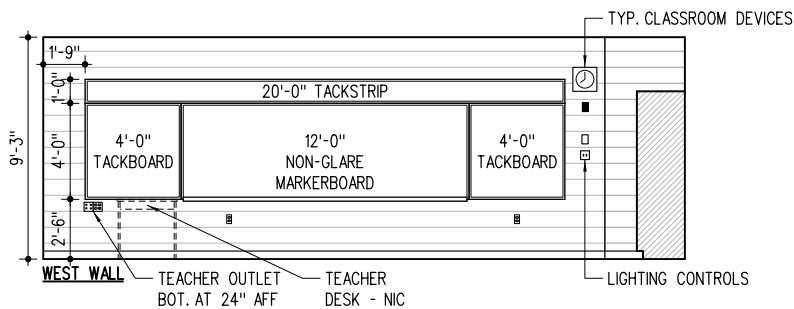
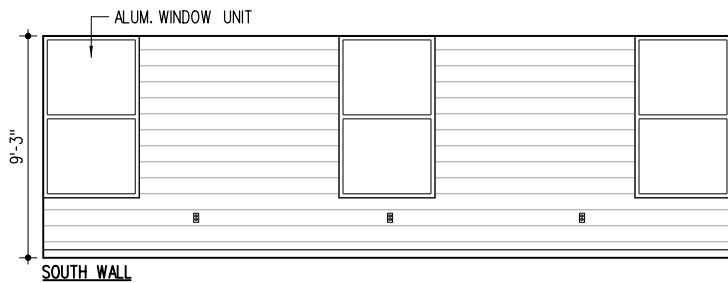
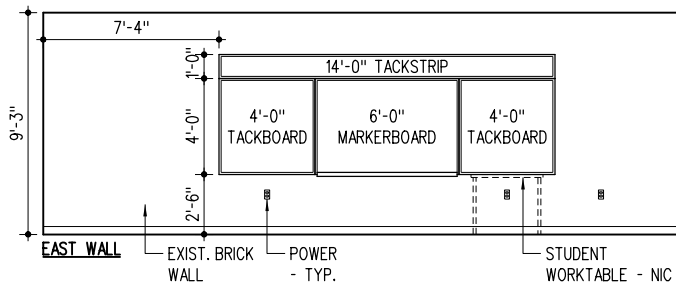
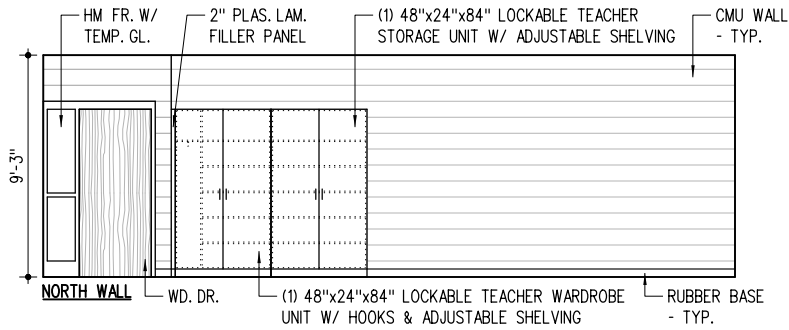
FLOOR PLAN

1/8" = 1'-0"



3-4.01

2nd Grade Sp. Ed. Classroom

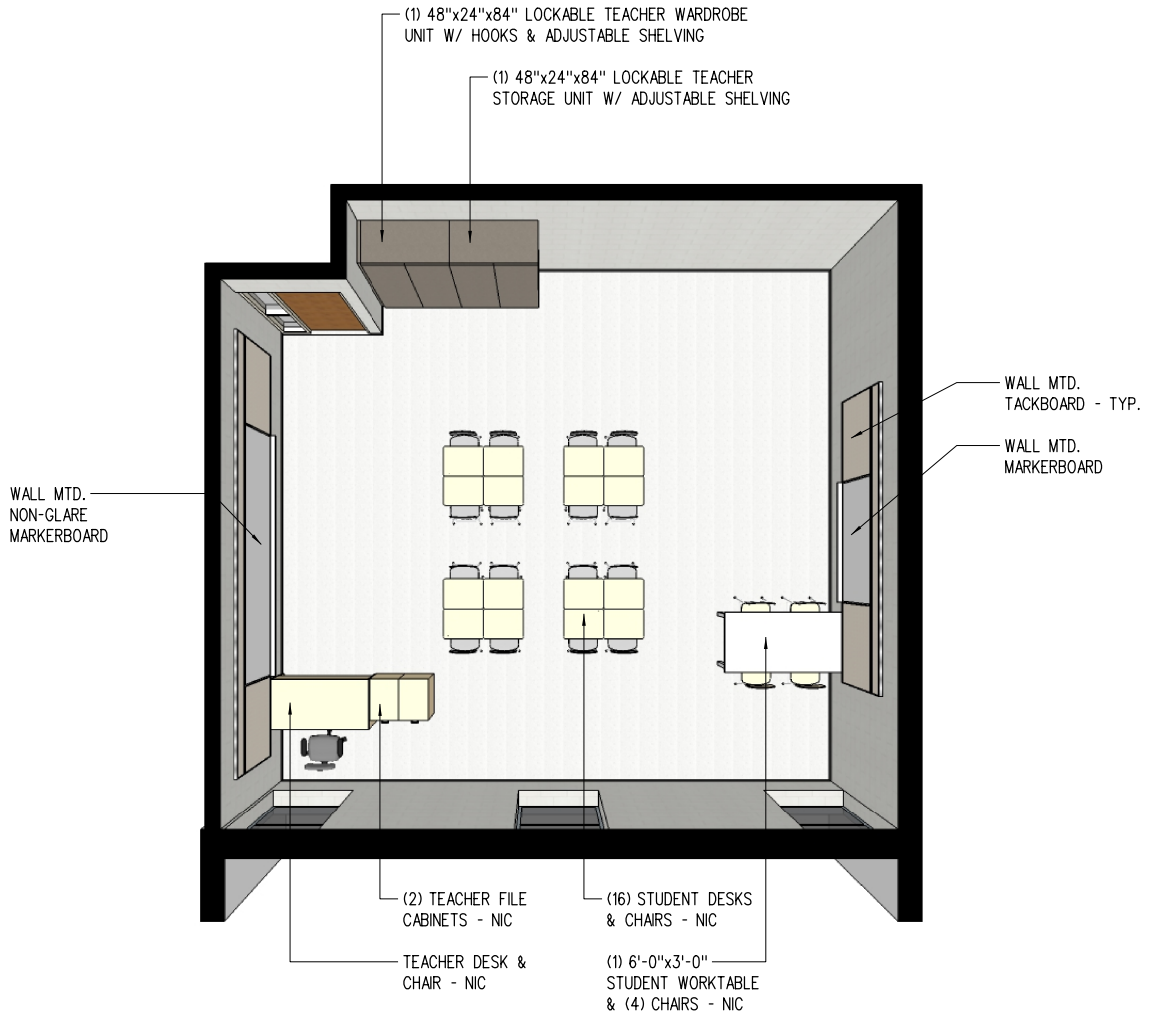


INTERIOR ELEVATIONS

1/8" = 1'-0" 0 2 4 8 16 24

3-4.02

2nd Grade Sp. Ed. Classroom



PERSPECTIVE

NS

3-4.03

3rd Grade Sp. Ed. Classroom (Existing)

	Unit Area (NSF)	Qty	Total Area (NSF)
Actual	592	1	592

Design Occupancy

1 Instructor + 16 Students

Typical Room Dimensions (Feet)

27.0 x **21.9**

Built-In Casework

- 1 48"x24"x84" Lockable Teacher wardrobe unit w/ hooks and adjustable shelves
- 1 48"x24"x84" Lockable Teacher storage unit w/ adjustable shelves

Visual Display

- 12 Non-Glare Markerboard (in linear feet) - Main Teaching Space
- 4 Tackboard (in linear feet) - Main Teaching Space
- 4 Tackboard (in linear feet) - Main Teaching Space
- 6 Markerboard (in linear feet) - Accessory Teaching Space
- 4 Tackboard (in linear feet) - Accessory Teaching Space
- 4 Tackboard (in linear feet) - Accessory Teaching Space
- 20 12" Tackstrip (in linear feet) - Main Teaching Space
- 14 12" Tackstrip (in linear feet) - Main Teaching Space

Furniture and Equipment (Not in Contract)

- Student desks and chairs
- 1 6'-0"x3'-0" Student Worktable with (4) Chairs (NIC)
- Teacher desk and chair
- 2 2-drawer teacher file cabinets
- Pencil Sharpener

Technology

- 1 Ceiling Mounted Data Projector (NIC) - Power and Data Outlets Provided
- 1 Teacher Computer and Printer (NIC) - Power and Data Outlets Provided
- 1 Data and Auxiliary Connections to Teacher Station
- 1 Telephone (NIC) - Outlet Provided

Plumbing, Mechanical and Electrical Systems

Existing outlets in existing walls and new electrical outlets conveniently located in new wall
 Analog Clock
 Ceiling Mounted Speaker

Lighting

Access to Natural Daylight (Windows)
 Modify existing fluorescent lighting and ceiling grid
 Dual Level Light Switches

Other Considerations

Room Finishes

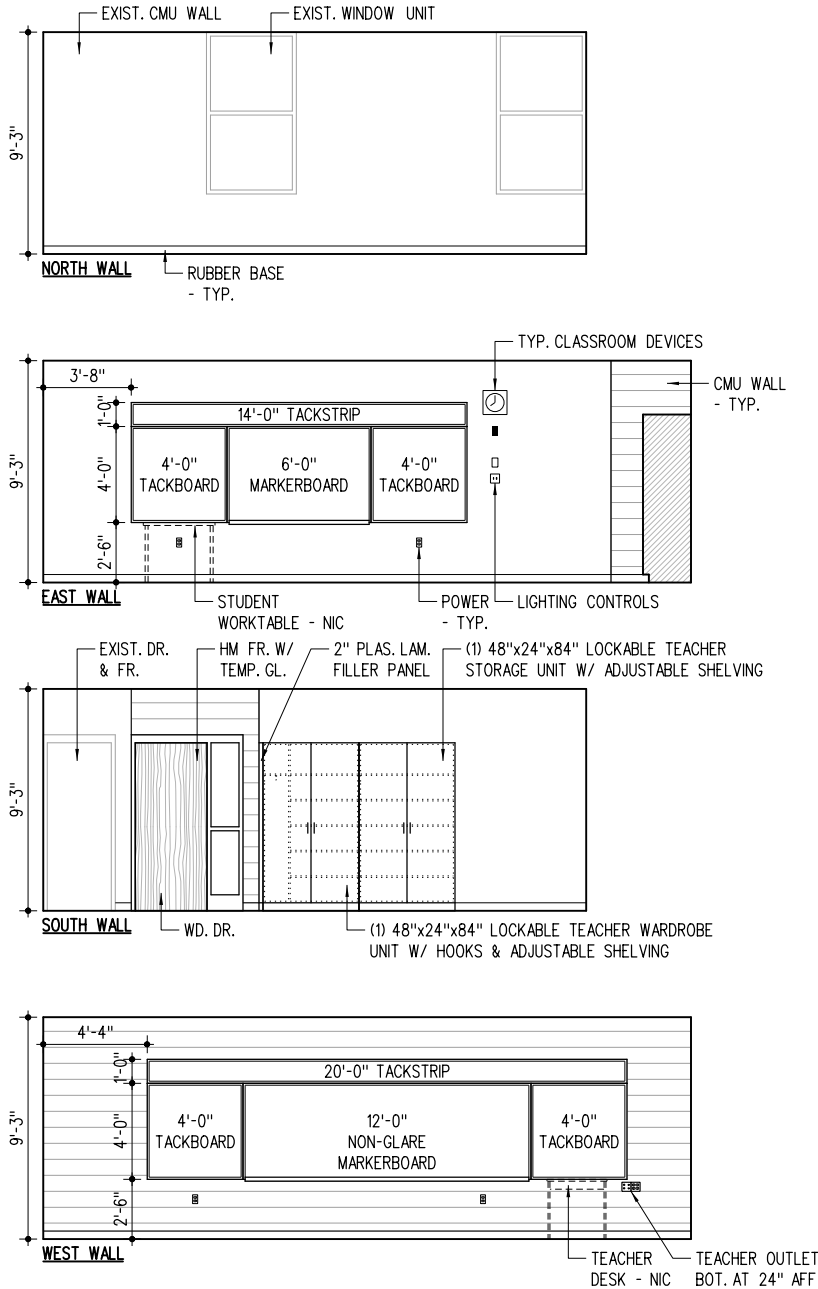
Ceiling	Modify Existing
Walls	Painted CMU
Casework	Plastic Laminate
Horizontal Surfaces	Plastic Laminate
Floor	VCT
Floor Base	Rubber

Notes:

Located in portion of existing classroom. Modify existing ceiling grid and lighting to accommodate the new space.

3-5.00

3rd Grade Sp. Ed. Classroom (Existing)

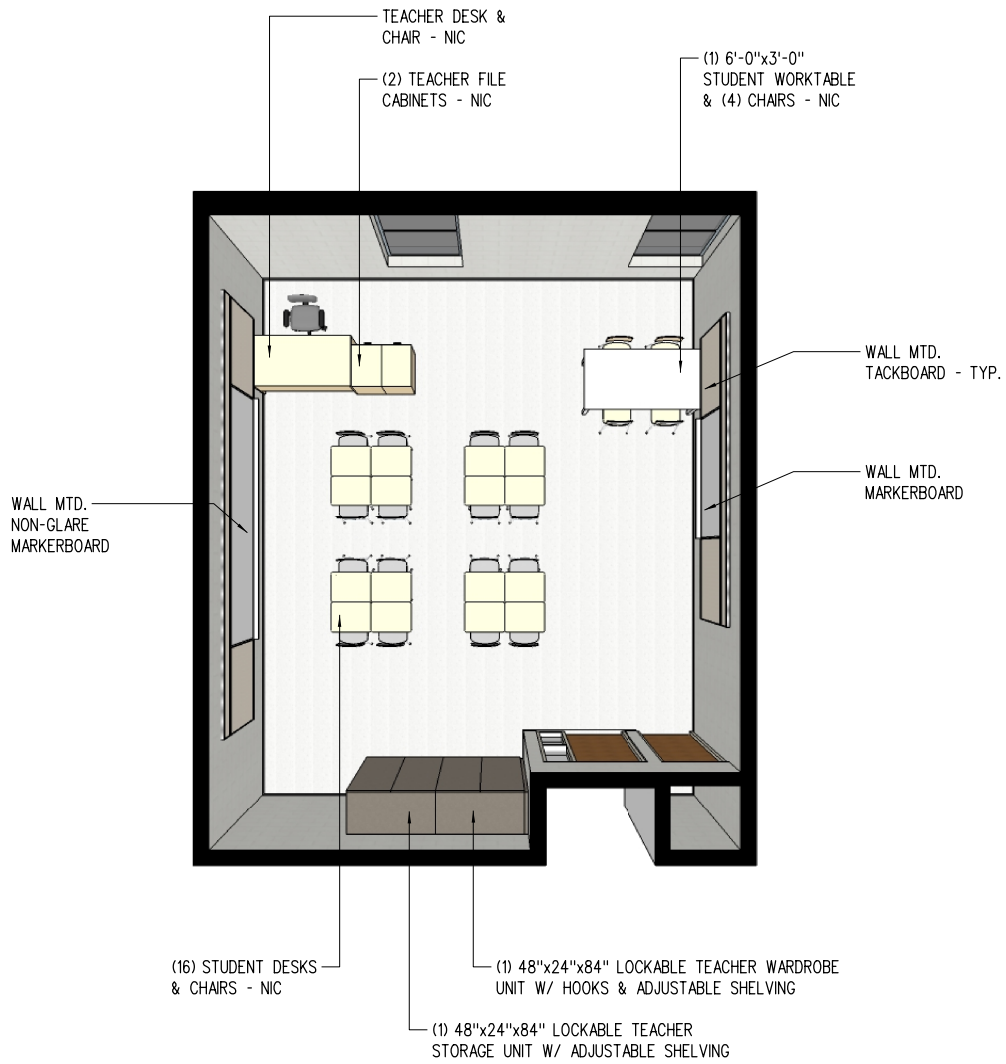


INTERIOR ELEVATIONS

1/8" = 1'-0" 0 2 4 8 16 24

3-5.02

3rd Grade Sp. Ed. Classroom (Existing)



PERSPECTIVE

NS

3-5.03