



PERU ELEMENTARY SCHOOL DISTRICT 124

Peru, LaSalle County, Illinois

Addition and Renovation Northview Elementary School Design Development Manual

Healy | Bender Project No. 10-3113-145

Tab 3: Sheet 3-7.00 through Sheet 3-13.03

April 18, 2014



Reading Recovery-A

	Unit Area (NSF)	Qty	Total Area (NSF)
Actual	307	1	307

Design Occupancy

1 Instructor + 5 Students

Typical Room Dimensions (Feet)

16.0 x 19.2

Built-In Casework

- 1 Plas. lam. countertop (30"Ht) w/ 4" plas. lam. backsplash, on open plas. lam. base cabinets (12"D) w/ adjustable shelves
- 1 Plas. lam. countertop (34"Ht) w/ 4" plas. lam. backsplash, on lockable plas. lam. base cabinets (24"D) w/ lockable plas. lam. wall cabinets (12"D) & adjustable shelves
- 1 48"x24"x84" Lockable plas. lam. teacher wardrobe unit w/ hooks & adjustable shelves

Room Finishes

Ceiling	2'x2' AC.T.
Walls	Painted CMU
Casework	Plastic Laminate
Horizontal Surfaces	Plastic Laminate
Floor	VCT
Floor Base	Rubber

Visual Display

- 6 Markerboard (in linear feet) - Main Teaching Space
- 4 Tackboard (in linear feet) - Main Teaching Space
- 4 Tackboard (in linear feet) - Main Teaching Space
- 4 Tackboard (in linear feet) - Accessory Teaching Space
- 4 Tackboard (in linear feet) - Accessory Teaching Space
- 14 12" Tackboard (in linear feet) - Main Teaching Space

Notes:

Furniture and Equipment (Not in Contract)

- Teacher desk and chair
- 1 Student worktable and chairs
- 1 2-drawer teacher file cabinet
- 1 Kidney shaped table with teacher chair and 5 student chairs
- Pencil Sharpener

Technology

- 1 Power, Data and Auxiliary Connections to Teacher Station
- 1 Telephone (NIC) - Outlet Provided
- 1 Student Outlet at computer table

Plumbing, Mechanical and Electrical Systems

- Electrical outlets conveniently located
- Analog Clock
- Ceiling Mounted Speaker

Lighting

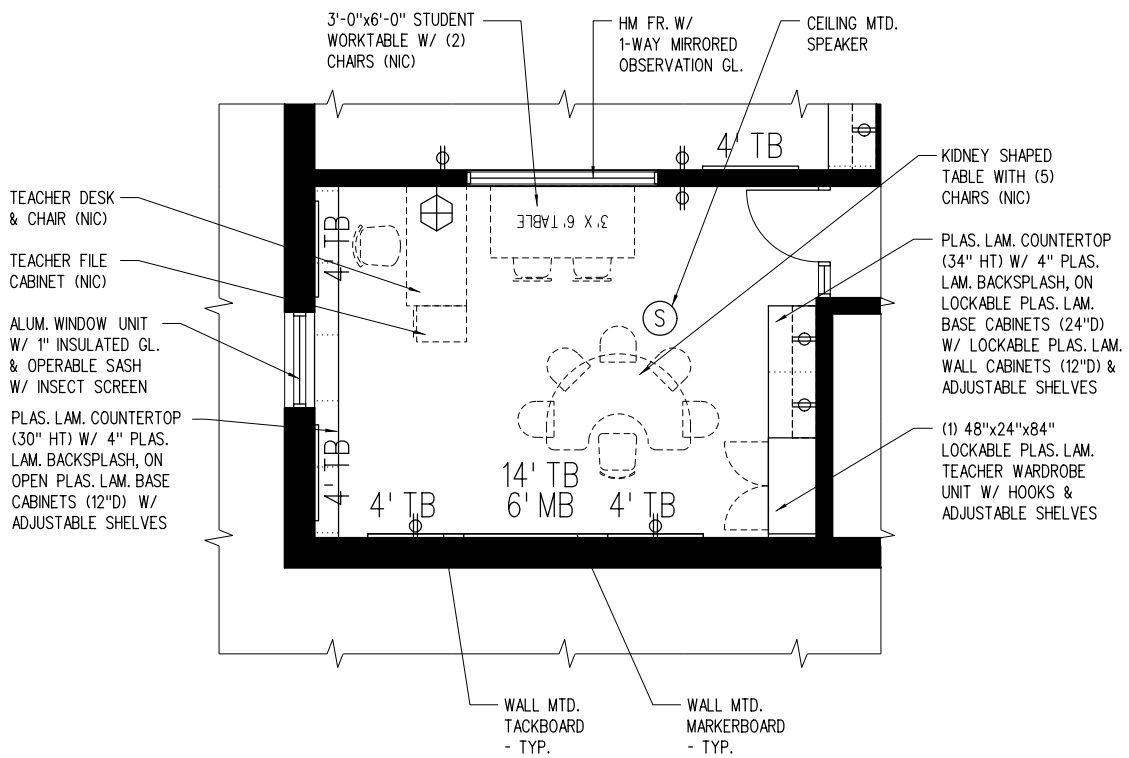
- Access to Natural Daylight (Windows)
- Fluorescent Lighting
- Dual Level Light Switches
- Lighting to be arranged and switched for proper operation of observation window

Other Considerations

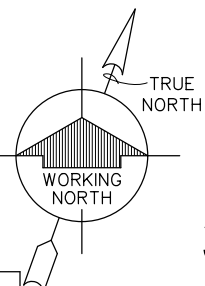
- 1 Hollow metal frame with 1-way observation glass in-wall between Reading Recovery-A and adjacent Team Center-A / Observation Room darkening shades (NIC)

3-7.00

Reading Recovery-A

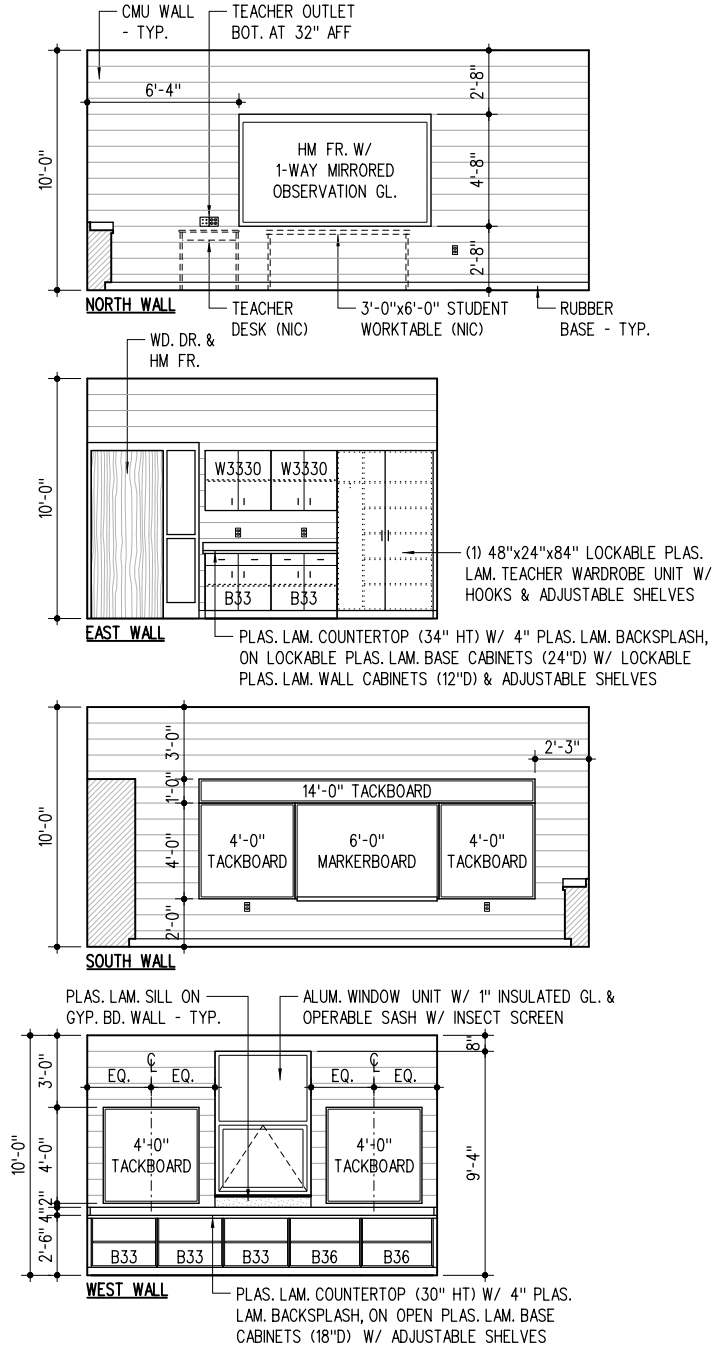


FLOOR PLAN



3-7.01

Reading Recovery-A

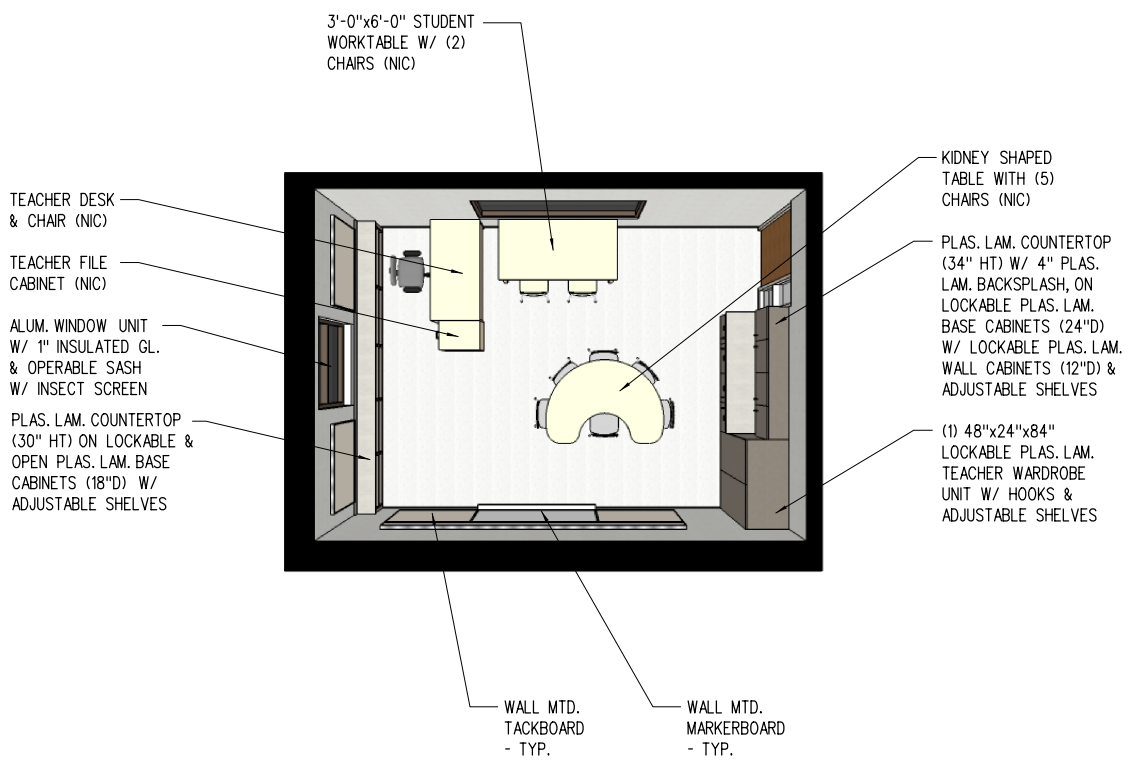


INTERIOR ELEVATIONS



3-7.02

Reading Recovery-A



PERSPECTIVE

NS

3-7.03

Reading Recovery-B

	Unit Area (NSF)	Qty	Total Area (NSF)
Actual	307	1	307

Design Occupancy

1 Instructor + 5 Students

Typical Room Dimensions (Feet)

19.3 x 15.9

Built-In Casework

- 1 Plas. lam. countertop (30"Ht) w/ 4" plas. lam. backsplash, on open plas. lam. base cabinets (12"D) w/ adjustable shelves
- 1 Plas. lam. countertop (34"Ht) w/ 4" plas. lam. backsplash, on lockable plas. lam. base cabinets (24"D) w/ lockable plas. lam. wall cabinets (12"D) & adjustable shelves
- 1 48"x24"x84" Lockable plas. lam. teacher wardrobe unit w/ hooks & adjustable shelves

Room Finishes

Ceiling	2'x2' AC.T.
Walls	Painted CMU
Casework	Plastic Laminate
Horizontal Surfaces	Plastic Laminate
Floor	VCT
Floor Base	Rubber

Visual Display

- 6 Markerboard (in linear feet) - Main Teaching Space
- 8 Markerboard (in linear feet) - Accessory Teaching Space
- 4 Tackboard (in linear feet) - Main Teaching Space
- 4 Tackboard (in linear feet) - Main Teaching Space
- 4 Tackboard (in linear feet) - Accessory Teaching Space
- 4 Tackboard (in linear feet) - Accessory Teaching Space
- 14 12" Tackboard (in linear feet) - Accessory Teaching Space

Furniture and Equipment (Not in Contract)

- Teacher desk and chair
- 1 Student worktable and chairs
- 1 2-drawer teacher file cabinet
- 1 Kidney shaped table with teacher chair and 5 student chairs
- Pencil Sharpener

Technology

- 1 Power, Data and Auxiliary Connections to Teacher Station
- 1 Telephone (NIC) - Outlet Provided
- 1 Student Outlet at computer table

Plumbing, Mechanical and Electrical Systems

- Electrical outlets conveniently located
- Analog Clock
- Ceiling Mounted Speaker

Lighting

- Access to Natural Daylight (Windows)
- Fluorescent Lighting
- Dual Level Light Switches

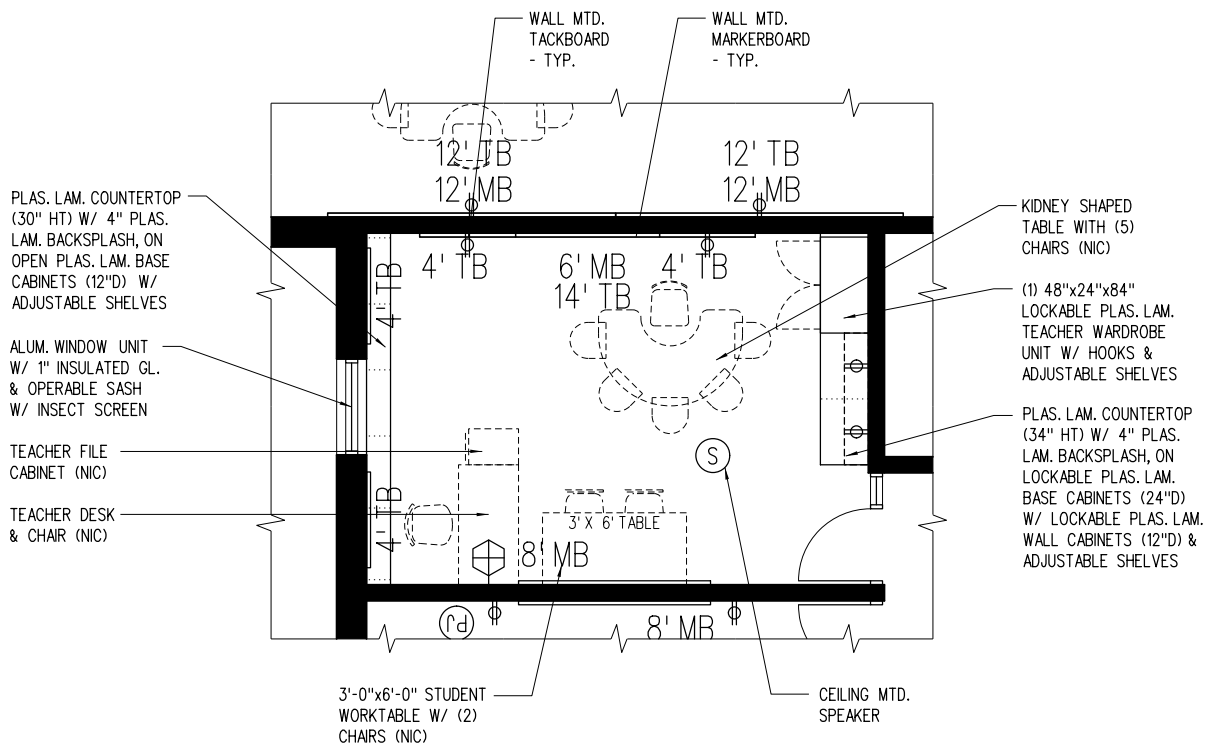
Other Considerations

- Room darkening shades (NIC)

Notes:

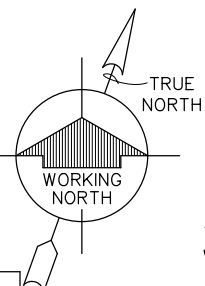
3-8.00

Reading Recovery-B



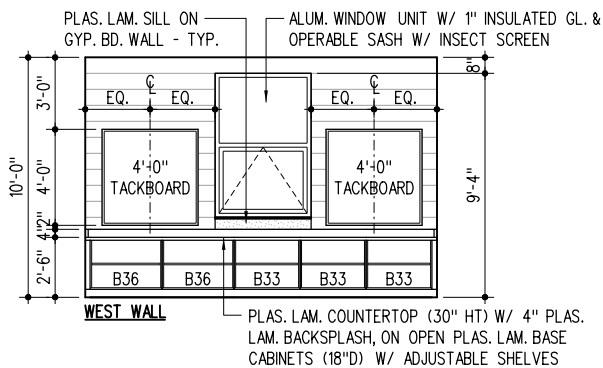
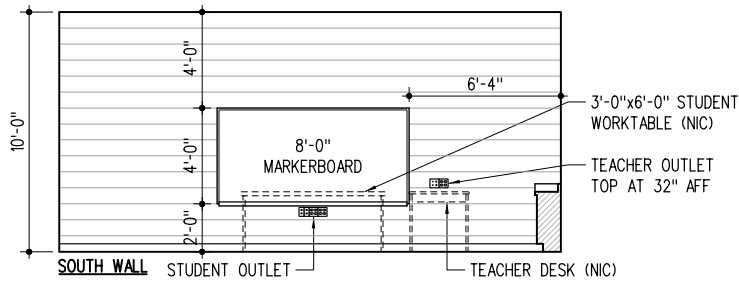
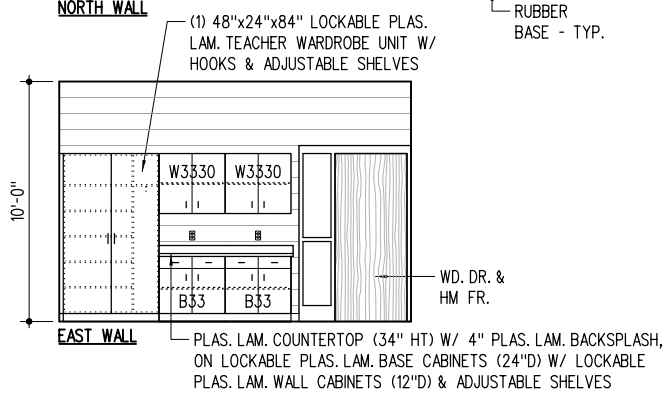
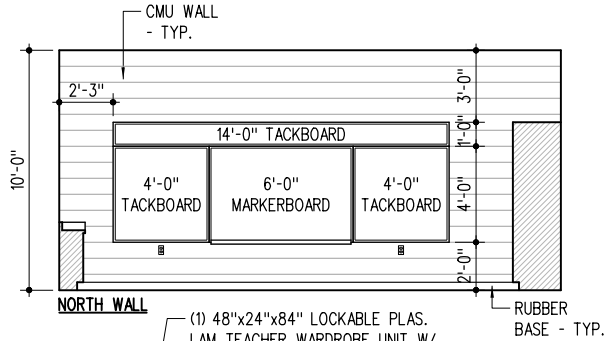
FLOOR PLAN

1/8" = 1'-0"



3-8.01

Reading Recovery-B

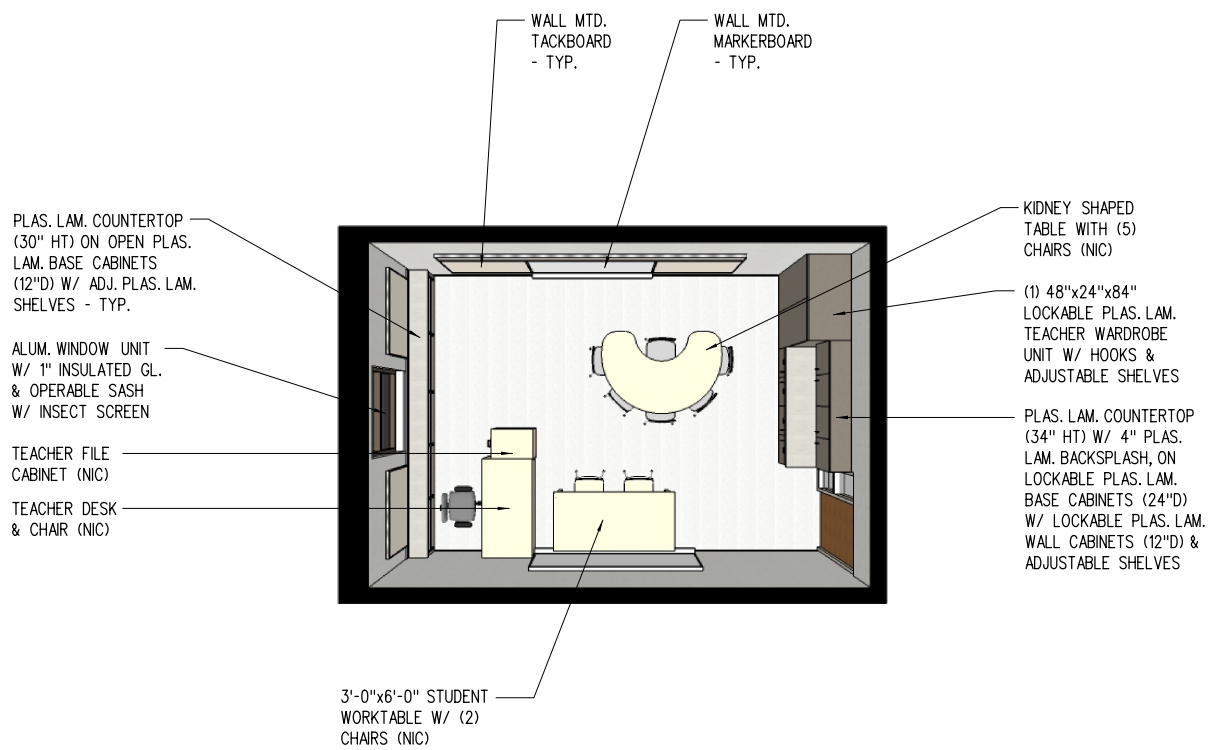


INTERIOR ELEVATIONS

1/8" = 1'-0" 0 2 4 8 16 24

3-8.02

Reading Recovery-B



PERSPECTIVE

NS

3-8.03

Reading-A (Existing)

	Unit Area (NSF)	Qty	Total Area (NSF)
Actual	268	1	268

Design Occupancy

1 Instructor + 4-5 Students

Typical Room Dimensions (Feet)

13.0 x **20.6**

Built-In Casework

- 1 Plas. lam. countertop (30"Ht) w/ 4" plas. lam. backsplash, on open plas. lam. base cabinets (18"D) w/ adjustable shelves

Visual Display

- 6 Markerboard (in linear feet) - Main Teaching Space
- 6 Markerboard (in linear feet) - Accessory Teaching Space
- 4 Tackboard (in linear feet) - Main Teaching Space
- 4 Tackboard (in linear feet) - Accessory Teaching Space
- 6 Tackboard (in linear feet) - Accessory Teaching Space
- 10 12" Tackboard (in linear feet) - Main Teaching Space

Furniture and Equipment (Not in Contract)

- 1 Student worktable and chairs
- Teacher desk and chair
- 1 2-drawer teacher file cabinet
- 1 Student computer table with 2 chairs
- 1 Kidney shaped table with teacher chair and 5 student chairs
- Pencil Sharpener

Technology

- 1 Wall Mounted 65"Wx49"H Smartboard at main teaching space
- 1 Power, Data and Auxiliary Connections to Teacher Station
- 1 Telephone (NIC) - Outlet Provided
- 1 Student Outlet at computer table

Plumbing, Mechanical and Electrical Systems

Electrical outlets conveniently located
 Analog Clock
 Ceiling Mounted Speaker
 Unit ventilator at perimeter wall - built-in to new casework

Lighting

Access to Natural Daylight (Windows)
 Fluorescent Lighting
 Dual Level Light Switches

Other Considerations

(2) Existing wood wardrobe units and (1) bookshelf to remain

Room Finishes

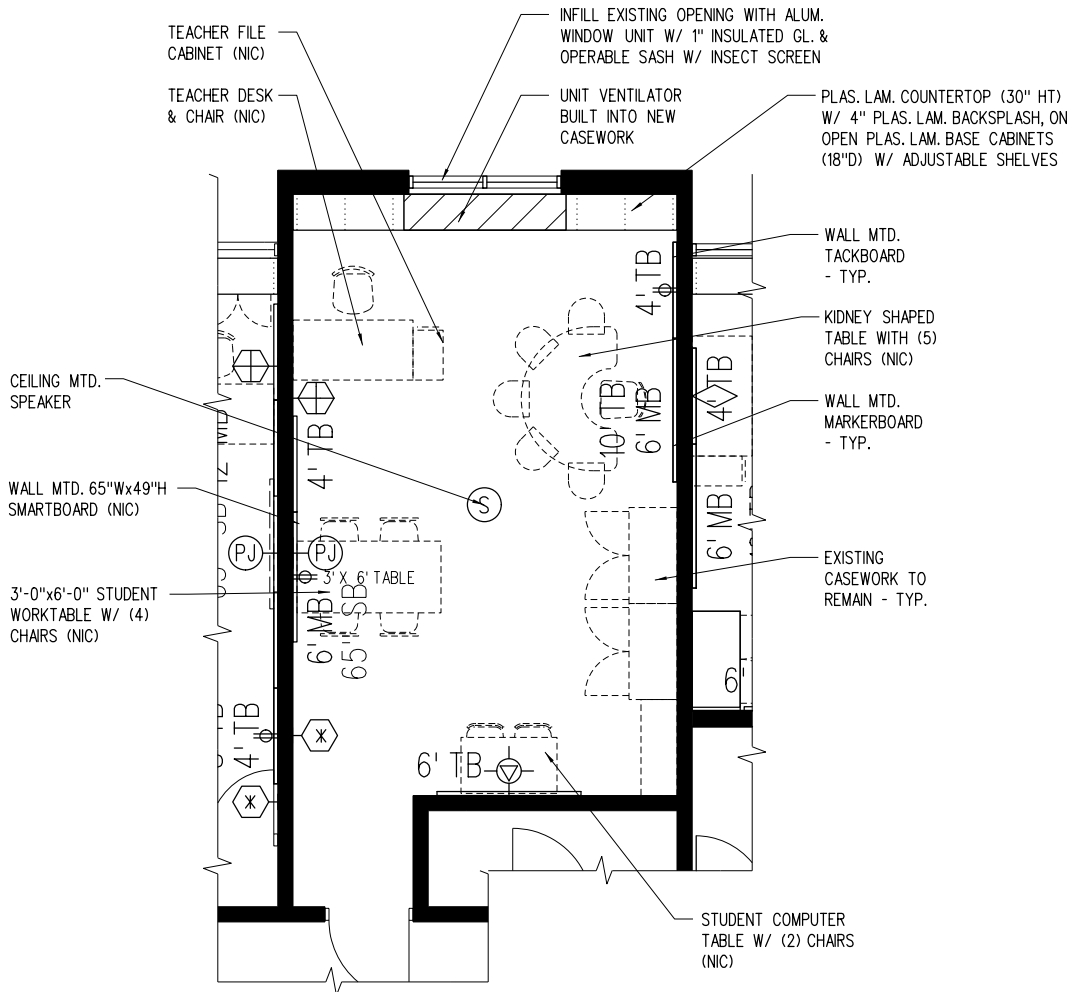
Ceiling	Modify Existing
Walls	Painted CMU
Casework	Plastic Laminate
Horizontal Surfaces	Plastic Laminate
Floor	VCT
Floor Base	Rubber

Notes:

Existing door opening to be infilled with aluminum window unit w/ 1" insulated glass.

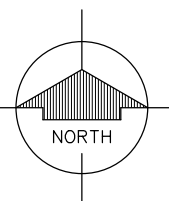
3-9.00

Reading-A (Existing)



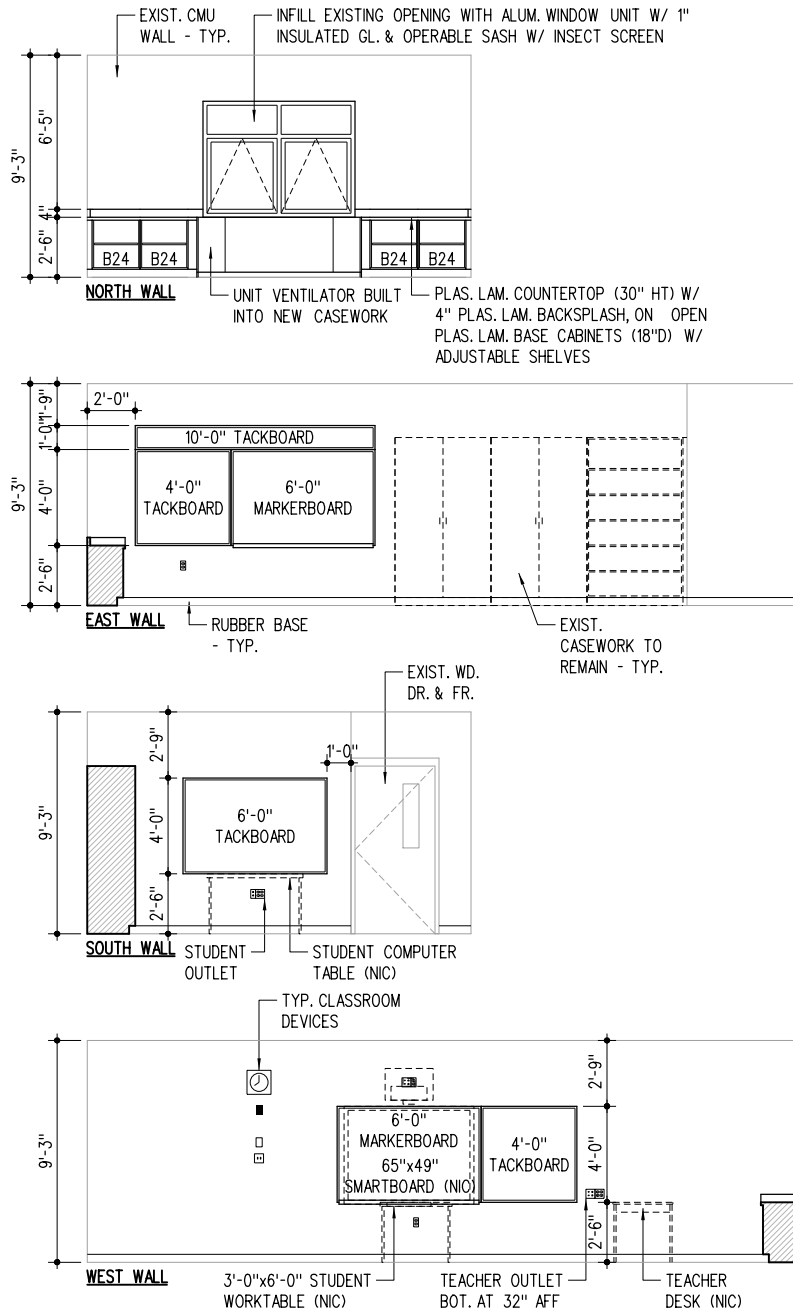
FLOOR PLAN

1/8" = 1'-0" 0 2 4 8 16 24



3-9.01

Reading-A (Existing)

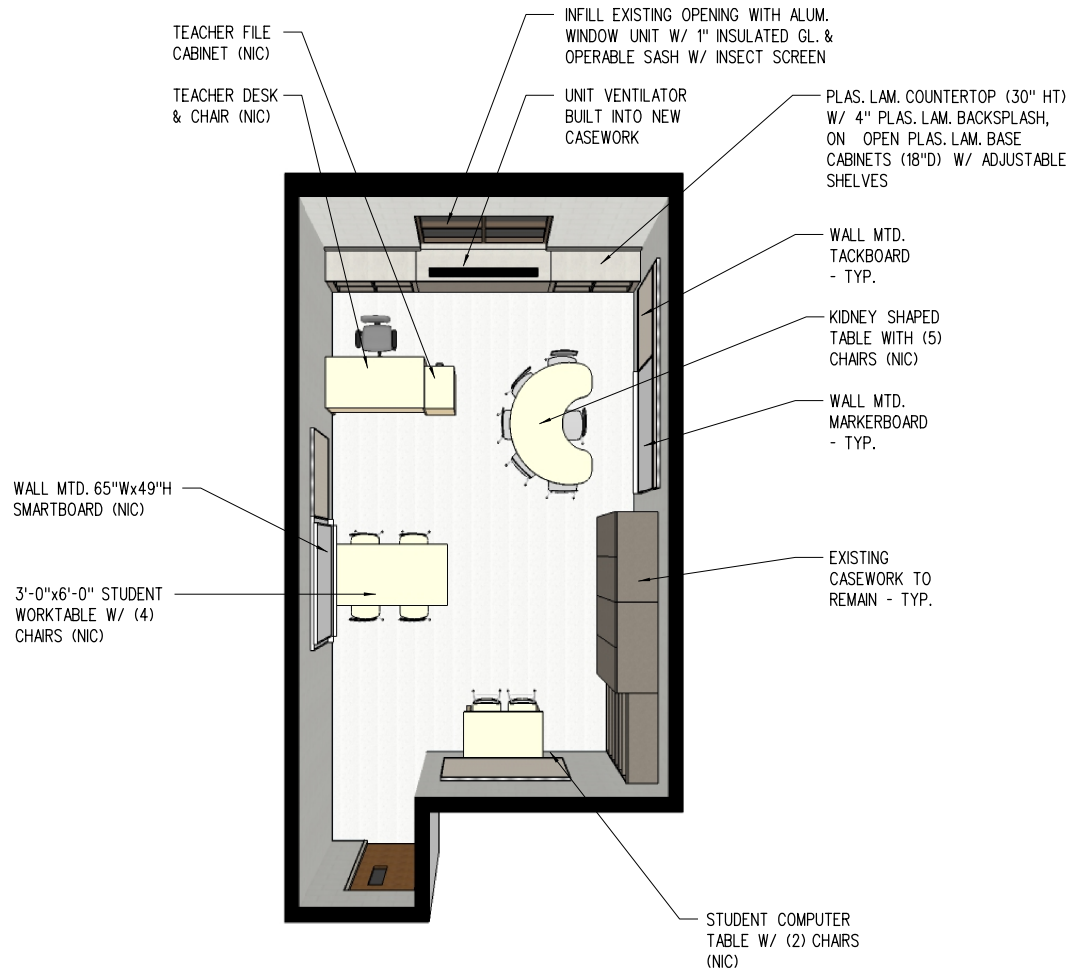


INTERIOR ELEVATIONS



3-9.02

Reading-A (Existing)



PERSPECTIVE

NS

3-9.03

Reading-B (Existing)

	Unit Area (NSF)	Qty	Total Area (NSF)
Actual	424	1	424

Design Occupancy

1 Instructor + 5 Students

Typical Room Dimensions (Feet)

16.0 x 26.5

Built-In Casework

- 1 Plas. lam. countertop (30"Ht) w/ 4" plas. lam. backsplash, on open plas. lam. base cabinets (18"D) w/ adjustable shelves
- 1 48"x24"x84" Lockable plas. lam. teacher wardrobe unit w/ hooks & adjustable shelves

Visual Display

- 6 Markerboard (in linear feet) - Main Teaching Space
- 6 Markerboard (in linear feet) - Accessory Teaching Space
- 4 Tackboard (in linear feet) - Main Teaching Space
- 4 Tackboard (in linear feet) - Main Teaching Space
- 4 Tackboard (in linear feet) - Accessory Teaching Space
- 6 Tackboard (in linear feet) - Accessory Teaching Space
- 14 12" Tackboard (in linear feet) - Main Teaching Space
- 10 12" Tackboard (in linear feet) - Accessory Teaching Space

Furniture and Equipment (Not in Contract)

- Teacher desk and chair
- 1 2-drawer teacher file cabinet
- 1 Student computer table with 2 chairs
- 1 Kidney shaped table with teacher chair and 5 student chairs
- Pencil Sharpener

Technology

- 1 Power, Data and Auxiliary Connections to Teacher Station
- 1 Telephone (NIC) - Outlet Provided
- 1 Student Outlet at computer table

Plumbing, Mechanical and Electrical Systems

- Electrical outlets conveniently located
- Analog Clock
- Ceiling Mounted Speaker
- Unit ventilator at perimeter wall - built-in to new casework

Lighting

- Access to Natural Daylight (Windows)
- Fluorescent Lighting
- Dual Level Light Switches

Other Considerations

Room Finishes

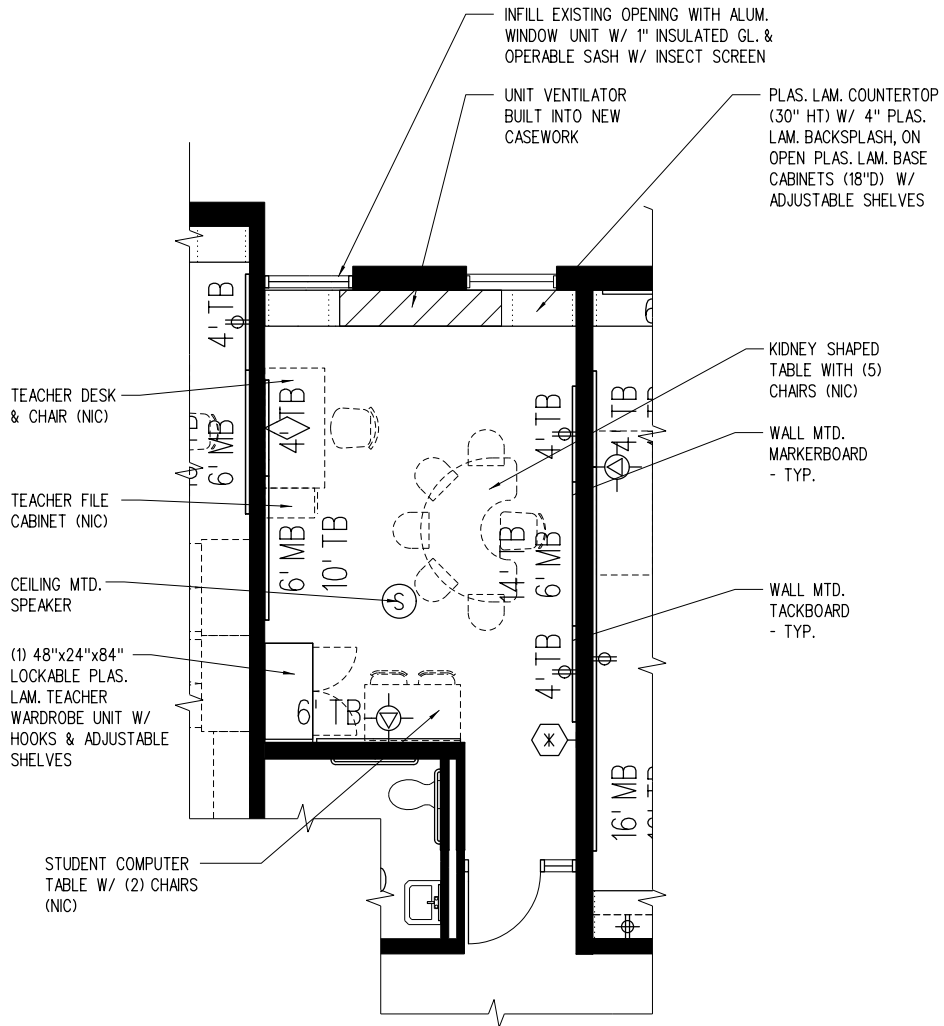
Ceiling	Existing to Remain
Walls	Existing / CMU
Casework	Plastic Laminate
Horizontal Surfaces	Plastic Laminate
Floor	VCT
Floor Base	Rubber

Notes:

Located in portion of existing classroom. Modify existing ceiling grid and lighting to accommodate the new space.

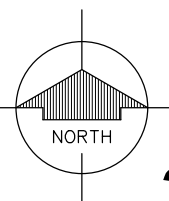
3-10.00

Reading-B (Existing)



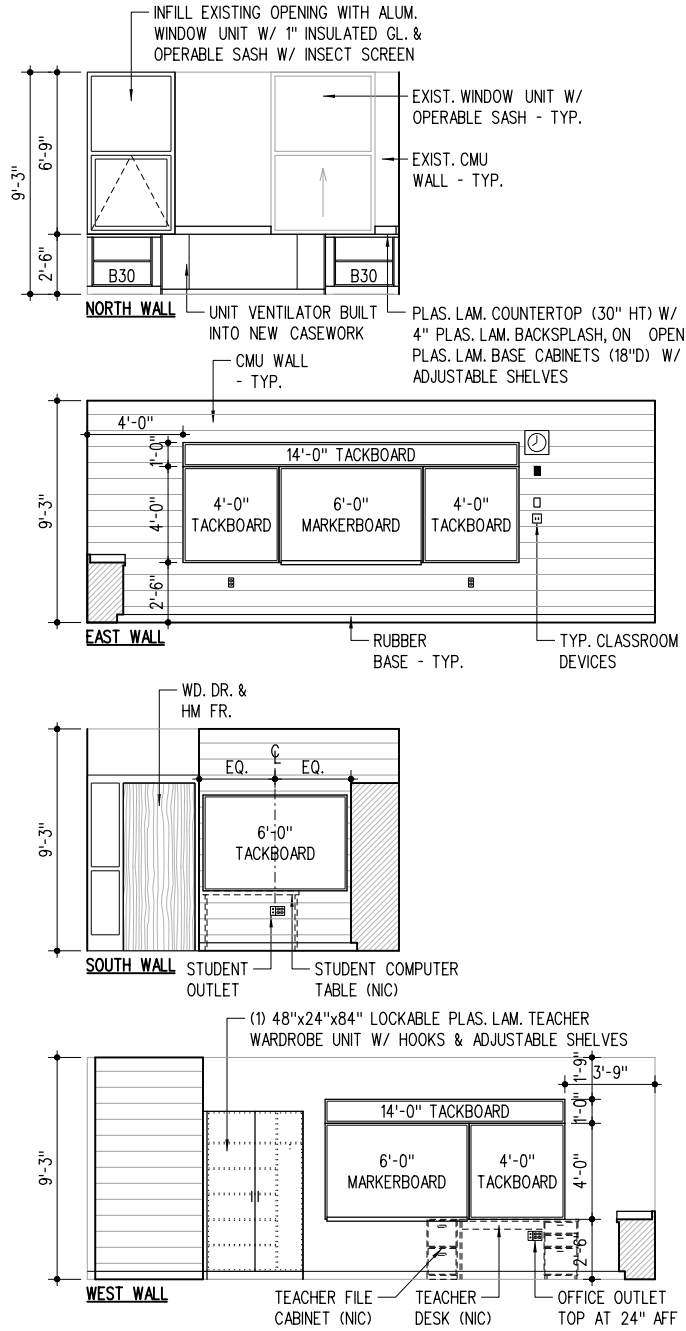
FLOOR PLAN

1/8" = 1'-0"



3-10.01

Reading-B (Existing)

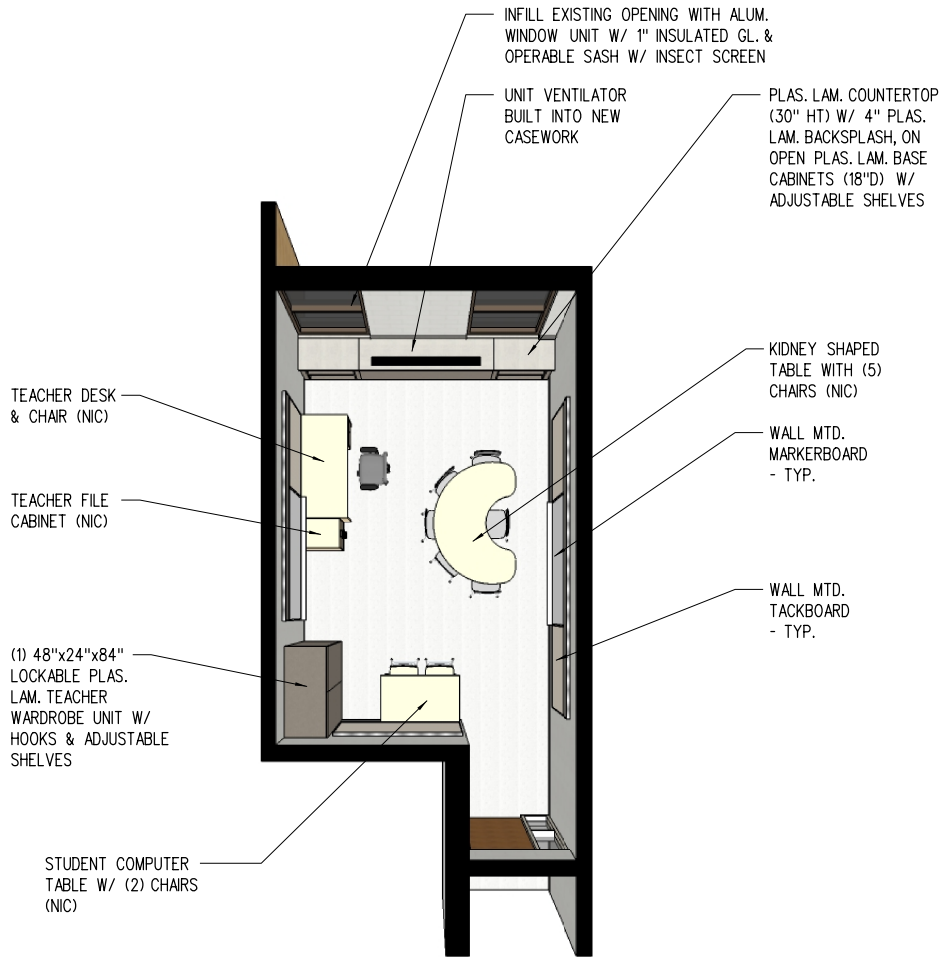


INTERIOR ELEVATIONS



3-10.02

Reading-B (Existing)



PERSPECTIVE

NS

3-10.03

Speech-A

	Unit Area (NSF)	Qty	Total Area (NSF)
Actual	330	1	330

Design Occupancy

1 Instructor + 5 Students

Typical Room Dimensions (Feet)

12.8 x 25.8

Built-In Casework

- 1 Plas. lam. countertop (34"Ht) w/ 4" plas. lam. backsplash, on lockable plas. lam. base cabinets (24"D) w/ adjustable shelves
- 1 48"x24"x84" Lockable plas. lam. teacher wardrobe unit w/ hooks & adjustable shelves
- 1 48"x24"x84" Lockable plas. lam. teacher storage unit w/ adjustable shelves

Visual Display

- 6 Markerboard (in linear feet) - Main Teaching Space
- 6 Tackboard (in linear feet) - Main Teaching Space
- 4 Tackboard (in linear feet) - Accessory Teaching Space
- 6 Tackboard (in linear feet) - Accessory Teaching Space
- 12 12" Tackboard (in linear feet) - Main Teaching Space

Furniture and Equipment (Not in Contract)

- Teacher desk and chair
- 1 2-drawer teacher file cabinet
- 1 Kidney shaped table with teacher chair and 5 student chairs
- Pencil Sharpener

Technology

- 1 Power, Data and Auxiliary Connections to Teacher Station
- 1 Telephone (NIC) - Outlet Provided

Plumbing, Mechanical and Electrical Systems

- Electrical outlets conveniently located
- Analog Clock
- Ceiling Mounted Speaker

Lighting

- Access to Natural Daylight via skylights/solartube
- Fluorescent Lighting
- Dual Level Light Switches

Other Considerations

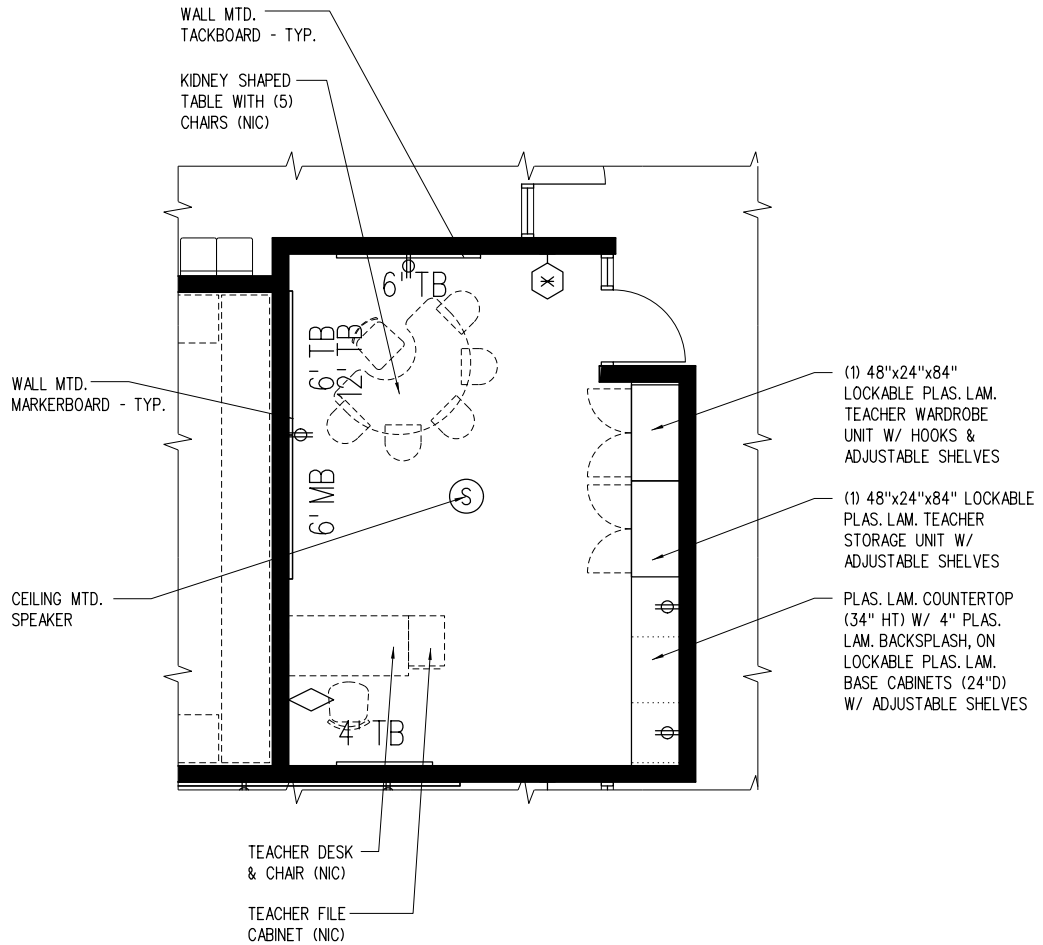
Room Finishes

Ceiling	2'x2' AC.T.
Walls	Painted CMU
Casework	Plastic Laminate
Horizontal Surfaces	Plastic Laminate
Floor	VCT
Floor Base	Rubber

Notes:

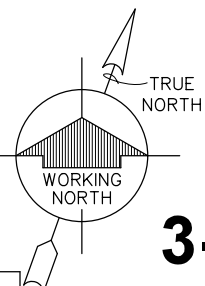
3-11.00

Speech-A



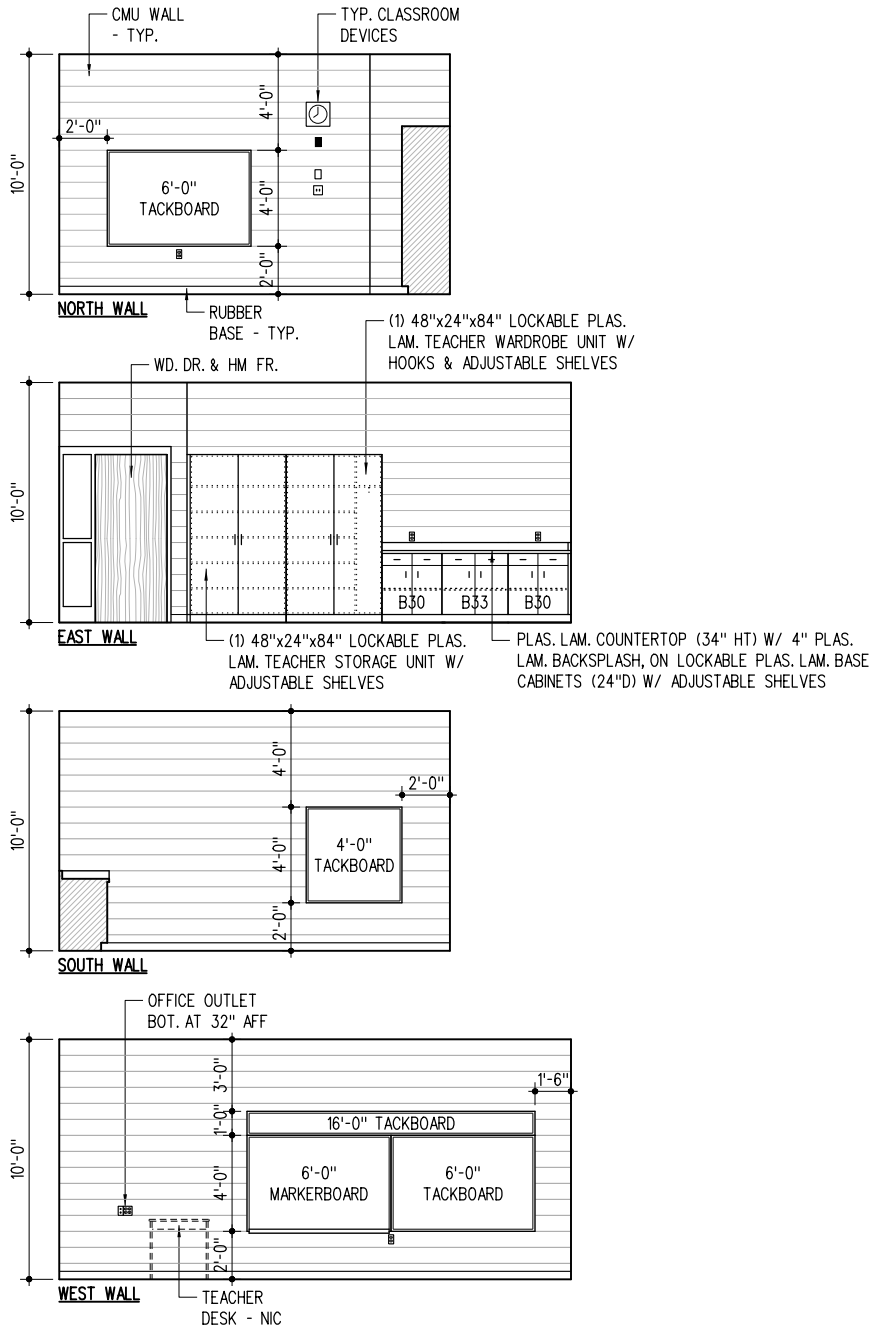
FLOOR PLAN

1/8" = 1'-0"



3-11.01

Speech-A

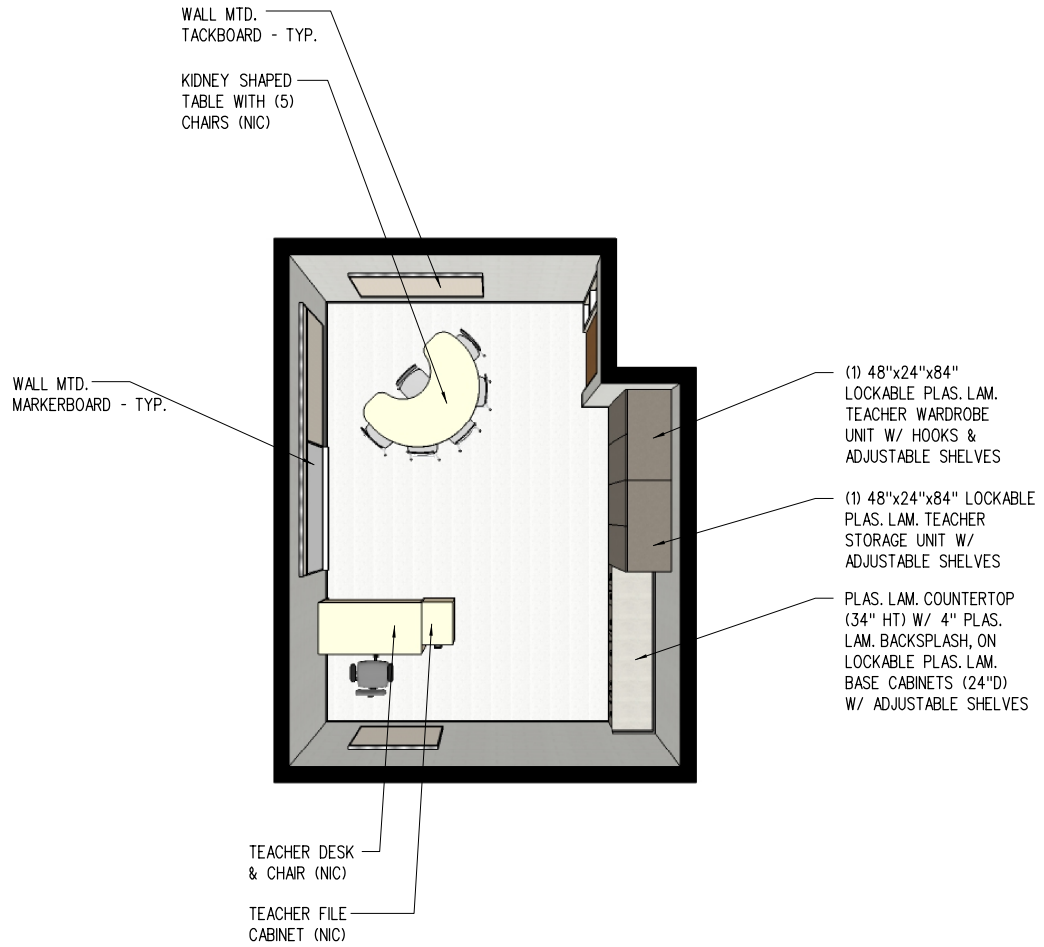


INTERIOR ELEVATIONS



3-11.02

Speech-A



PERSPECTIVE

NS

3-11.03

Speech-B (Existing)

	Unit Area (NSF)	Qty	Total Area (NSF)
Actual	338	1	338

Design Occupancy

1 Instructor + 5 Students

Typical Room Dimensions (Feet)

17.0 x 19.9

Built-In Casework

- 1 48"x24"x84" Lockable plas. lam. teacher wardrobe unit w/ hooks & adjustable shelves
- 1 48"x24"x84" Lockable plas. lam. teacher storage unit w/ adjustable shelves

Visual Display

- 6 Markerboard (in linear feet) - Main Teaching Space
- 6 Tackboard (in linear feet) - Main Teaching Space
- 10 Tackboard (in linear feet) - Accessory Teaching Space
- 12 12" Tackboard (in linear feet) - Main Teaching Space

Furniture and Equipment (Not in Contract)

- Teacher desk and chair
- 1 2-drawer teacher file cabinet
- 1 Kidney shaped table with teacher chair and 5 student chairs
- Pencil Sharpener

Technology

- 1 Power, Data and Auxiliary Connections to Teacher Station
- 1 Telephone (NIC) - Outlet Provided

Plumbing, Mechanical and Electrical Systems

- Electrical outlets conveniently located
- Analog Clock
- Ceiling Mounted Speaker

Lighting

- Access to Natural Daylight (Windows)
- Fluorescent Lighting
- Dual Level Light Switches

Other Considerations

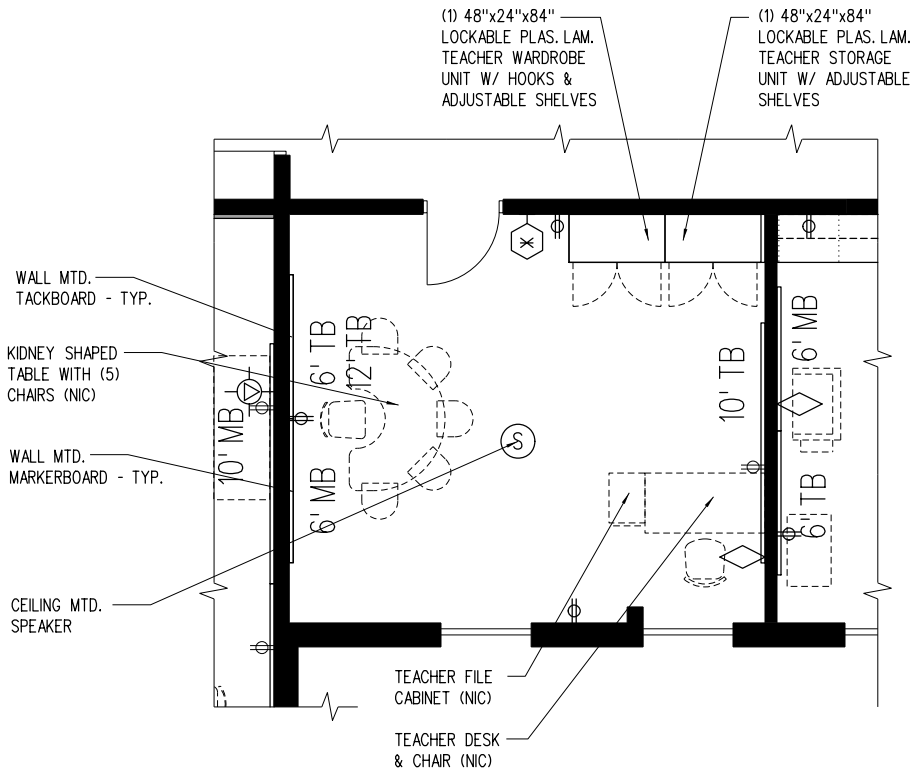
Room Finishes

Ceiling	Existing to Remain
Walls	Existing to Remain
Casework	Plastic Laminate
Horizontal Surfaces	Plastic Laminate
Floor	VCT
Floor Base	Rubber

Notes:

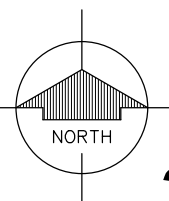
3-12.00

Speech-B (Existing)



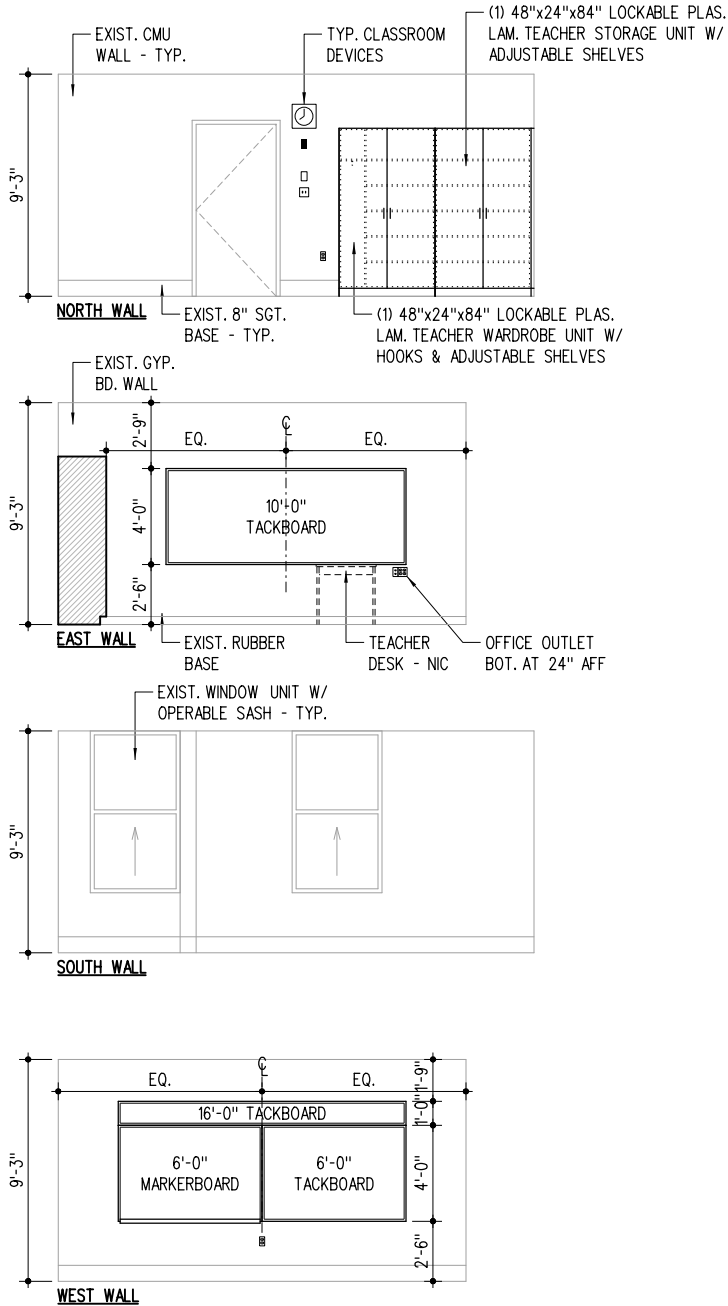
FLOOR PLAN

1/8" = 1'-0"



3-12.01

Speech-B (Existing)

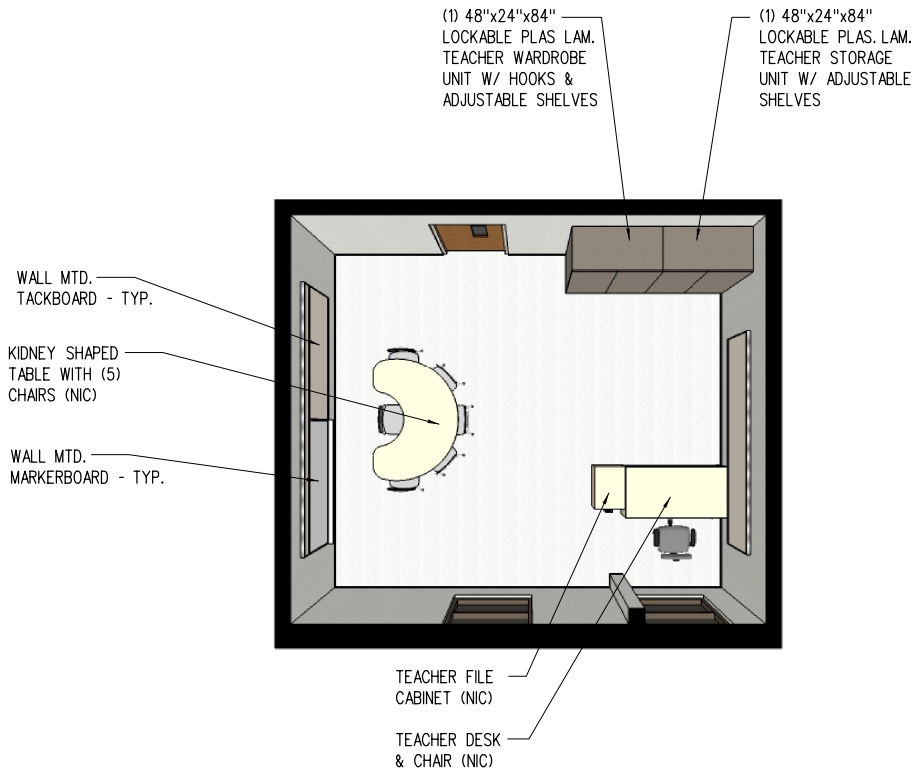


INTERIOR ELEVATIONS



3-12.02

Speech-B (Existing)



PERSPECTIVE

NS

3-12.03

Social Worker

	Unit Area (NSF)	Qty	Total Area (NSF)
Actual	280	1	280

Design Occupancy

1 Instructor + 4 Students

Typical Room Dimensions (Feet)

13.1 x 21.4

Built-In Casework

None

Room Finishes

Ceiling 2'x2' AC.T.

Walls Painted CMU

Casework Plastic Laminate

Horizontal Surfaces Plastic Laminate

Floor VCT

Floor Base Rubber

Visual Display

- 6 Markerboard (in linear feet) - Main Teaching Space
- 6 Tackboard (in linear feet) - Accessory Teaching Space

Furniture and Equipment (Not in Contract)

- Teacher desk and chair
- 1 2-drawer teacher file cabinet
- 1 Student worktable and chairs
- 4 Portable metal wardrobe unit

Notes:

Technology

- 1 Power, Data and Auxiliary Connections to Teacher Station
- 1 Telephone (NIC) - Outlet Provided
- 1 Wall Mounted 65"Wx49"H Smartboard at main teaching space (NIC)
- 1 Wall mounted projector (NIC) - provide projector outlet at teaching wall.

Plumbing, Mechanical and Electrical Systems

- Electrical outlets conveniently located
- Analog Clock
- Ceiling Mounted Speaker

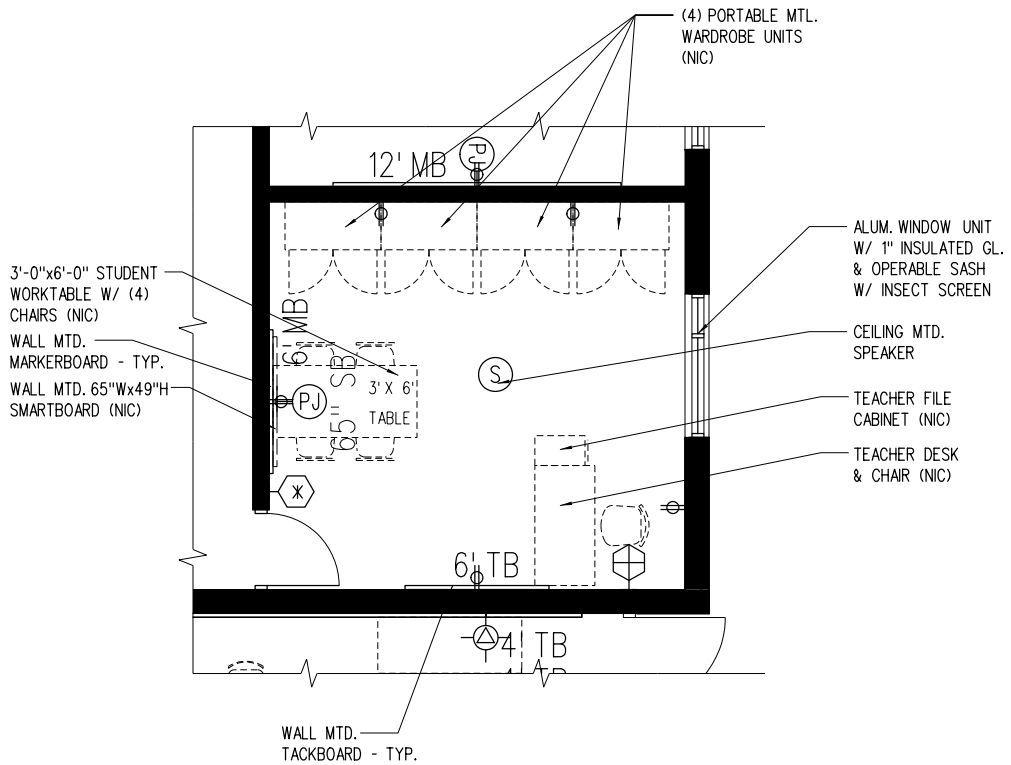
Lighting

- Access to Natural Daylight (Windows)
- Fluorescent Lighting
- Dual Level Light Switches

Other Considerations

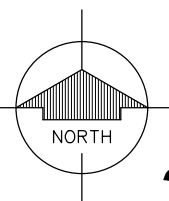
3-13.00

Social Worker



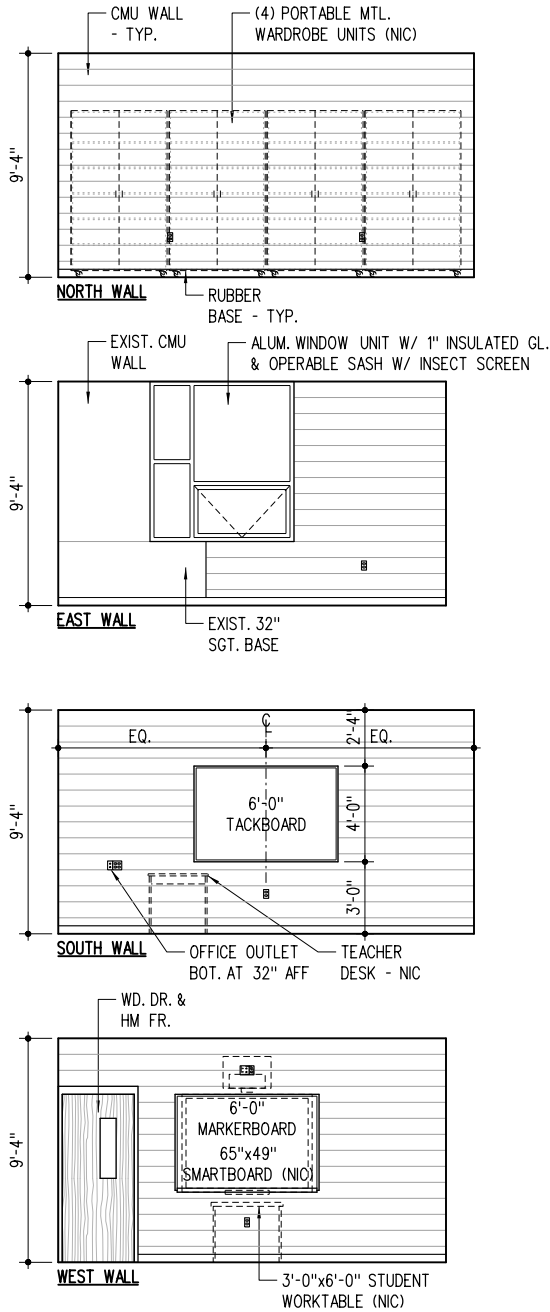
FLOOR PLAN

1/8" = 1'-0"



3-13.01

Social Worker



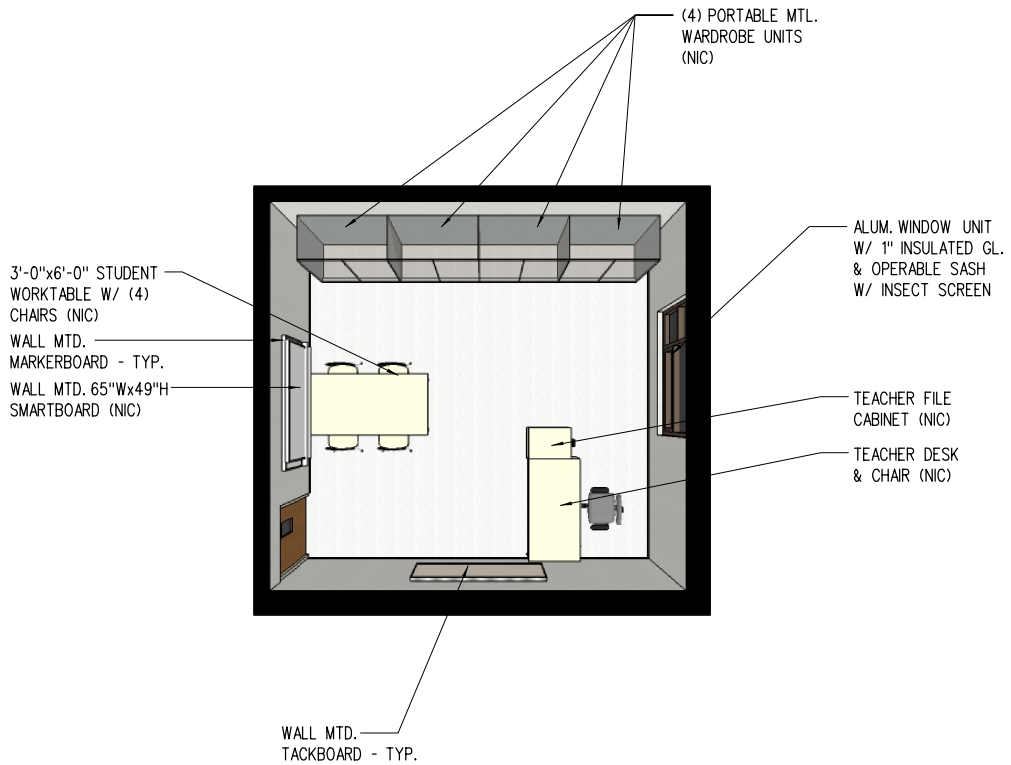
INTERIOR ELEVATIONS

1/8" = 1'-0" 0 2 4 8 16 24



3-13.02

Social Worker



PERSPECTIVE

NS

3-13.03