



PERU ELEMENTARY SCHOOL DISTRICT 124

Peru, La Salle County, Illinois

Addition and Renovation Northview Elementary School Design Development Manual

Healy | Bender Project No. 10-3113-145

Tab 3

April 8, 2014



Special Ed. Classroom-A

	Unit Area (NSF)	Qty	Total Area (NSF)
Actual	600	1	600

Design Occupancy

1 Instructor + 16 Students

Typical Room Dimensions (Feet)

21.0 x 28.6

Built-In Casework

- Lockable base cabinets (30"H) & wall cabinets (12"D) with plas. lam. countertop & back splash
- Plas. lam. countertop (30"H) on open plas. lam. base cabinets with adj. plas. lam. shelves
- 1 48"x24"x84" Lockable Teacher wardrobe unit w/ hooks and adjustable shelves
- 1 48"x24"x84" Lockable Teacher storage unit w/ adjustable shelves

Visual Display

- 6 Markerboard (in linear feet) - Main Teaching Space
- 6 Markerboard (in linear feet) - Accessory Teaching Space
- 4 Tackboard (in linear feet) - Main Teaching Space
- 6 Tackboard (in linear feet) - Accessory Teaching Space
- 12 12" Tackboard (in linear feet) - Accessory Teaching Space

Furniture and Equipment (Not in Contract)

- Student desks and chairs
- Teacher desk and chair
- 1 2-drawer teacher file cabinet
- 1 Student computer table with 3 chairs
- 1 Kidney shaped table with teacher chair and 5 student chairs
- Pencil Sharpener

Technology

- 1 Wall Mounted 65"Wx49"H Smartboard at main teaching space
- 1 Power, Data and Auxiliary Connections to Teacher Station
- 1 Telephone (NIC) - Outlet Provided
- 1 Student Outlet at computer table

Plumbing, Mechanical and Electrical Systems

- Sink in classroom (accessible by children)
- Electrical outlets conveniently located
- Adjacent Toilet Room accessible from classroom
- Analog Clock
- Ceiling Mounted Speaker
- Unit Ventilator on exterior wall

Lighting

- Access to Natural Daylight (Windows)
- Fluorescent Lighting
- Dual Level Light Switches

Other Considerations

- Changing table in adjacent shared toilet room

Room Finishes

Ceiling	2'x2' AC.T.
Walls	Painted CMU
Casework	Plastic Laminate
Horizontal Surfaces	Plastic Laminate
Floor	VCT
Floor Base	Rubber

Notes:

Tackboards and markerboards to be mounted lower for younger student accessibility

Currently no provisions for coat hooks and shelves provided in adjacent corridor for dedicated Special Education use.

3-1.00

Special Ed. Toilet

	Unit Area (NSF)	Qty	Total Area (NSF)
Actual	119	1	119

Design Occupancy

1 Person

Typical Room Dimensions (Feet)

8.5 x 14.0

Plumbing, Mechanical and Electrical Systems

Automatic flush valves/sensors on sink and toilet
Student height wall switches

Room Finishes

Ceiling	Gyp. Board
Walls	Epoxy Painted CMU
Casework	N/A
Horizontal Surfaces	N/A
Floor	Ceramic Tile
Floor Base	Ceramic Tile

Lighting

Fluorescent Lighting

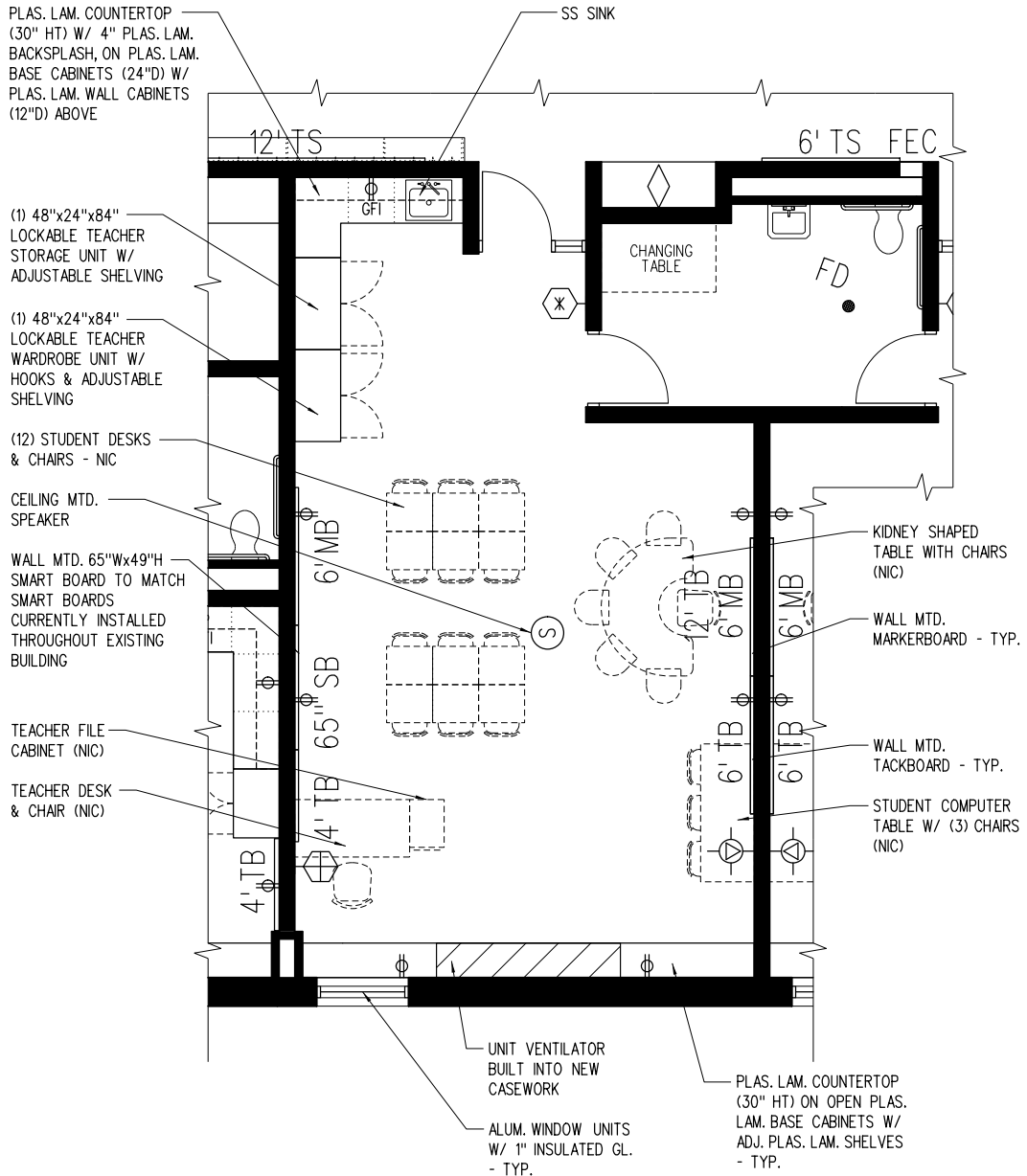
Other Considerations

18"W x 36"H Wall Mounted Mirror Above Lavatory
ADA Accessible / Grab Bars
Clear area for existing changing table

Notes:

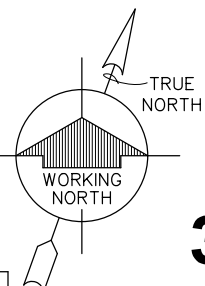
3-1.00a

Special Ed. Classroom-A



FLOOR PLAN

1/8" = 1'-0"



3-1.01

Special Ed. Classroom-A

PLAS. LAM. COUNTERTOP (30" HT) W/ 4" PLAS. LAM. BACKSPLASH, ON PLAS. LAM. BASE CABINETS (24"D) W/ PLAS. LAM. WALL CABINETS (12"D) ABOVE

SS SINK

(1) 48"x24"x84" LOCKABLE TEACHER STORAGE UNIT W/ ADJUSTABLE SHELVING

(1) 48"x24"x84" LOCKABLE TEACHER WARDROBE UNIT W/ HOOKS & ADJUSTABLE SHELVING

(12) STUDENT DESKS & CHAIRS - NIC

WALL MTD. 65"Wx49"H SMART BOARD TO MATCH SMART BOARDS CURRENTLY INSTALLED THROUGHOUT EXISTING BUILDING

TEACHER FILE CABINET (NIC)

TEACHER DESK & CHAIR (NIC)

KIDNEY SHAPED TABLE WITH CHAIRS (NIC)

WALL MTD. MARKERBOARD - TYP.

WALL MTD. TACKBOARD - TYP.

STUDENT COMPUTER TABLE W/ (3) CHAIRS (NIC)

UNIT VENTILATOR BUILT INTO NEW CASEWORK

ALUM. WINDOW UNITS W/ 1" INSULATED GL. - TYP.

PLAS. LAM. COUNTERTOP (30" HT) ON OPEN PLAS. LAM. BASE CABINETS W/ ADJ. PLAS. LAM. SHELVES - TYP.

PERSPECTIVE

NS

3-1.03

Special Ed. Classroom-B

	Unit Area (NSF)	Qty	Total Area (NSF)
Actual	600	1	600

Design Occupancy

1 Instructor + 16 Students

Typical Room Dimensions (Feet)

18.8 x 31.9

Built-In Casework

- Lockable base cabinets (30"H) & wall cabinets (12"D) with plas. lam. countertop & back splash
- Plas. lam. countertop (30"H) on open plas. lam. base cabinets with adj. plas. lam. shelves
- 1 48"x24"x84" Lockable Teacher wardrobe unit w/ hooks and adjustable shelves
- 1 48"x24"x84" Lockable Teacher storage unit w/ adjustable shelves

Visual Display

- 6 Markerboard (in linear feet) - Main Teaching Space
- 6 Markerboard (in linear feet) - Accessory Teaching Space
- 4 Tackboard (in linear feet) - Main Teaching Space
- 6 Tackboard (in linear feet) - Accessory Teaching Space
- 12 12" Tackboard (in linear feet) - Accessory Teaching Space

Furniture and Equipment (Not in Contract)

- Student desks and chairs
- Teacher desk and chair
- 1 2-drawer teacher file cabinet
- 1 Student computer table with 3 chairs
- 1 Kidney shaped table with teacher chair and 5 student chairs
- Pencil Sharpener

Technology

- 1 Wall Mounted 65"Wx49"H Smartboard at main teaching space
- 1 Power, Data and Auxiliary Connections to Teacher Station
- 1 Telephone (NIC) - Outlet Provided
- 1 Student Outlet at computer table

Plumbing, Mechanical and Electrical Systems

- Sink in classroom (accessible by children)
- Electrical outlets conveniently located
- Adjacent Toilet Room accessible from classroom
- Analog Clock
- Ceiling Mounted Speaker
- Unit Ventilator on exterior wall

Lighting

- Access to Natural Daylight (Windows)
- Fluorescent Lighting
- Dual Level Light Switches

Other Considerations

- Changing table in adjacent shared toilet room

Room Finishes

Ceiling	2'x2' AC.T.
Walls	Painted CMU
Casework	Plastic Laminate
Horizontal Surfaces	Plastic Laminate
Floor	VCT
Floor Base	Rubber

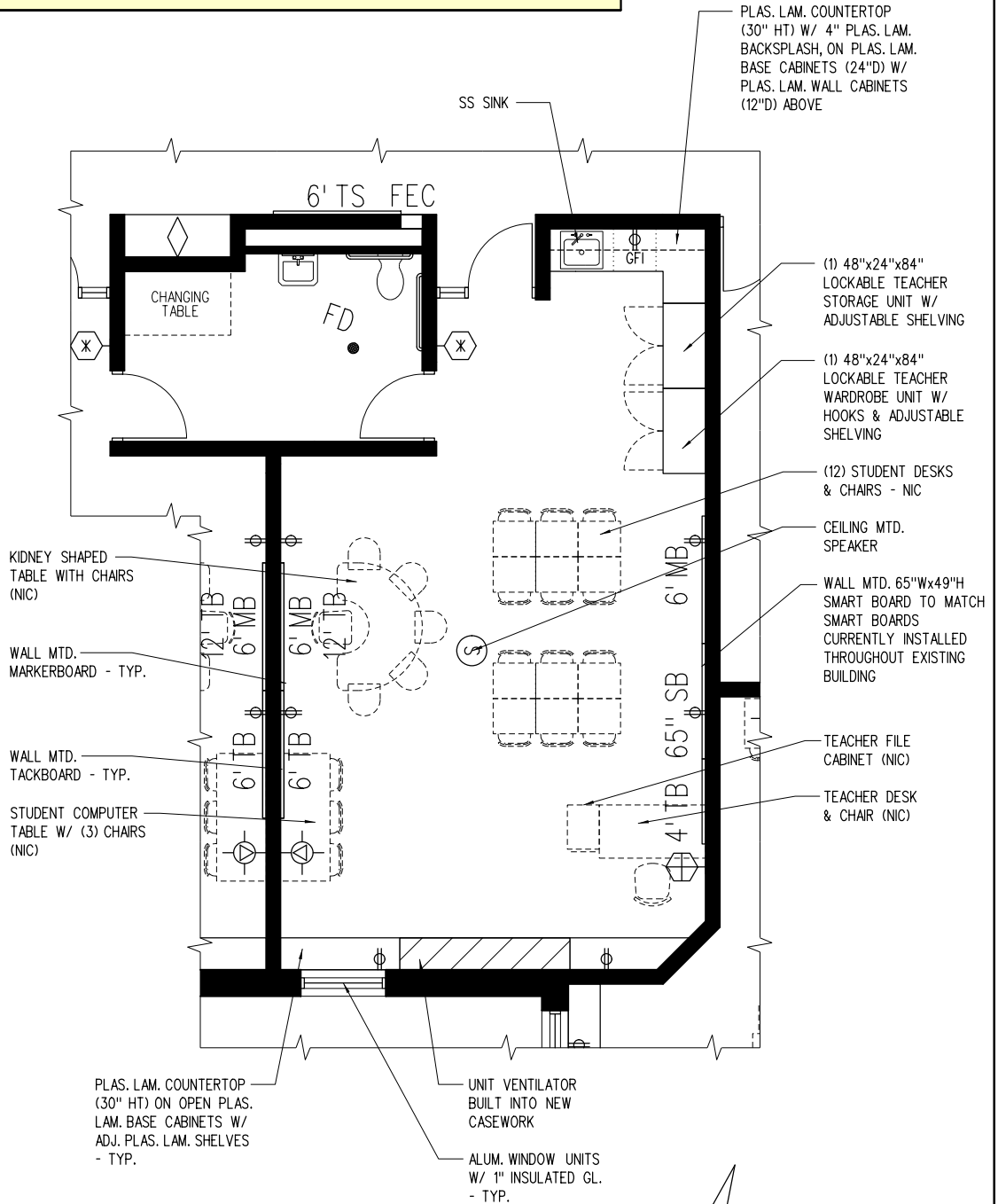
Notes:

Tackboards and markerboards to be mounted lower for younger student accessibility

Currently no provisions for coat hooks and shelves provided in adjacent corridor for dedicated Special Education use.

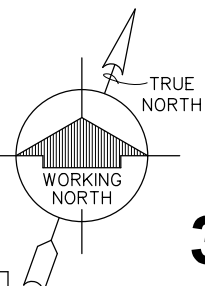
3-2.00

Special Ed. Classroom-B



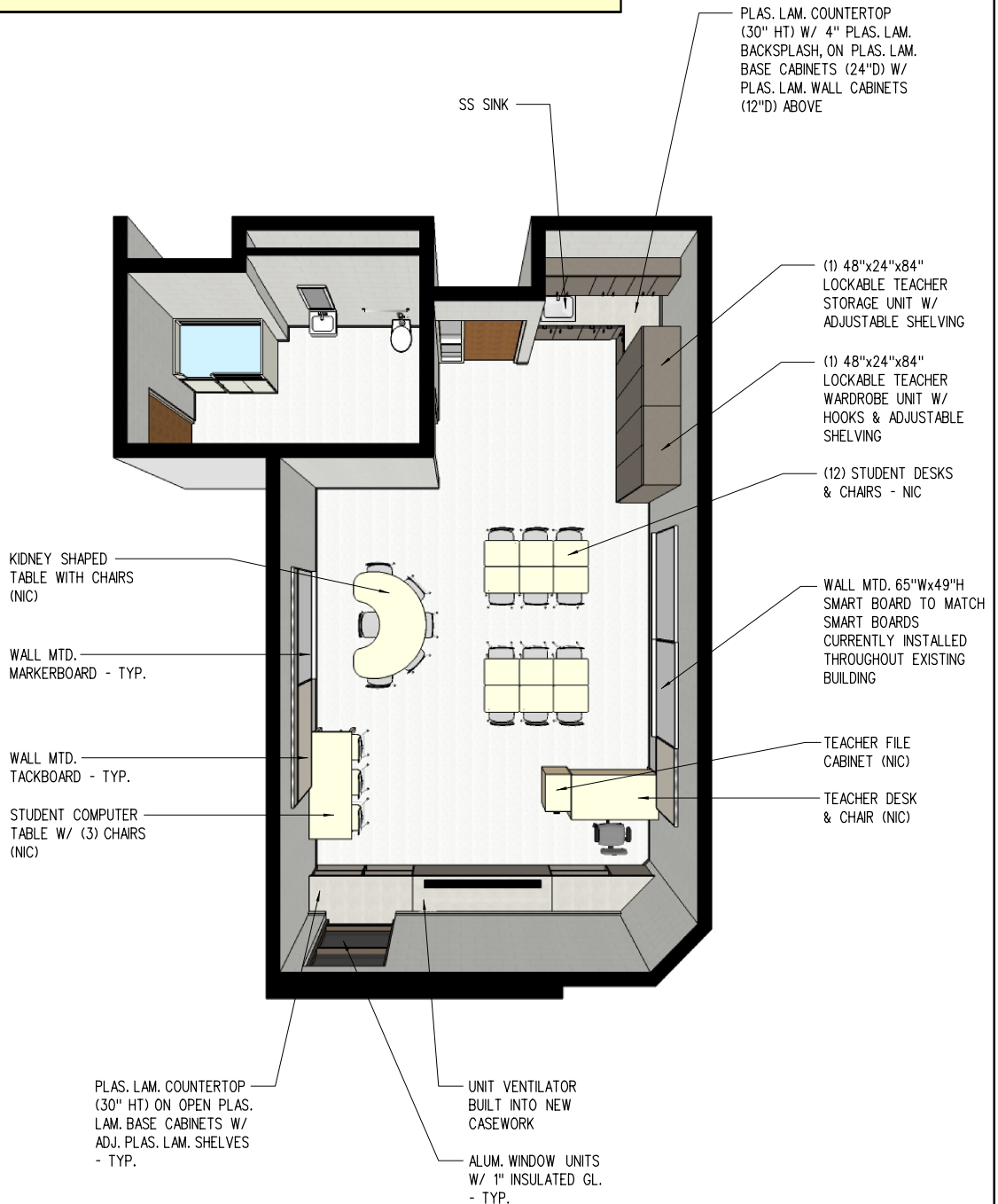
FLOOR PLAN

1/8" = 1'-0"



3-2.01

Special Ed. Classroom-B



PERSPECTIVE

NS

3-2.03

Special Ed. Classroom-C

	Unit Area (NSF)	Qty	Total Area (NSF)
Actual	600	1	600

Design Occupancy

1 Instructor + 16 Students

Typical Room Dimensions (Feet)

27.8 x 21.6

Built-In Casework

- Lockable base cabinets (30"H) & wall cabinets (12"D) with plas. lam. countertop & back splash
- Plas. lam. countertop (30"H) on open plas. lam. base cabinets with adj. plas. lam. shelves
- 1 48"x24"x84" Lockable Teacher wardrobe unit w/ hooks and adjustable shelves
- 1 48"x24"x84" Lockable Teacher storage unit w/ adjustable shelves

Visual Display

- 6 Markerboard (in linear feet) - Main Teaching Space
- 6 Markerboard (in linear feet) - Accessory Teaching Space
- 4 Tackboard (in linear feet) - Main Teaching Space
- 6 Tackboard (in linear feet) - Accessory Teaching Space
- 12 12" Tackboard (in linear feet) - Accessory Teaching Space

Furniture and Equipment (Not in Contract)

- Student desks and chairs
- Teacher desk and chair
- 1 2-drawer teacher file cabinet
- 1 Student computer table with 3 chairs
- 1 Kidney shaped table with teacher chair and 5 student chairs
- Pencil Sharpener

Technology

- 1 Wall Mounted 65"Wx49"H Smartboard at main teaching space
- 1 Power, Data and Auxiliary Connections to Teacher Station
- 1 Telephone (NIC) - Outlet Provided
- 1 Student Outlet at computer table

Plumbing, Mechanical and Electrical Systems

- Sink in classroom (accessible by children)
- Electrical outlets conveniently located
- Analog Clock
- Ceiling Mounted Speaker

Lighting

- Access to Natural Daylight (Windows)
- Fluorescent Lighting
- Dual Level Light Switches

Other Considerations

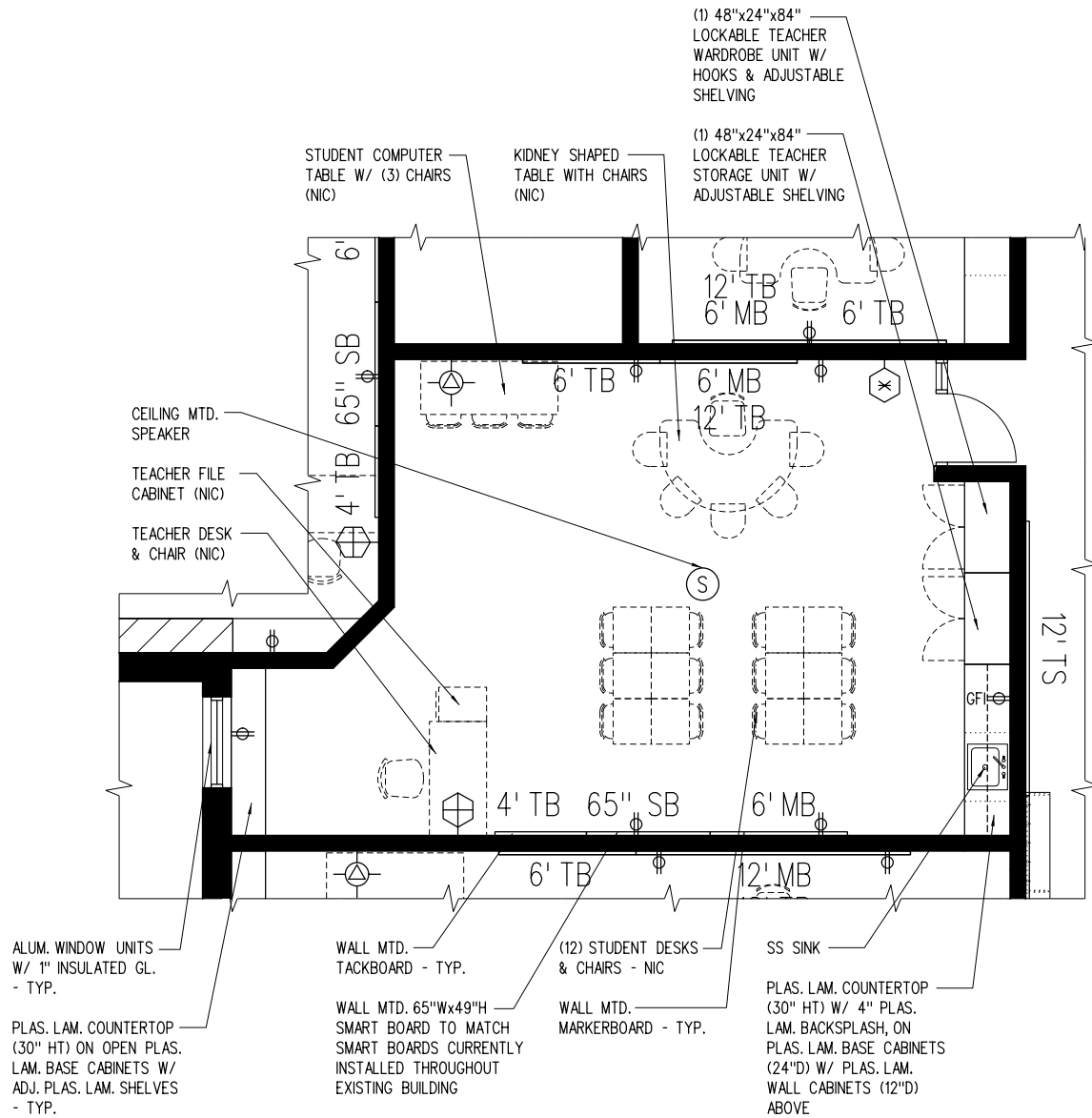
Room Finishes

Ceiling	2'x2' AC.T.
Walls	Painted CMU
Casework	Plastic Laminate
Horizontal Surfaces	Plastic Laminate
Floor	VCT
Floor Base	Rubber

Notes:

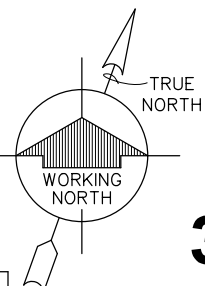
3-3.00

Special Ed. Classroom-C



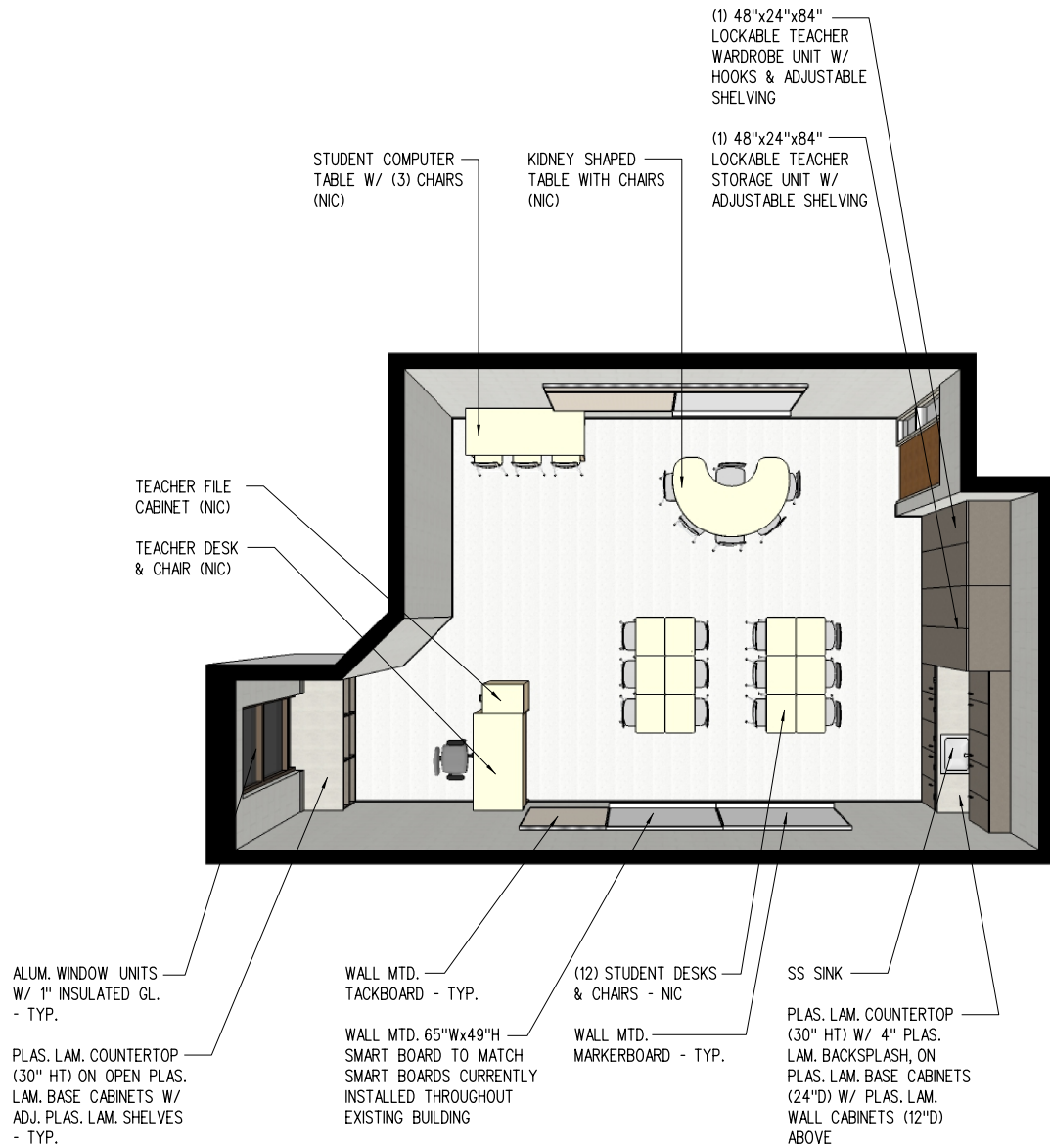
FLOOR PLAN

1/8" = 1'-0" 0 2 4 8 16 24



3-3.01

Special Ed. Classroom-C



PERSPECTIVE

NS

3-3.03

Special Ed. Classroom-D

	Unit Area (NSF)	Qty	Total Area (NSF)
Actual	731	1	731

Design Occupancy

1 Instructor + 16 Students

Typical Room Dimensions (Feet)

26.9 x **27.2**

Built-In Casework

- Lockable base cabinets (30"H) & wall cabinets (12"D) with plas. lam. countertop & back splash
- Plas. lam. countertop (30"H) on open plas. lam. base cabinets with adj. plas. lam. shelves
- 1 48"x24"x84" Lockable Teacher wardrobe unit w/ hooks and adjustable shelves
- 1 48"x24"x84" Lockable Teacher storage unit w/ adjustable shelves

Visual Display

- 8 Markerboard (in linear feet) - Main Teaching Space
- 6 Markerboard (in linear feet) - Accessory Teaching Space
- 2 Tackboard (in linear feet) - Main Teaching Space
- 4 Tackboard (in linear feet) - Accessory Teaching Space
- 4 Tackboard (in linear feet) - Accessory Teaching Space
- 10 12" Tackboard (in linear feet) - Main Teaching Space
- 14 12" Tackboard (in linear feet) - Accessory Teaching Space

Furniture and Equipment (Not in Contract)

- Student desks and chairs
- Teacher desk and chair
- 1 2-drawer teacher file cabinet
- 1 Student computer table with 3 chairs
- Pencil Sharpener

Technology

- 1 Wall Mounted 65"Wx49"H Smartboard at main teaching space
- 1 Power, Data and Auxiliary Connections to Teacher Station
- 1 Telephone (NIC) - Outlet Provided
- 1 Student Outlet at computer table

Plumbing, Mechanical and Electrical Systems

- Electrical outlets conveniently located
- Analog Clock
- Ceiling Mounted Speaker

Lighting

- Access to Natural Daylight (Windows)
- Fluorescent Lighting
- Dual Level Light Switches

Other Considerations

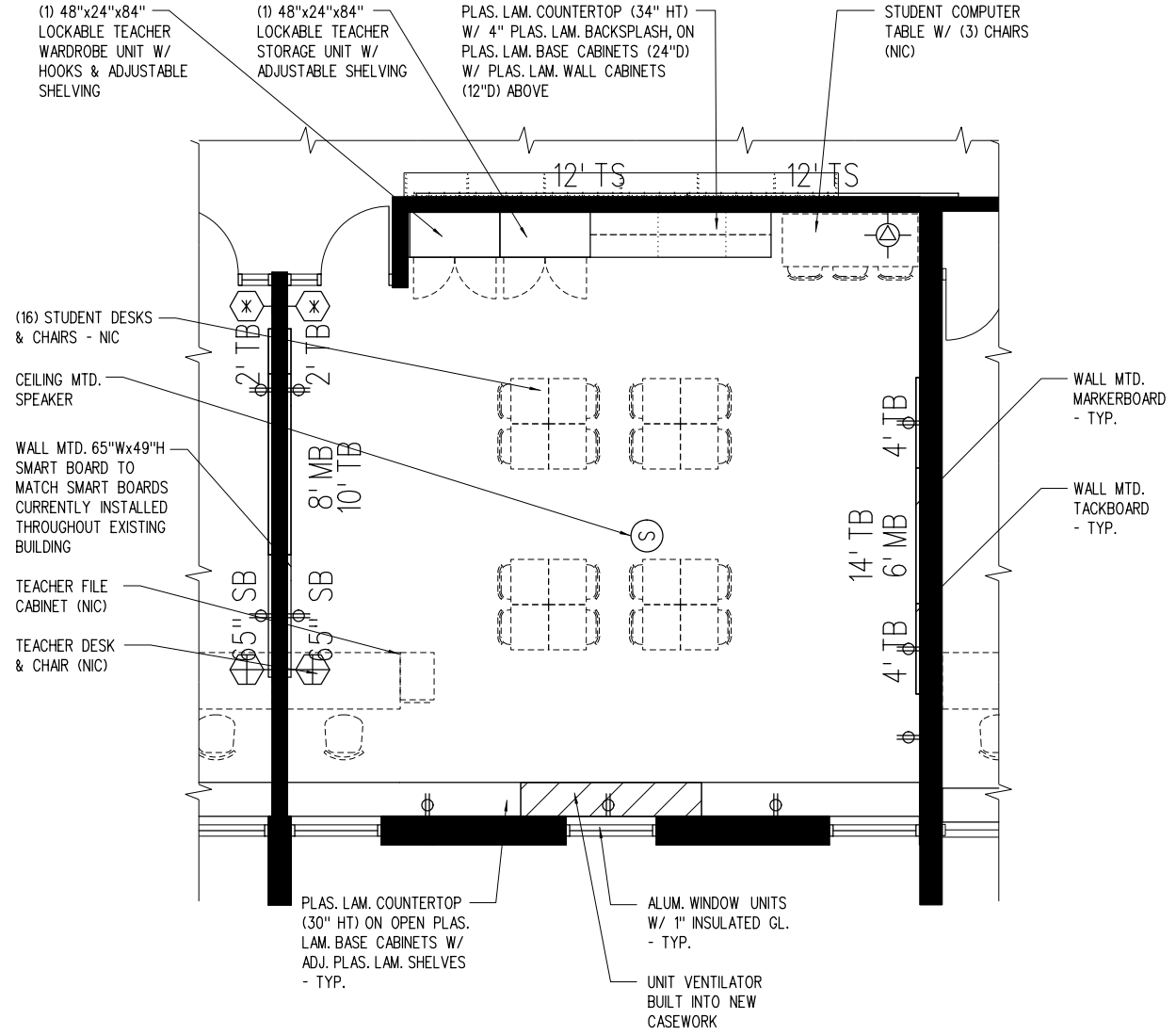
Room Finishes

Ceiling	2'x2' AC.T.
Walls	Painted CMU
Casework	Plastic Laminate
Horizontal Surfaces	Plastic Laminate
Floor	VCT
Floor Base	Rubber

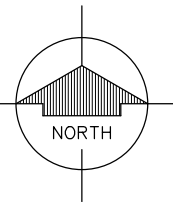
Notes:

3-4.00

Special Ed. Classroom-D

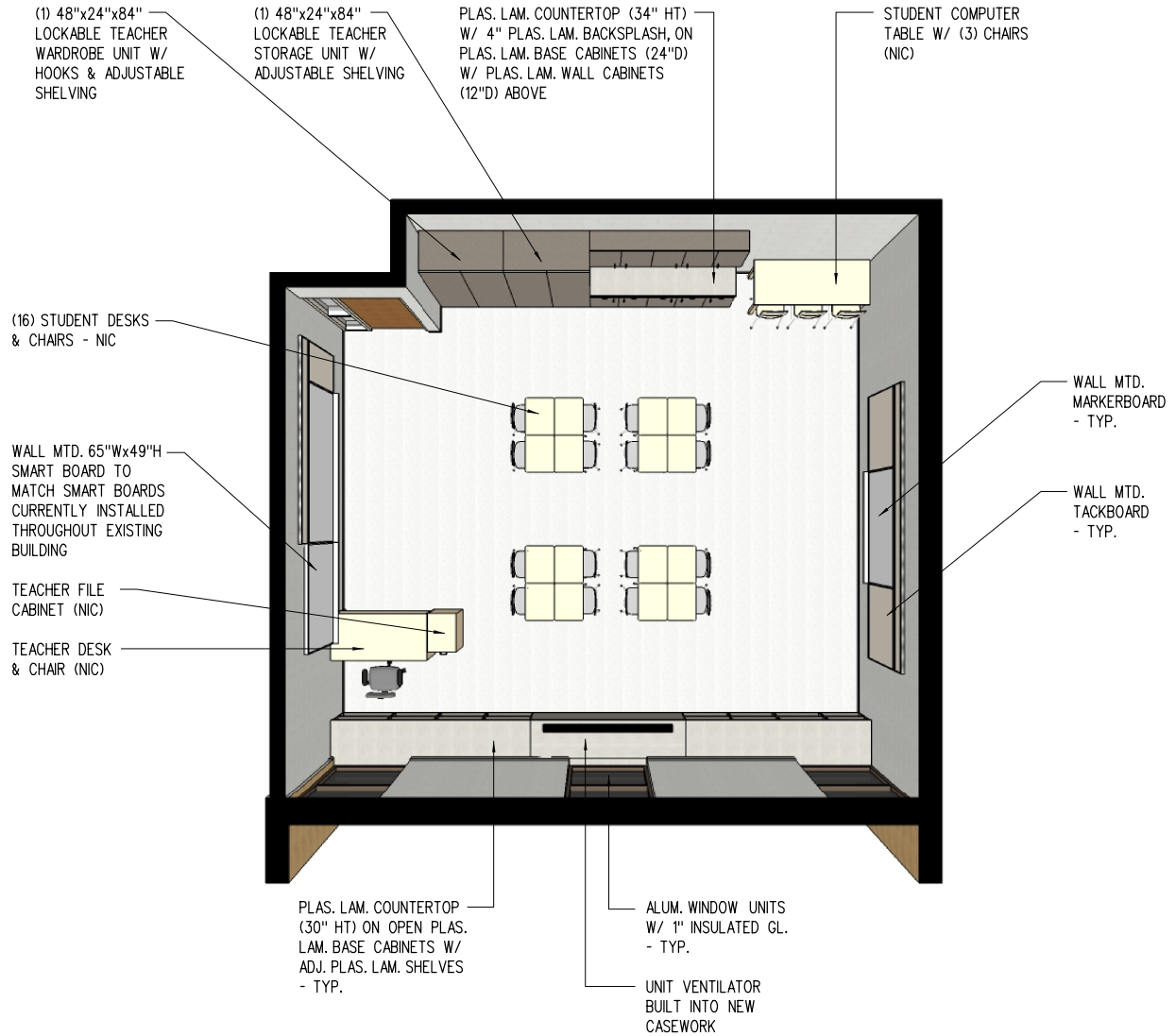


FLOOR PLAN



3-4.01

Special Ed. Classroom-D



PERSPECTIVE

NS

3-4.03

Special Ed. Classroom-E (Existing)

	Unit Area (NSF)	Qty	Total Area (NSF)
Actual	624	1	624

Design Occupancy

1 Instructor + 16 Students

Typical Room Dimensions (Feet)

27.0 x 23.1

Built-In Casework

- Lockable base cabinets (30"H) & wall cabinets (12"D) with plas. lam. countertop & back splash
- Plas. lam. countertop (30"H) on open plas. lam. base cabinets with adj. plas. lam. shelves
- 1 48"x24"x84" Lockable Teacher wardrobe unit w/ hooks and adjustable shelves
- 1 48"x24"x84" Lockable Teacher storage unit w/ adjustable shelves

Visual Display

- 10 Markerboard (in linear feet) - Main Teaching Space
- 6 Markerboard (in linear feet) - Accessory Teaching Space
- 4 Tackboard (in linear feet) - Accessory Teaching Space
- 4 Tackboard (in linear feet) - Accessory Teaching Space
- 10 12" Tackboard (in linear feet) - Main Teaching Space
- 14 12" Tackboard (in linear feet) - Accessory Teaching Space

Furniture and Equipment (Not in Contract)

- Student desks and chairs
- Teacher desk and chair
- 1 2-drawer teacher file cabinet
- 1 Student computer table with 3 chairs
- Pencil Sharpener

Technology

- 1 Wall Mounted 65"Wx49"H Smartboard at main teaching space
- 1 Power, Data and Auxiliary Connections to Teacher Station
- 1 Telephone (NIC) - Outlet Provided
- 1 Student Outlet at computer table

Plumbing, Mechanical and Electrical Systems

- Electrical outlets conveniently located
- Analog Clock
- Ceiling Mounted Speaker
- Unit ventilator at perimeter wall - built-in to new casework

Lighting

- Access to Natural Daylight (Windows)
- Fluorescent Lighting
- Dual Level Light Switches

Other Considerations

Room Finishes

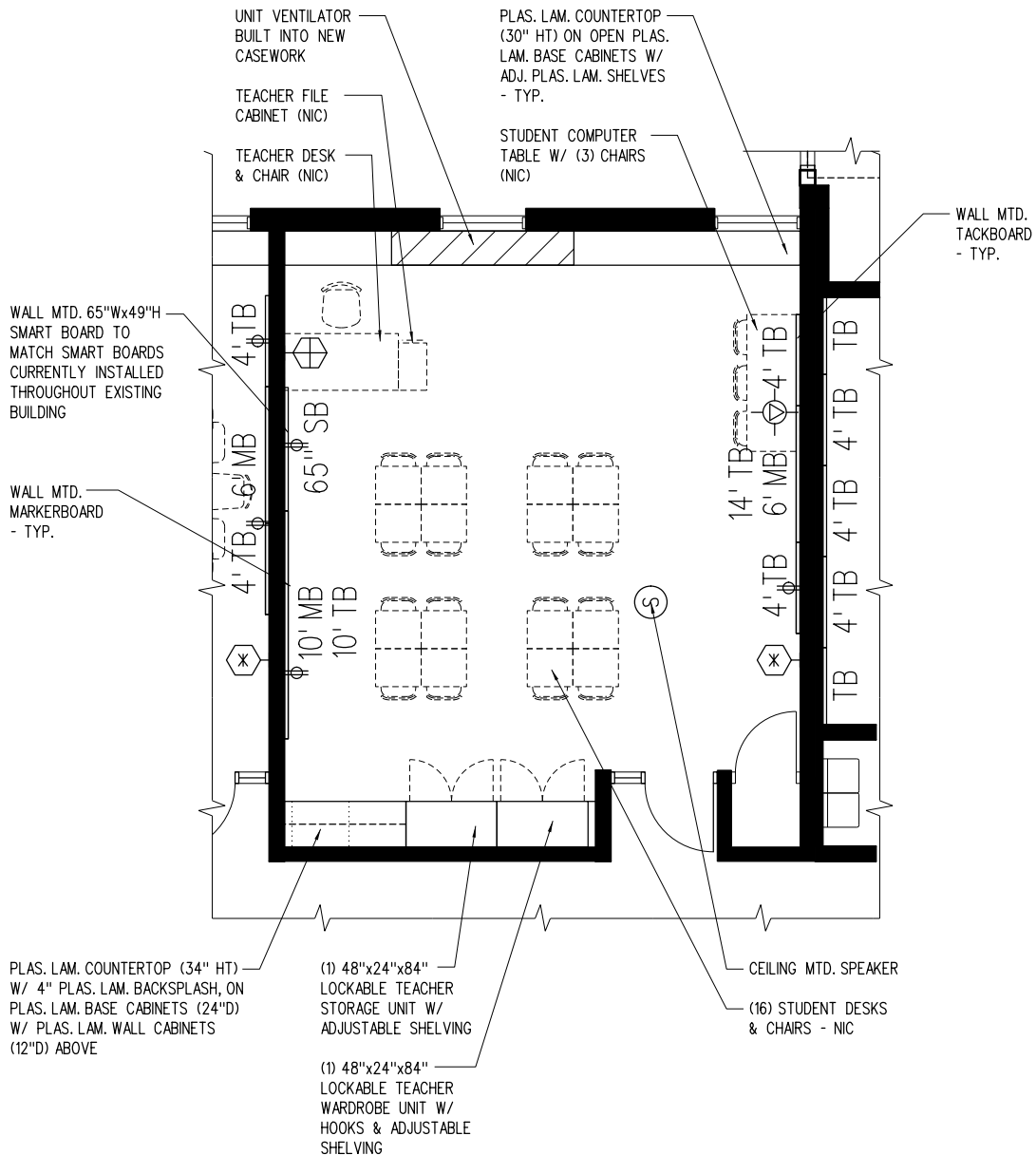
Ceiling	Modify Existing
Walls	Painted CMU
Casework	Plastic Laminate
Horizontal Surfaces	Plastic Laminate
Floor	VCT
Floor Base	Rubber

Notes:

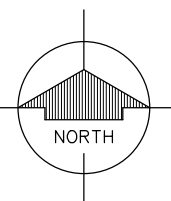
Located in portion of existing classroom. Modify existing casework, MEP systems, ceiling grid and lighting to accommodate the new space.

3-5.00

Special Ed. Classroom-E (Existing)

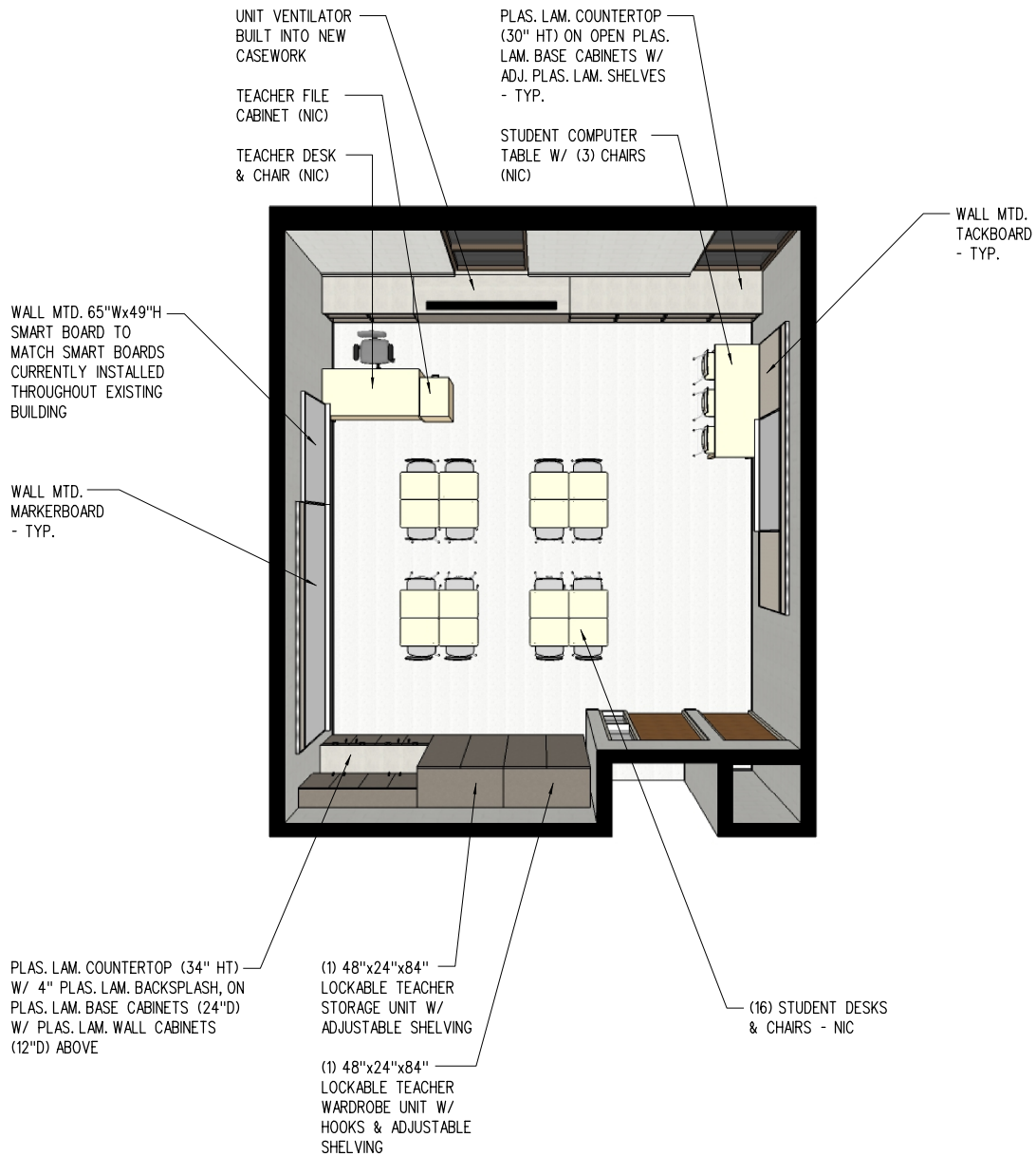


FLOOR PLAN



3-5.01

Special Ed. Classroom-E (Existing)



PERSPECTIVE

NS

3-5.03

Special Ed. Classroom-F (Existing)

	Unit Area (NSF)	Qty	Total Area (NSF)
Actual	592	1	592

Design Occupancy

1 Instructor + 16 Students

Typical Room Dimensions (Feet)

27.0 x 21.9

Built-In Casework

- Lockable base cabinets (30"H) & wall cabinets (12"D) with plas. lam. countertop & back splash
- Plas. lam. countertop (30"H) on open plas. lam. base cabinets with adj. plas. lam. shelves
- 1 48"x24"x84" Lockable Teacher wardrobe unit w/ hooks and adjustable shelves
- 1 48"x24"x84" Lockable Teacher storage unit w/ adjustable shelves

Visual Display

- 10 Markerboard (in linear feet) - Main Teaching Space
- 11 Existing Tackboard (in linear feet) - Accessory Teaching Space
- 14 Existing Tackboard (in linear feet) - Accessory Teaching Space
- 10 12" Tackboard (in linear feet) - Main Teaching Space

Furniture and Equipment (Not in Contract)

- Student desks and chairs
- Teacher desk and chair
- 1 2-drawer teacher file cabinet
- 1 Student computer table with 3 chairs
- Pencil Sharpener

Technology

- 1 Wall Mounted 65"Wx49"H Smartboard at main teaching space
- 1 Power, Data and Auxiliary Connections to Teacher Station
- 1 Telephone (NIC) - Outlet Provided
- 1 Student Outlet at computer table

Plumbing, Mechanical and Electrical Systems

- Electrical outlets conveniently located as necessary to supplement existing outlets.
- Analog Clock
- Ceiling Mounted Speaker

Lighting

- Access to Natural Daylight (Windows)
- Fluorescent Lighting
- Dual Level Light Switches

Other Considerations

Room Finishes

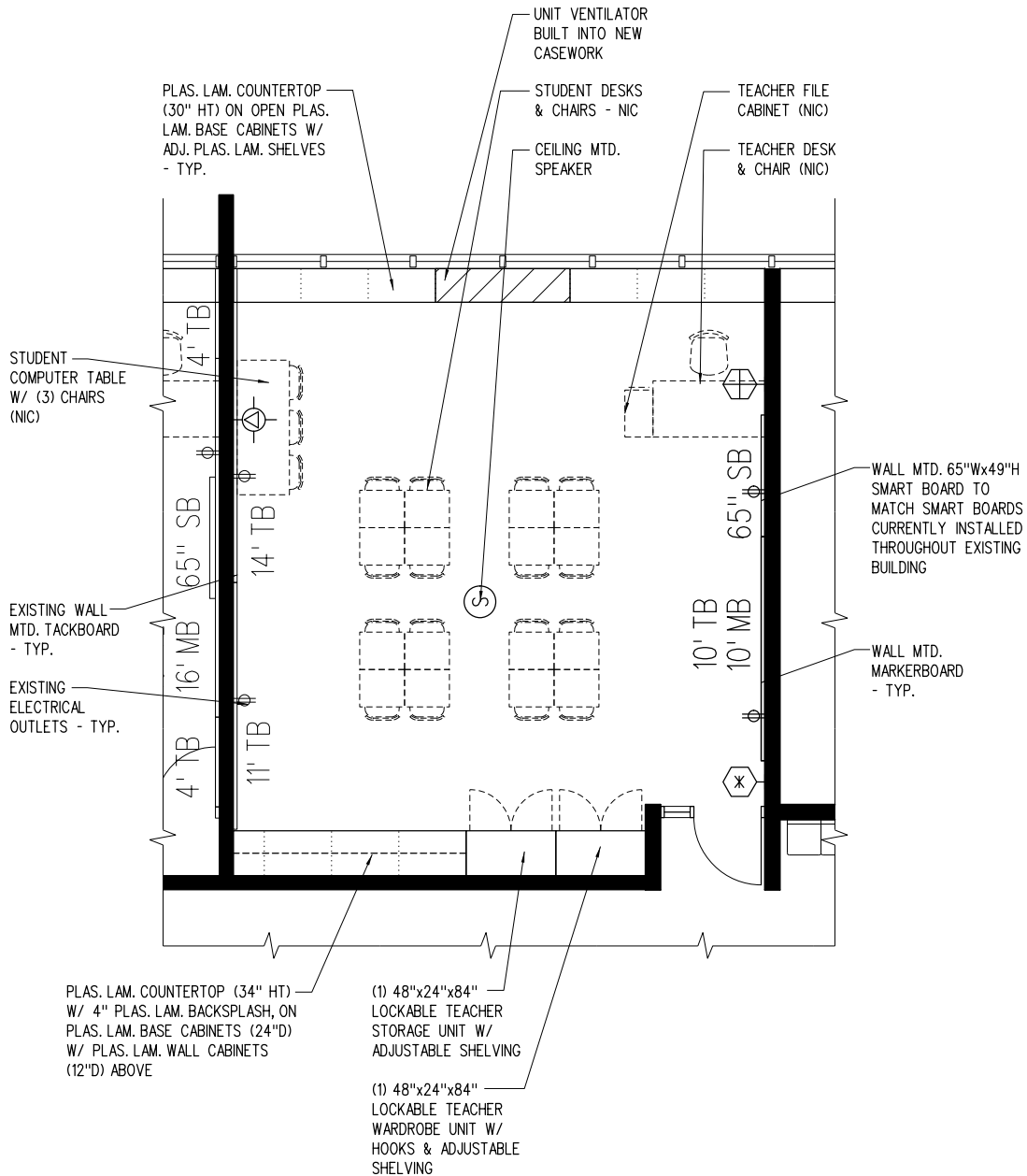
Ceiling	Modify Existing
Walls	Painted CMU
Casework	Plastic Laminate
Horizontal Surfaces	Plastic Laminate
Floor	VCT
Floor Base	Rubber

Notes:

Located in portion of existing classroom. Modify existing casework, MEP systems, ceiling grid and lighting to accommodate the new space.

3-6.00

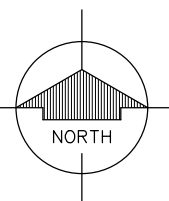
Special Ed. Classroom-F (Existing)



FLOOR PLAN

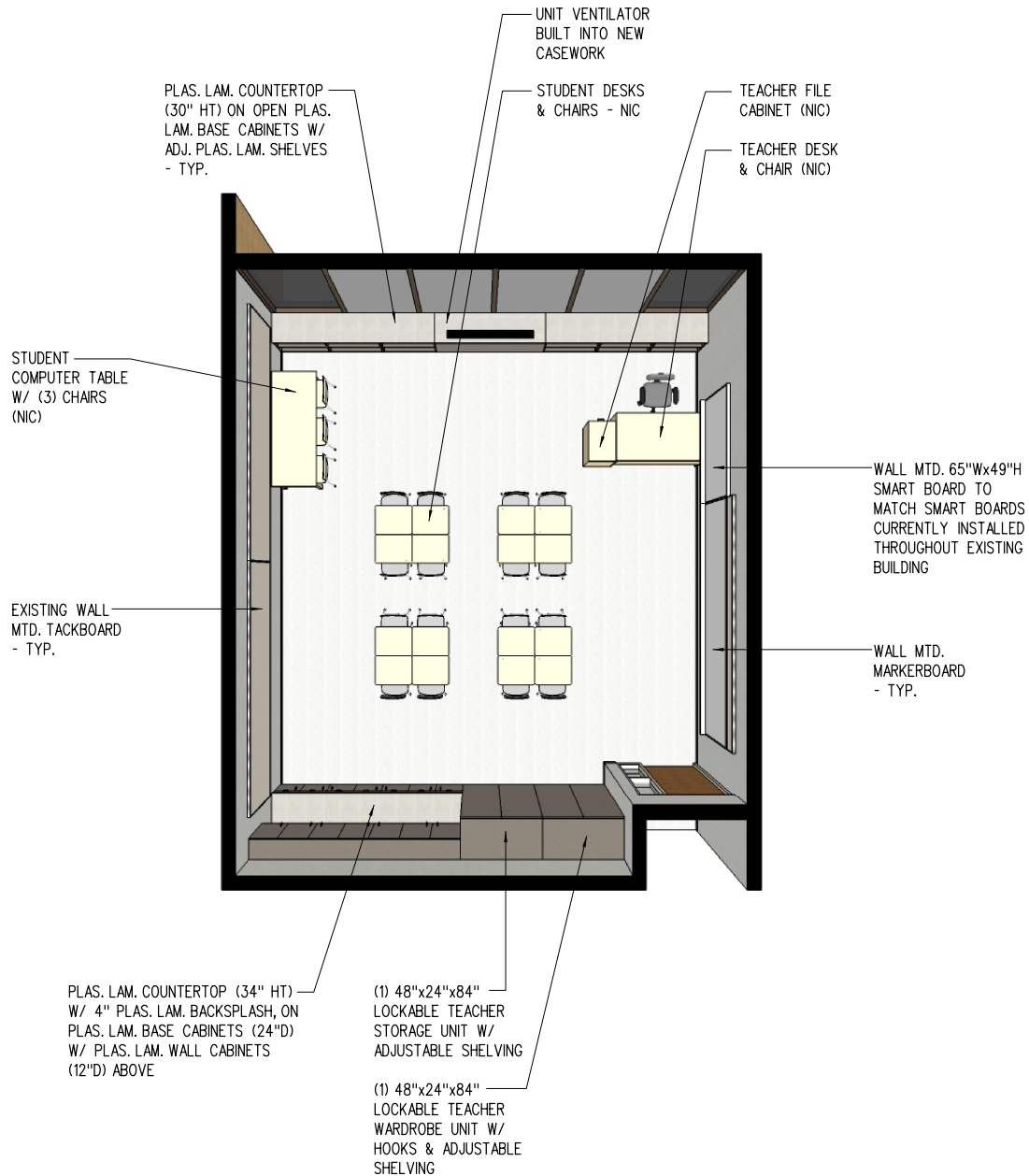
1/8" = 1'-0"

0 2 4 8 16 24



3-6.01

Special Ed. Classroom-F (Existing)



PERSPECTIVE

NS

3-6.03

Reading Recovery-A

	Unit Area (NSF)	Qty	Total Area (NSF)
Actual	307	1	307

Design Occupancy

1 Instructor + 6 Students

Typical Room Dimensions (Feet)

16.0 x 19.2

Built-In Casework

- Lockable base cabinets (30"H) & wall cabinets (12"D) with plas. lam. countertop & back splash
- 1 48"x24"x84" Lockable Teacher wardrobe unit w/ hooks and adjustable shelves

Visual Display

- 6 Markerboard (in linear feet) - Main Teaching Space
- 4 Tackboard (in linear feet) - Main Teaching Space
- 4 Tackboard (in linear feet) - Main Teaching Space
- 14 12" Tackboard (in linear feet) - Accessory Teaching Space

Furniture and Equipment (Not in Contract)

- Teacher desk and chair
- 1 Student worktable and chairs
- 1 2-drawer teacher file cabinet
- 1 Student computer table with 3 chairs
- 1 Kidney shaped table with teacher chair and 5 student chairs
- Pencil Sharpener

Technology

- 1 Wall Mounted 65"Wx49"H Smartboard at main teaching space
- 1 Power, Data and Auxiliary Connections to Teacher Station
- 1 Telephone (NIC) - Outlet Provided
- 1 Student Outlet at computer table

Plumbing, Mechanical and Electrical Systems

- Electrical outlets conveniently located
- Analog Clock
- Ceiling Mounted Speaker

Lighting

- Access to Natural Daylight (Windows)
- Fluorescent Lighting
- Dual Level Light Switches
- Lighting to be arranged and switched for proper operation of 2-way observation window

Other Considerations

- 2-way observation window in wall between adjacent Reading Recovery room.
- Black-out shades at exterior windows for interior lighting control

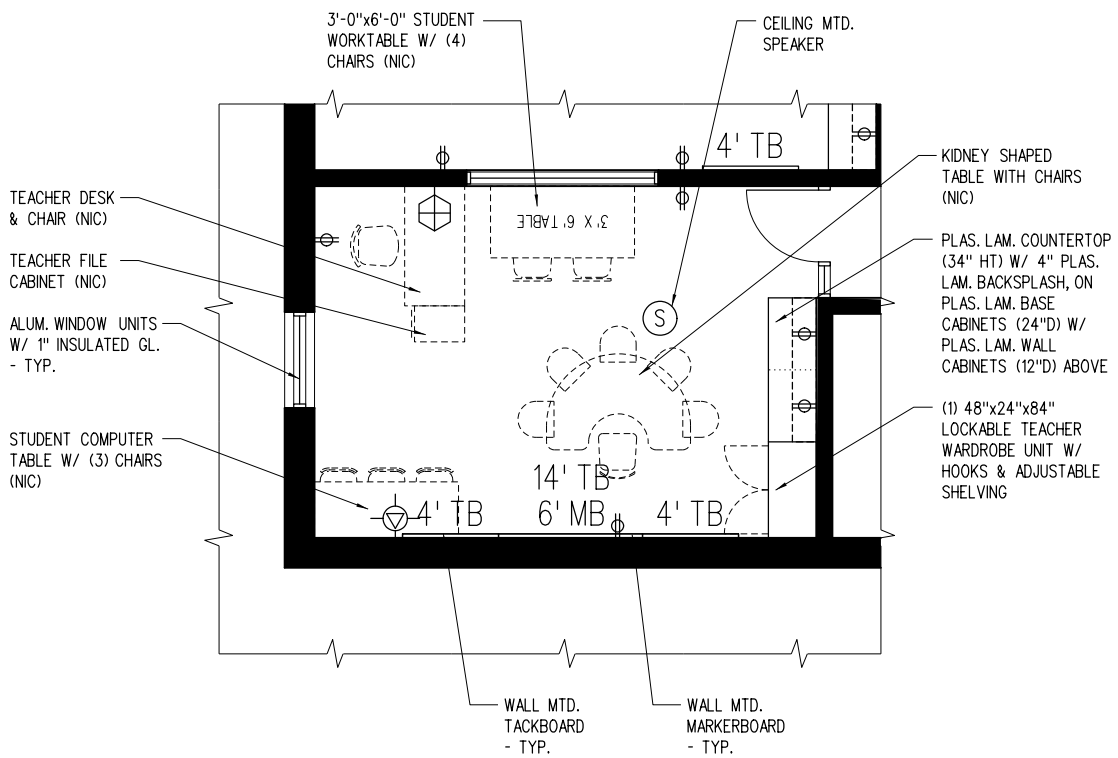
Room Finishes

Ceiling	2'x2' AC.T.
Walls	Painted CMU
Casework	Plastic Laminate
Horizontal Surfaces	Plastic Laminate
Floor	VCT
Floor Base	Rubber

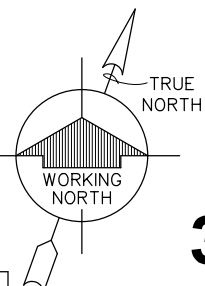
Notes:

3-7.00

Reading Recovery-A

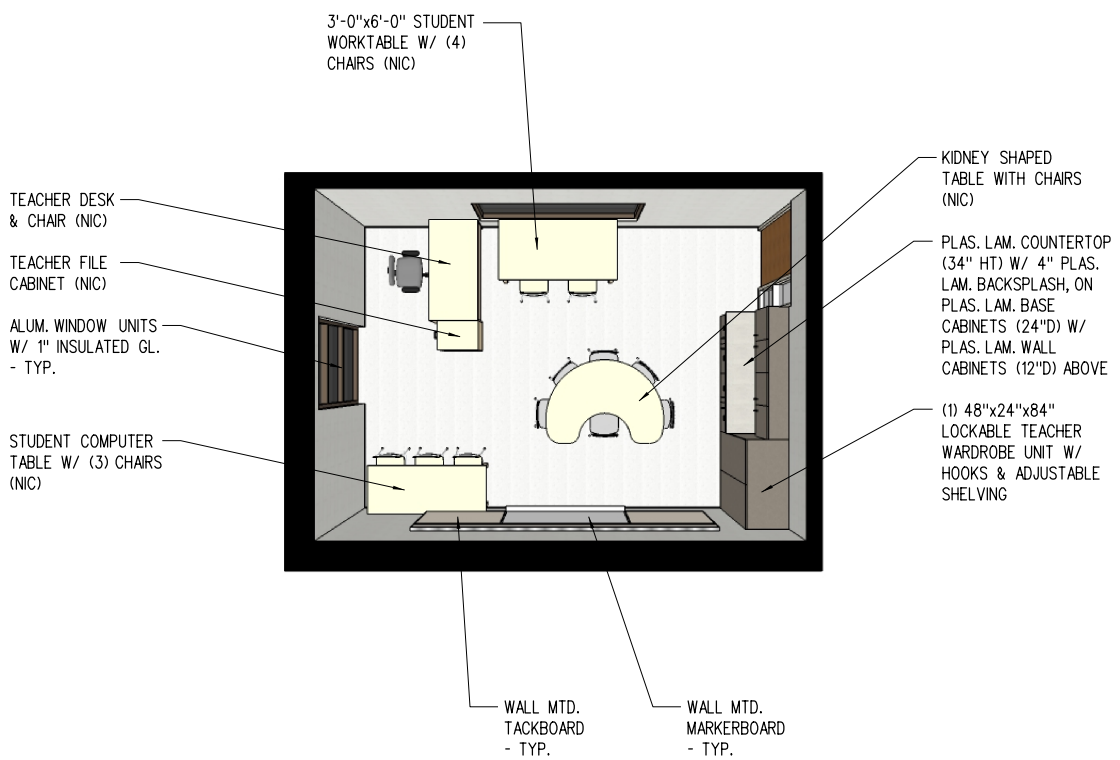


FLOOR PLAN



3-7.01

Reading Recovery-A



PERSPECTIVE

NS

3-7.03

Reading Recovery-B

	Unit Area (NSF)	Qty	Total Area (NSF)
Actual	307	1	307

Design Occupancy

1 Instructor + 6 Students

Typical Room Dimensions (Feet)

19.3 x 15.9

Built-In Casework

- Lockable base cabinets (30"H) & wall cabinets (12"D) with plas. lam. countertop & back splash
- 1 48"x24"x84" Lockable Teacher wardrobe unit w/ hooks and adjustable shelves

Room Finishes

Ceiling	2'x2' AC.T.
Walls	Painted CMU
Casework	Plastic Laminate
Horizontal Surfaces	Plastic Laminate
Floor	VCT
Floor Base	Rubber

Visual Display

- 6 Markerboard (in linear feet) - Main Teaching Space
- 4 Tackboard (in linear feet) - Main Teaching Space
- 4 Tackboard (in linear feet) - Main Teaching Space
- 14 12" Tackboard (in linear feet) - Accessory Teaching Space

Furniture and Equipment (Not in Contract)

- Teacher desk and chair
- 1 Student worktable and chairs
- 1 2-drawer teacher file cabinet
- 1 Student computer table with 3 chairs
- 1 Kidney shaped table with teacher chair and 5 student chairs
- Pencil Sharpener

Technology

- 1 Wall Mounted 65"Wx49"H Smartboard at main teaching space
- 1 Power, Data and Auxiliary Connections to Teacher Station
- 1 Telephone (NIC) - Outlet Provided
- 1 Student Outlet at computer table

Plumbing, Mechanical and Electrical Systems

- Electrical outlets conveniently located
- Analog Clock
- Ceiling Mounted Speaker

Lighting

- Access to Natural Daylight (Windows)
- Fluorescent Lighting
- Dual Level Light Switches

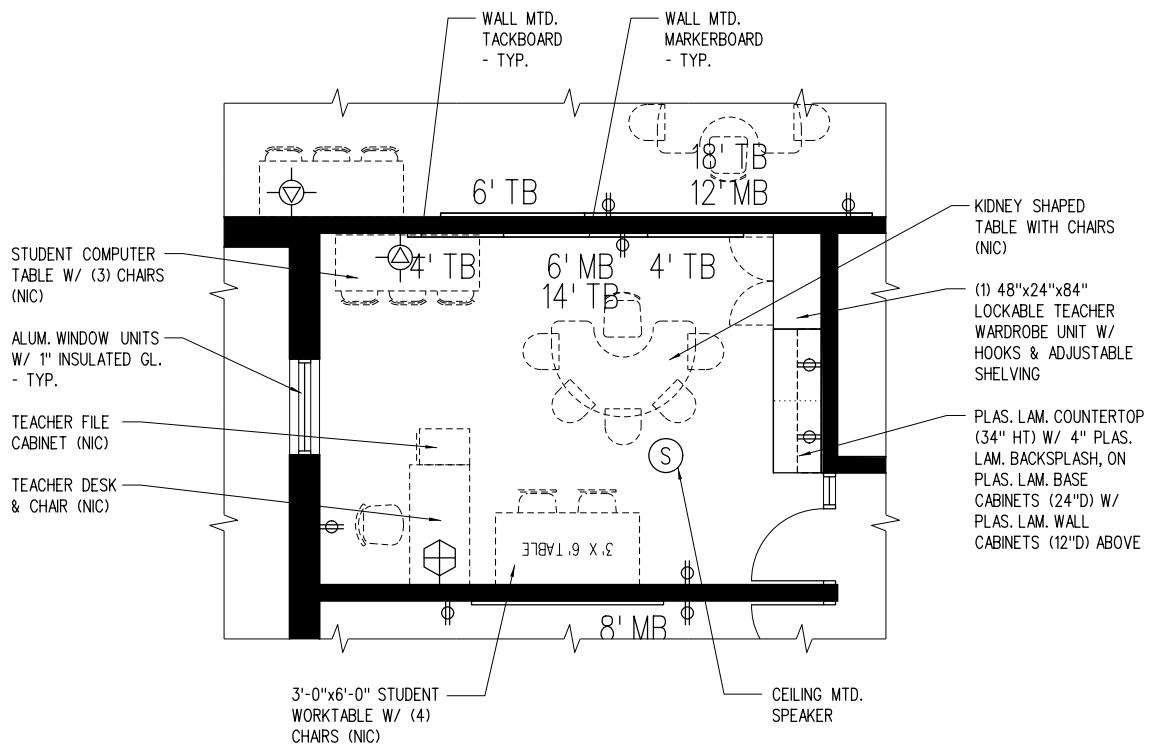
Other Considerations

- Black-out shades at exterior windows for interior lighting control

Notes:

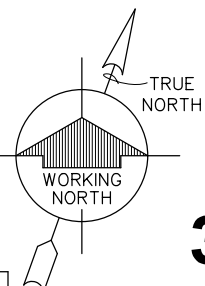
3-8.00

Reading Recovery-B



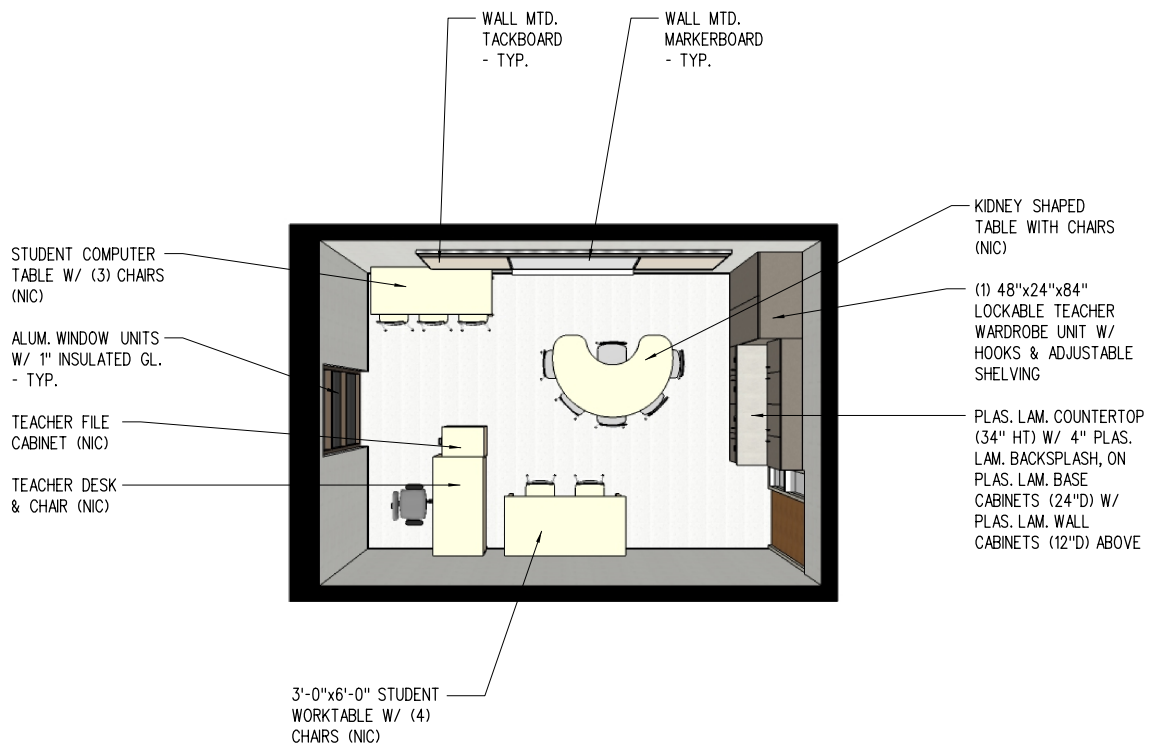
FLOOR PLAN

1/8" = 1'-0"



3-8.01

Reading Recovery-B



PERSPECTIVE

NS

3-8.03

Reading-A (Existing)

	Unit Area (NSF)	Qty	Total Area (NSF)
Actual	268	1	268

Design Occupancy

1 Instructor + 4-6 Students

Typical Room Dimensions (Feet)

13.0 x 20.6

Built-In Casework

Plas. lam. countertop (30"H) on open plas. lam. base cabinets with adj. plas. lam. shelves

Room Finishes

Ceiling	Modify Existing
Walls	Painted CMU
Casework	Plastic Laminate
Horizontal Surfaces	Plastic Laminate
Floor	VCT
Floor Base	Rubber

Visual Display

- 6 Markerboard (in linear feet) - Accessory Teaching Space
- 4 Tackboard (in linear feet) - Main Teaching Space
- 4 Tackboard (in linear feet) - Accessory Teaching Space
- 4 Tackboard (in linear feet) - Accessory Teaching Space
- 6 Tackboard (in linear feet) - Accessory Teaching Space
- 14 12" Tackboard (in linear feet) - Accessory Teaching Space

Furniture and Equipment (Not in Contract)

- 1 Student worktable and chairs
Teacher desk and chair
- 1 2-drawer teacher file cabinet
- 1 Student computer table with 3 chairs
- 1 Kidney shaped table with teacher chair and 5 student chairs
Pencil Sharpener

Technology

- 1 Wall Mounted 65"Wx49"H Smartboard at main teaching space
- 1 Power, Data and Auxiliary Connections to Teacher Station
- 1 Telephone (NIC) - Outlet Provided
- 1 Student Outlet at computer table

Plumbing, Mechanical and Electrical Systems

Electrical outlets conveniently located
Analog Clock
Ceiling Mounted Speaker

Lighting

Access to Natural Daylight (Windows)
Fluorescent Lighting
Dual Level Light Switches

Other Considerations

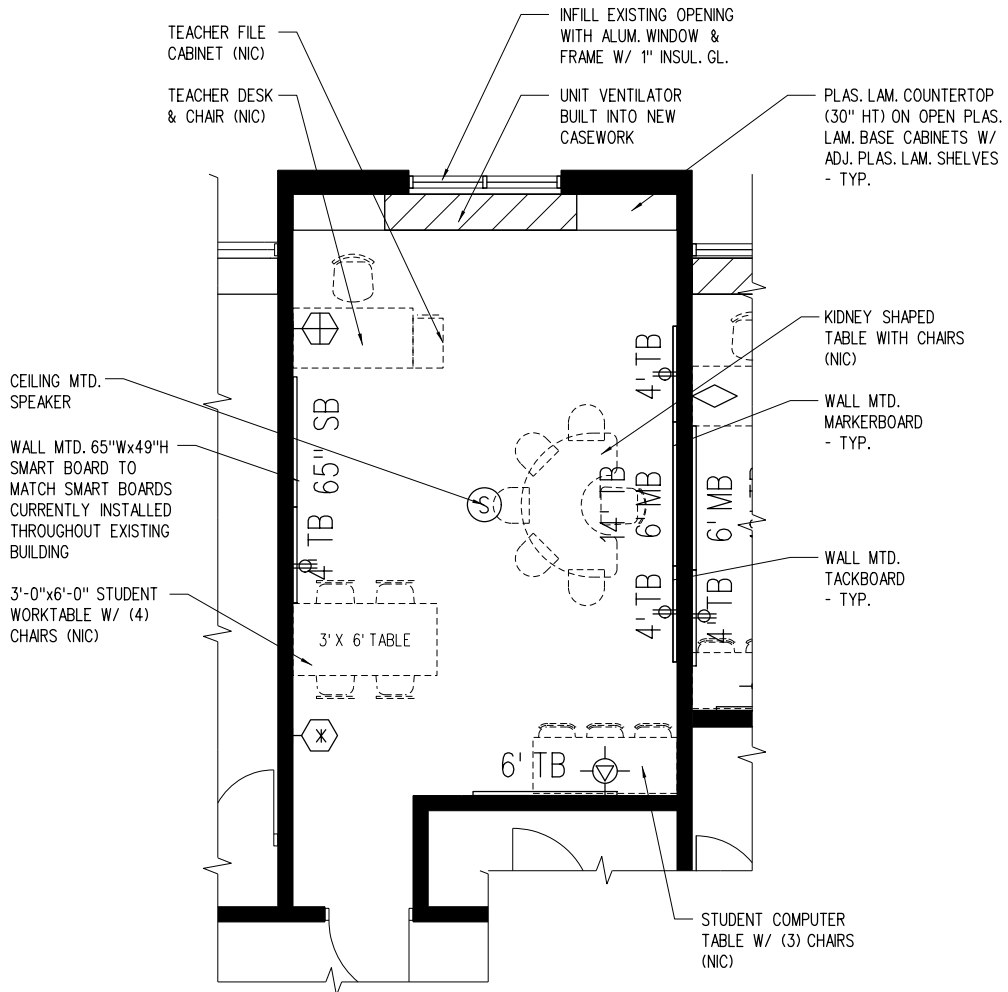
Notes:

Located in portion of existing classroom. Modify existing ceiling grid and lighting to accommodate the new space.

Existing door opening to be infilled with aluminum window unit.

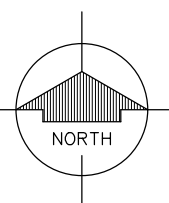
3-9.00

Reading-A (Existing)



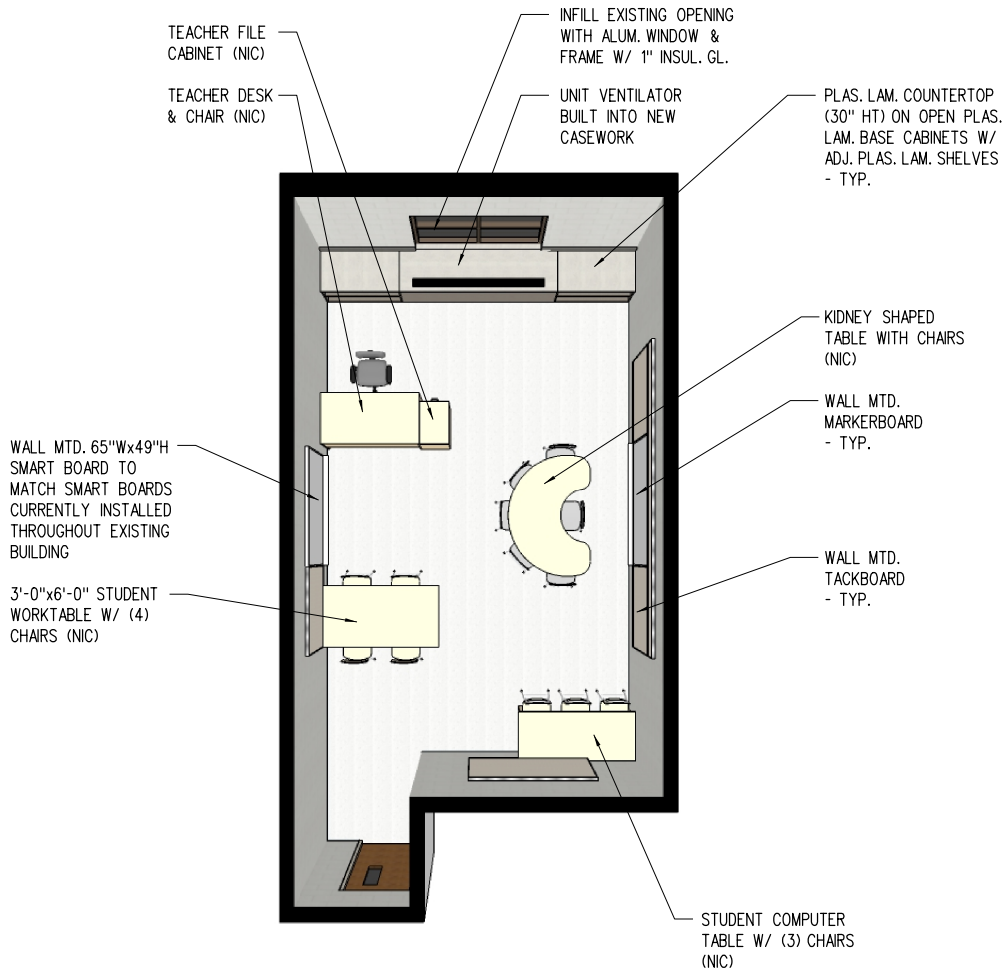
FLOOR PLAN

1/8" = 1'-0"



3-9.01

Reading-A (Existing)



PERSPECTIVE

NS

3-9.03

Reading-B (Existing)

	Unit Area (NSF)	Qty	Total Area (NSF)
Actual	424	1	424

Design Occupancy

1 Instructor + 6 Students

Typical Room Dimensions (Feet)

16.0 x **26.5**

Built-In Casework

Plas. lam. countertop (30"H) on open plas. lam. base cabinets with adj. plas. lam. shelves

Room Finishes

Ceiling	Existing to Remain
Walls	Existing to Remain
Casework	Plastic Laminate
Horizontal Surfaces	Plastic Laminate
Floor	Existing to Remain
Floor Base	Existing to Remain

Visual Display

- 6 Markerboard (in linear feet) - Main Teaching Space
- 6 Markerboard (in linear feet) - Accessory Teaching Space
- 4 Tackboard (in linear feet) - Main Teaching Space
- 4 Tackboard (in linear feet) - Accessory Teaching Space
- 4 Tackboard (in linear feet) - Accessory Teaching Space
- 6 Tackboard (in linear feet) - Accessory Teaching Space
- 14 12" Tackboard (in linear feet) - Accessory Teaching Space

Furniture and Equipment (Not in Contract)

- Teacher desk and chair
- 1 2-drawer teacher file cabinet
- 1 Student computer table with 3 chairs
- 1 Kidney shaped table with teacher chair and 5 student chairs
- Pencil Sharpener

Technology

- 1 Power, Data and Auxiliary Connections to Teacher Station
- 1 Telephone (NIC) - Outlet Provided
- 1 Student Outlet at computer table

Plumbing, Mechanical and Electrical Systems

- Electrical outlets conveniently located
- Analog Clock
- Ceiling Mounted Speaker

Lighting

- Access to Natural Daylight (Windows)
- Fluorescent Lighting
- Dual Level Light Switches

Other Considerations

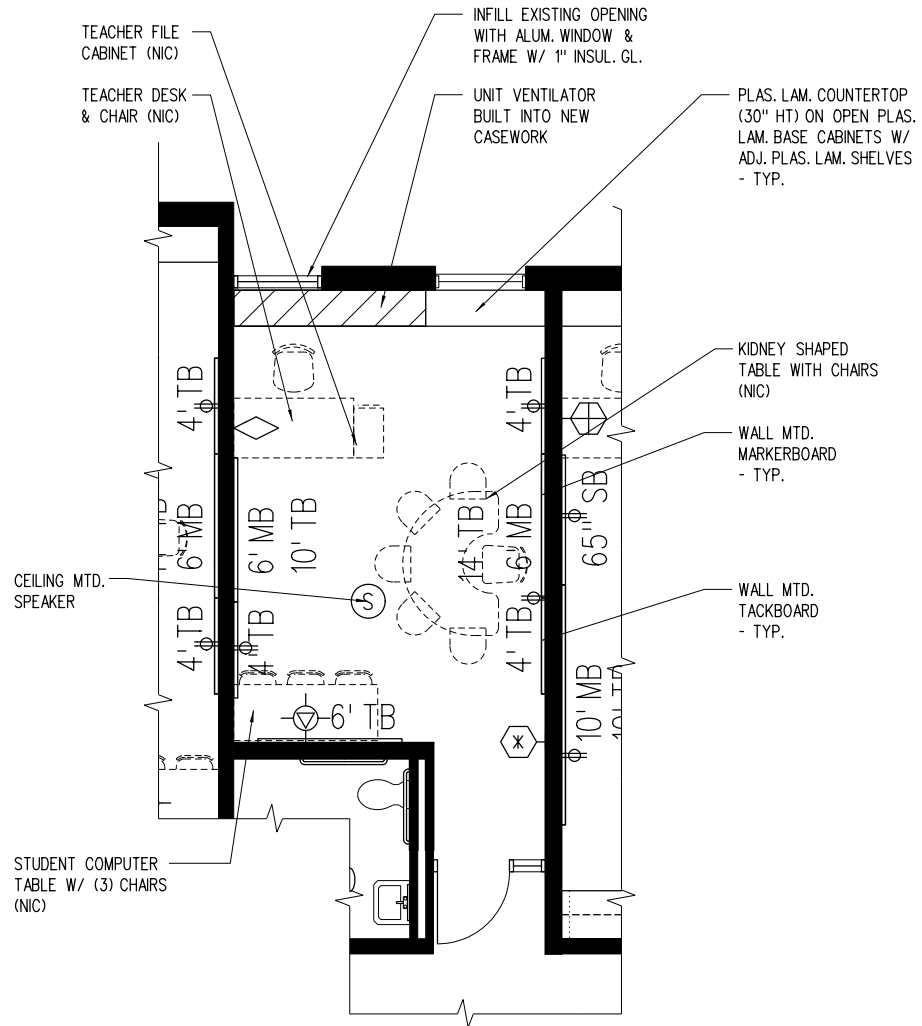
Notes:

Located in portion of existing classroom. Modify existing ceiling grid and lighting to accommodate the new space.

Existing door opening to be infilled with aluminum window unit.

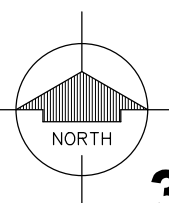
3-10.00

Reading-B (Existing)



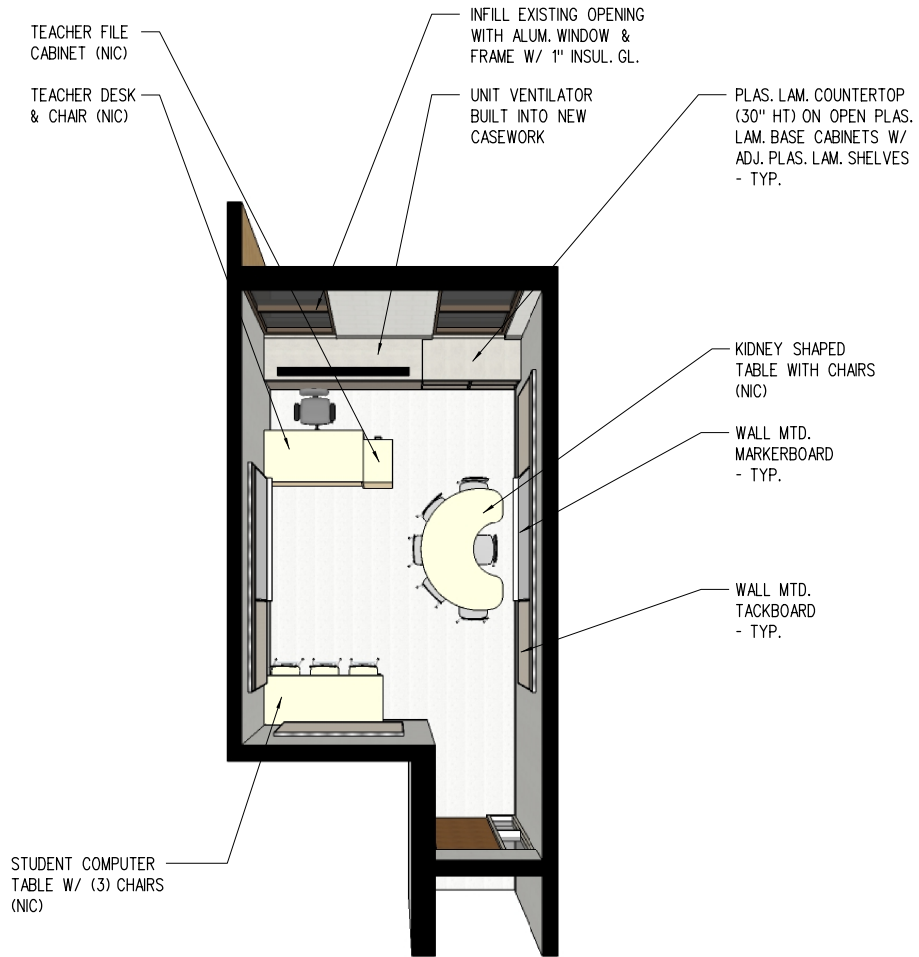
FLOOR PLAN

1/8" = 1'-0"



3-10.01

Reading-B (Existing)



PERSPECTIVE

NS

3-10.03

Speech-A

	Unit Area (NSF)	Qty	Total Area (NSF)
Actual	330	1	330

Design Occupancy

1 Instructor + 4-6 Students

Typical Room Dimensions (Feet)

12.8 x 25.8

Built-In Casework

- Lockable base cabinets (34"H) with plas. lam. countertop & back splash
- 1 48"x24"x84" Lockable Teacher wardrobe unit w/ hooks and adjustable shelves
- 1 48"x24"x84" Lockable Teacher storage unit w/ adjustable shelves

Visual Display

- 6 Markerboard (in linear feet) - Main Teaching Space
- 6 Markerboard (in linear feet) - Accessory Teaching Space
- 6 Tackboard (in linear feet) - Main Teaching Space
- 4 Tackboard (in linear feet) - Accessory Teaching Space
- 12 12" Tackboard (in linear feet) - Accessory Teaching Space

Furniture and Equipment (Not in Contract)

- Teacher desk and chair
- 1 2-drawer teacher file cabinet
- 1 Kidney shaped table with teacher chair and 5 student chairs
- Pencil Sharpener

Technology

- 1 Power, Data and Auxiliary Connections to Teacher Station
- 1 Telephone (NIC) - Outlet Provided
- 1 Student Outlet at computer table

Plumbing, Mechanical and Electrical Systems

- Electrical outlets conveniently located
- Analog Clock
- Ceiling Mounted Speaker

Lighting

- Access to Natural Daylight via skylights/solartube
- Fluorescent Lighting
- Dual Level Light Switches

Other Considerations

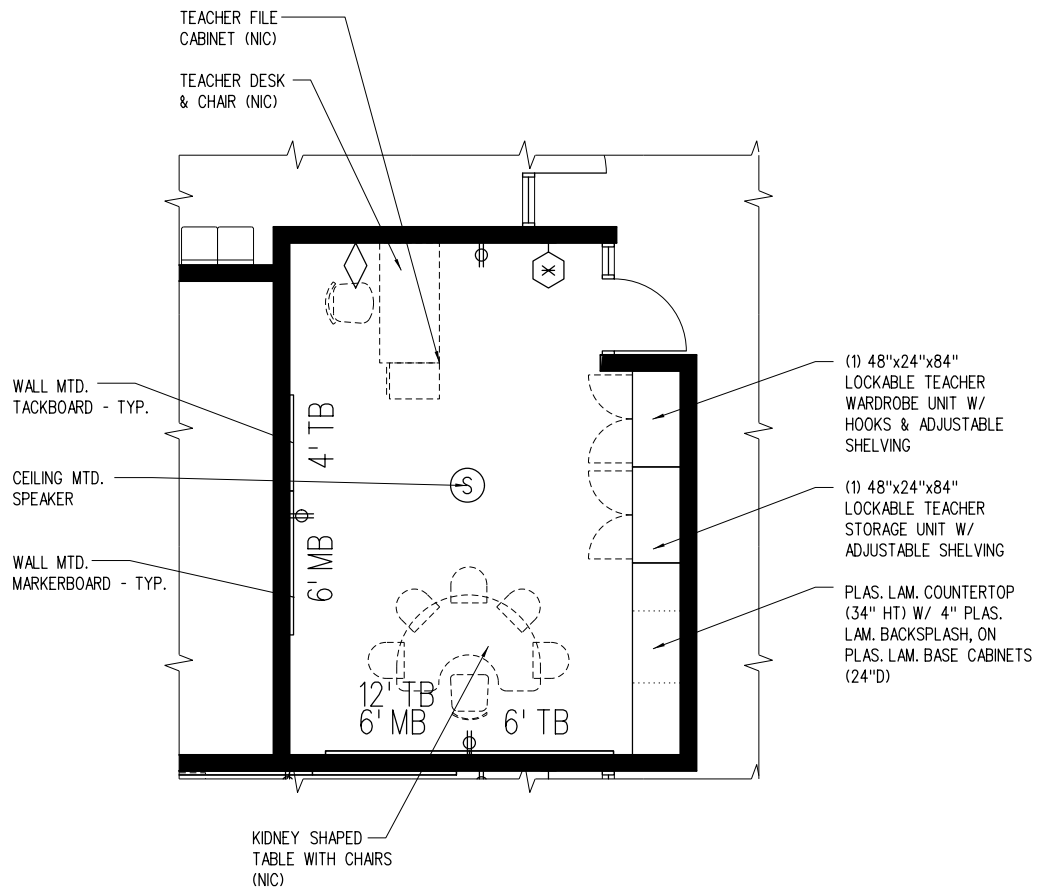
Room Finishes

Ceiling	2'x2' AC.T.
Walls	Painted CMU
Casework	Plastic Laminate
Horizontal Surfaces	Plastic Laminate
Floor	VCT
Floor Base	Rubber

Notes:

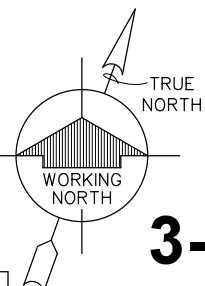
3-11.00

Speech-A



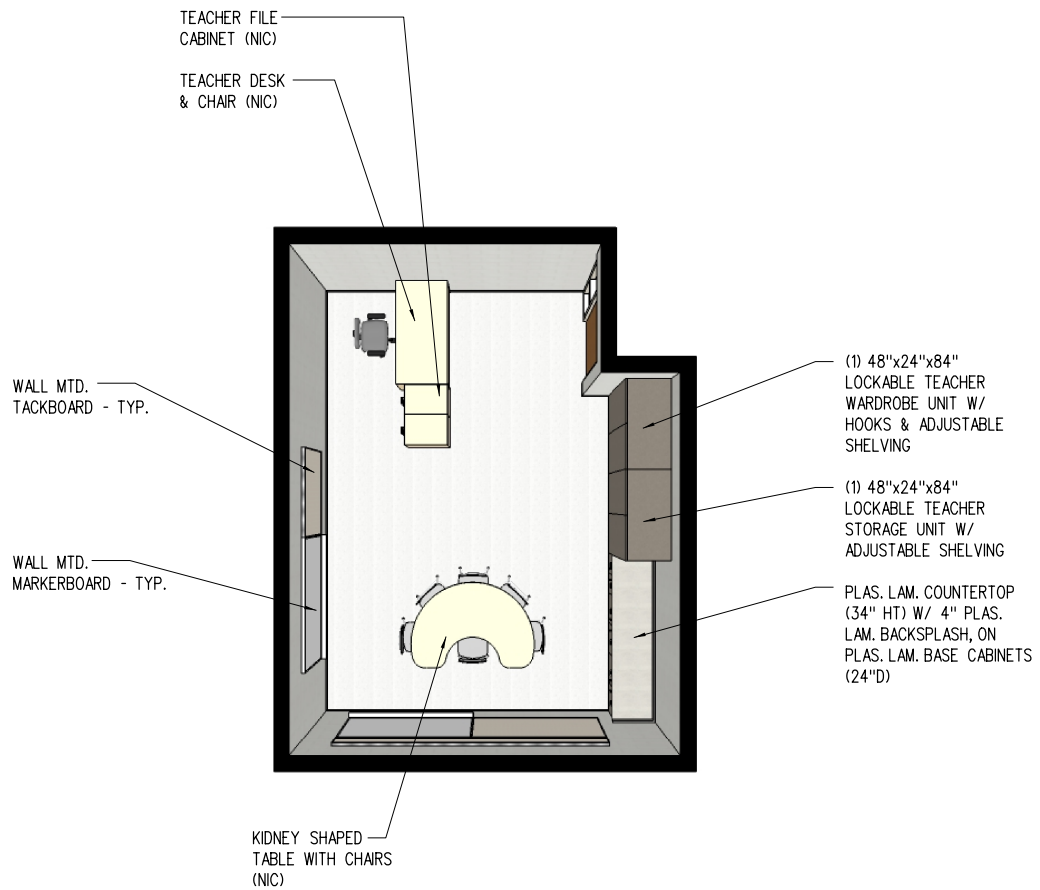
FLOOR PLAN

1/8" = 1'-0"



3-11.01

Speech-A



PERSPECTIVE

NS

3-11.03

Speech-B (Existing)

	Unit Area (NSF)	Qty	Total Area (NSF)
Actual	338	1	338

Design Occupancy

1 Instructor + 4-6 Students

Typical Room Dimensions (Feet)

17.0 x 19.9

Built-In Casework

- 1 48"x24"x84" Lockable Teacher wardrobe unit w/ hooks and adjustable shelves
- 1 48"x24"x84" Lockable Teacher storage unit w/ adjustable shelves

Visual Display

- 6 Markerboard (in linear feet) - Main Teaching Space
- 6 Markerboard (in linear feet) - Accessory Teaching Space
- 6 Tackboard (in linear feet) - Main Teaching Space
- 4 Tackboard (in linear feet) - Accessory Teaching Space
- 12 12" Tackboard (in linear feet) - Accessory Teaching Space

Furniture and Equipment (Not in Contract)

- Teacher desk and chair
- 1 2-drawer teacher file cabinet
- 1 Kidney shaped table with teacher chair and 5 student chairs
- Pencil Sharpener

Technology

- 1 Power, Data and Auxiliary Connections to Teacher Station
- 1 Telephone (NIC) - Outlet Provided
- 1 Student Outlet at computer table

Plumbing, Mechanical and Electrical Systems

- Electrical outlets conveniently located
- Analog Clock
- Ceiling Mounted Speaker

Lighting

- Access to Natural Daylight (Windows)
- Fluorescent Lighting
- Dual Level Light Switches

Other Considerations

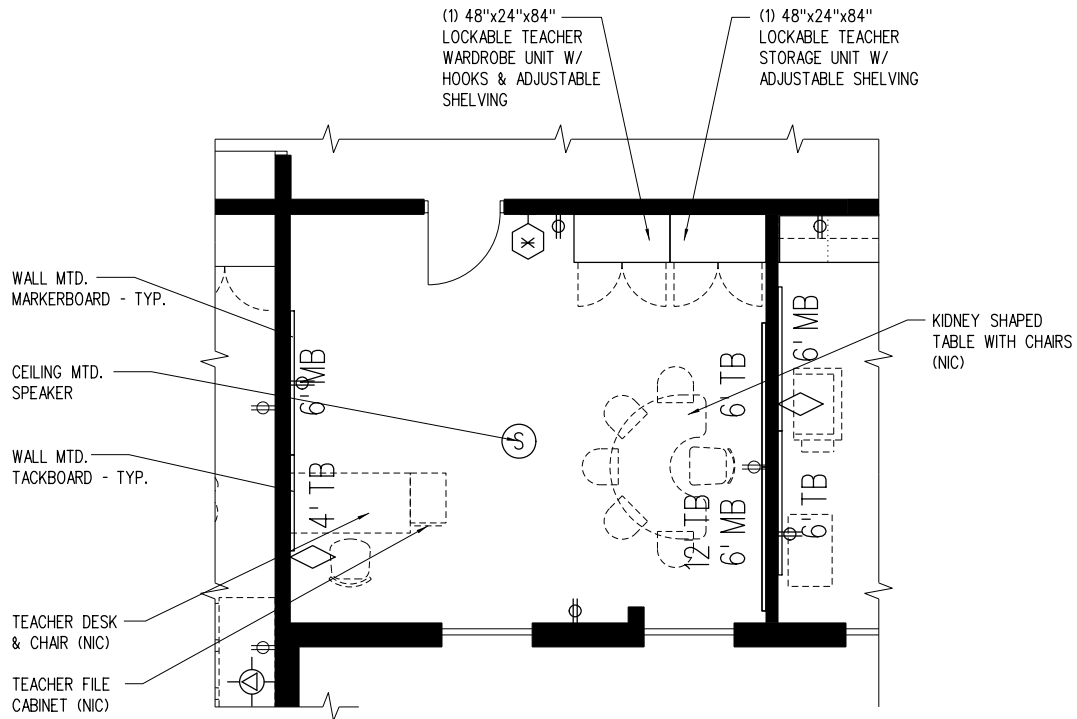
Room Finishes

Ceiling	Existing to Remain
Walls	Existing to Remain
Casework	Plastic Laminate
Horizontal Surfaces	Plastic Laminate
Floor	VCT
Floor Base	Rubber

Notes:

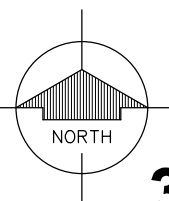
3-12.00

Speech-B (Existing)



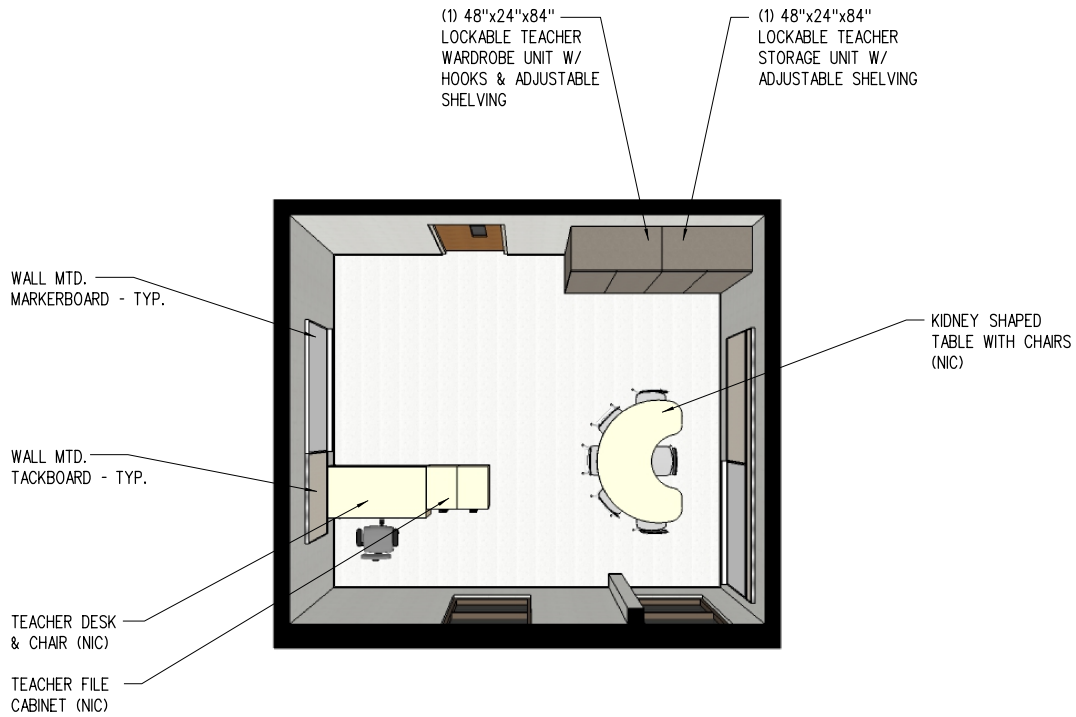
FLOOR PLAN

1/8" = 1'-0"



3-12.01

Speech-B (Existing)



PERSPECTIVE

NS

3-12.03

Social Worker

	Unit Area (NSF)	Qty	Total Area (NSF)
Actual	280	1	280

Design Occupancy

1 Instructor + 4-6 Students

Typical Room Dimensions (Feet)

13.1 x **21.4**

Built-In Casework

None

Room Finishes

Ceiling	2'x2' AC.T.
Walls	Painted CMU
Casework	Plastic Laminate
Horizontal Surfaces	Plastic Laminate
Floor	VCT
Floor Base	Rubber

Visual Display

- 6 Markerboard (in linear feet) - Main Teaching Space
- 4 Tackboard (in linear feet) - Accessory Teaching Space
- 4 Tackboard (in linear feet) - Accessory Teaching Space

Furniture and Equipment (Not in Contract)

- Teacher desk and chair
- 1 2-drawer teacher file cabinet
- 1 Student worktable and chairs
- Pencil Sharpener
- 2 Portable Wardrobe Units

Technology

- 1 Power, Data and Auxiliary Connections to Teacher Station
- 1 Telephone (NIC) - Outlet Provided
- 1 Student Outlet at computer table

Plumbing, Mechanical and Electrical Systems

- Electrical outlets conveniently located
- Analog Clock
- Ceiling Mounted Speaker

Lighting

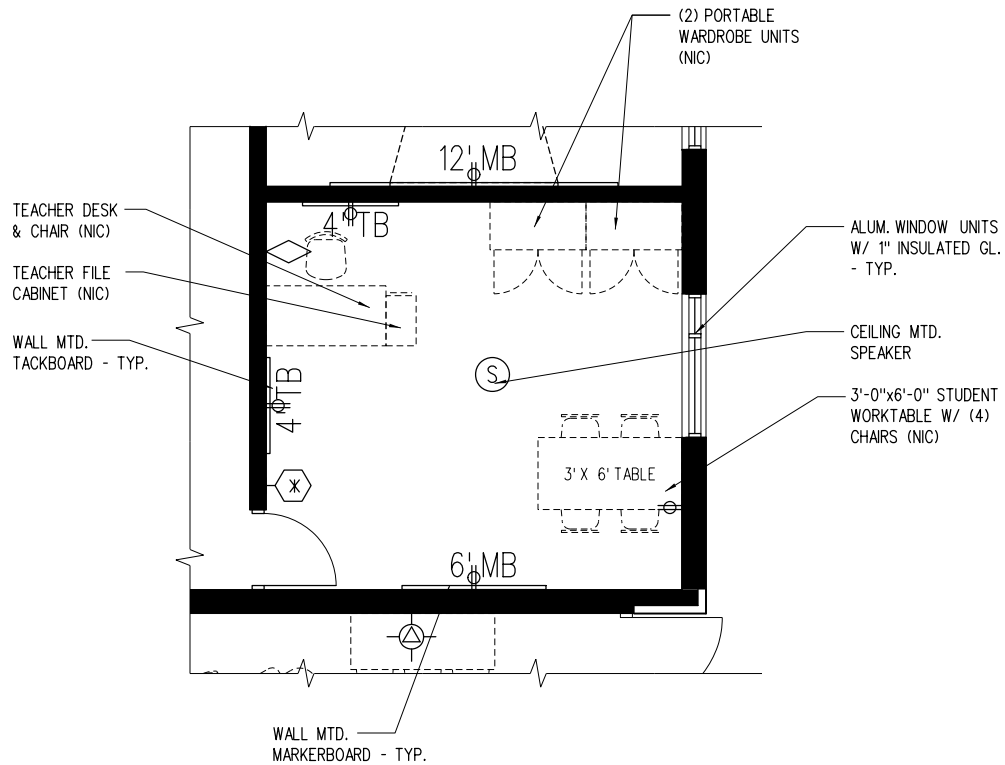
- Access to Natural Daylight (Windows)
- Fluorescent Lighting
- Dual Level Light Switches

Other Considerations

Notes:

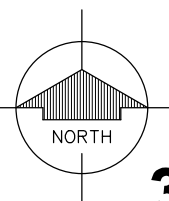
3-13.00

Social Worker



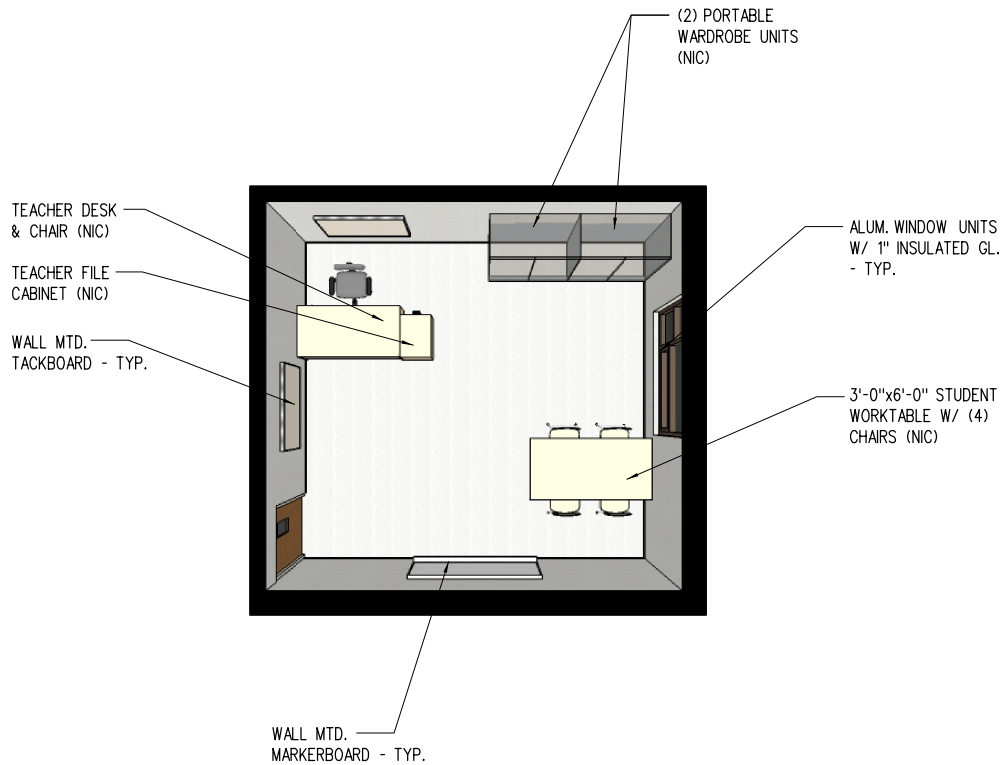
FLOOR PLAN

1/8" = 1'-0"



3-13.01

Social Worker



PERSPECTIVE

NS

3-13.03