



# PERU ELEMENTARY SCHOOL DISTRICT 124

Peru, LaSalle County, Illinois

## Addition and Renovation Northview Elementary School Design Development Manual

Healy | Bender Project No. 10-3113-145

**Tab 2: Sheet 2-6.00 through Sheet 2-13.01**

April 18, 2014



## 3rd Grade Classroom (Existing)

	Unit Area (NSF)	Qty	Total Area (NSF)
<b>Actual</b>	<b>958</b>	<b>5</b>	<b>4,790</b>

### Design Occupancy

1 Instructor + 24 Students

Typical Room Dimensions (Feet)

**27.0 x 35.5**

### Built-In Casework

- 1 Plas. lam. countertop (30"Ht) on lockable & open plas. lam. base cabinets (18"D) w/ adjustable shelves
- 1 Plas. lam. countertop (34"Ht) w/ 4" plas. lam. backsplash, on lockable plas. lam. base cabinets (24"D) w/ adjustable shelves
- 1 48"x24"x78" Lockable plas. lam. teacher wardrobe unit w/ hooks & adjustable shelves
- 1 48"x24"x78" Lockable plas. lam. teacher storage unit w/ adjustable shelves

### Room Finishes

<b>Ceiling</b>	1'x1' perforated metal tile
<b>Walls</b>	SGT & painted CMU
<b>Casework</b>	Plastic Laminate
<b>Horizontal Surfaces</b>	Plastic Laminate
<b>Floor</b>	VCT
<b>Floor Base</b>	SGT & Rubber

### Visual Display

- 12 Markerboard (in linear feet) - Main Teaching Space
- 16 Markerboard (in linear feet) - Accessory Teaching Space
- 4 Tackboard (in linear feet) - Main Teaching Space
- 4 Tackboard (in linear feet) - Main Teaching Space
- 4 Tackboard (in linear feet) - Accessory Teaching Space
- 4 12" Tackboard (in linear feet) - Main Teaching Space
- 8 12" Tackboard (in linear feet) - Main Teaching Space
- 4 12" Tackboard (in linear feet) - Accessory Teaching Space
- 16 12" Tackboard (in linear feet) - Accessory Teaching Space
- Wall to wall Tackboard - Accessory Teaching Space

### Notes:

Remove existing plumbing fixtures in classroom toilet room and prepare room for conversion to additional storage closet (22 SF).

At Classroom 3-C remove existing chalkboard and install new markerboards and tackboards

The (2) base cabinets directly behind teacher's desk are to have lockable doors.

Tackboards and markerboards to be mounted higher than lower grade levels (30").

### Furniture and Equipment (Not in Contract)

- Student desks and chairs
- Teacher desk and chair
- 1 2-drawer teacher file cabinet
- 1 Student computer table with 3 chairs
- 1 Kidney shaped table with teacher chair and 5 student chairs
- Pencil Sharpener

### Technology

- 1 Wall Mounted 65"Wx49"H Smartboard at main teaching space (NIC)
- 1 Power, Data and Auxiliary Connections to Teacher Station
- 1 Telephone (NIC) - Outlet Provided
- 1 Student Outlet at computer table
- Wall mounted projector (NIC) - provide projector outlet at teaching wall.

### Plumbing, Mechanical and Electrical Systems

- Electrical outlets conveniently located to supplement existing outlets
- (2) quad outlets on counter along corridor wall for iPads.
- Analog Clock
- Ceiling Mounted Speaker
- Unit Ventilator on exterior wall

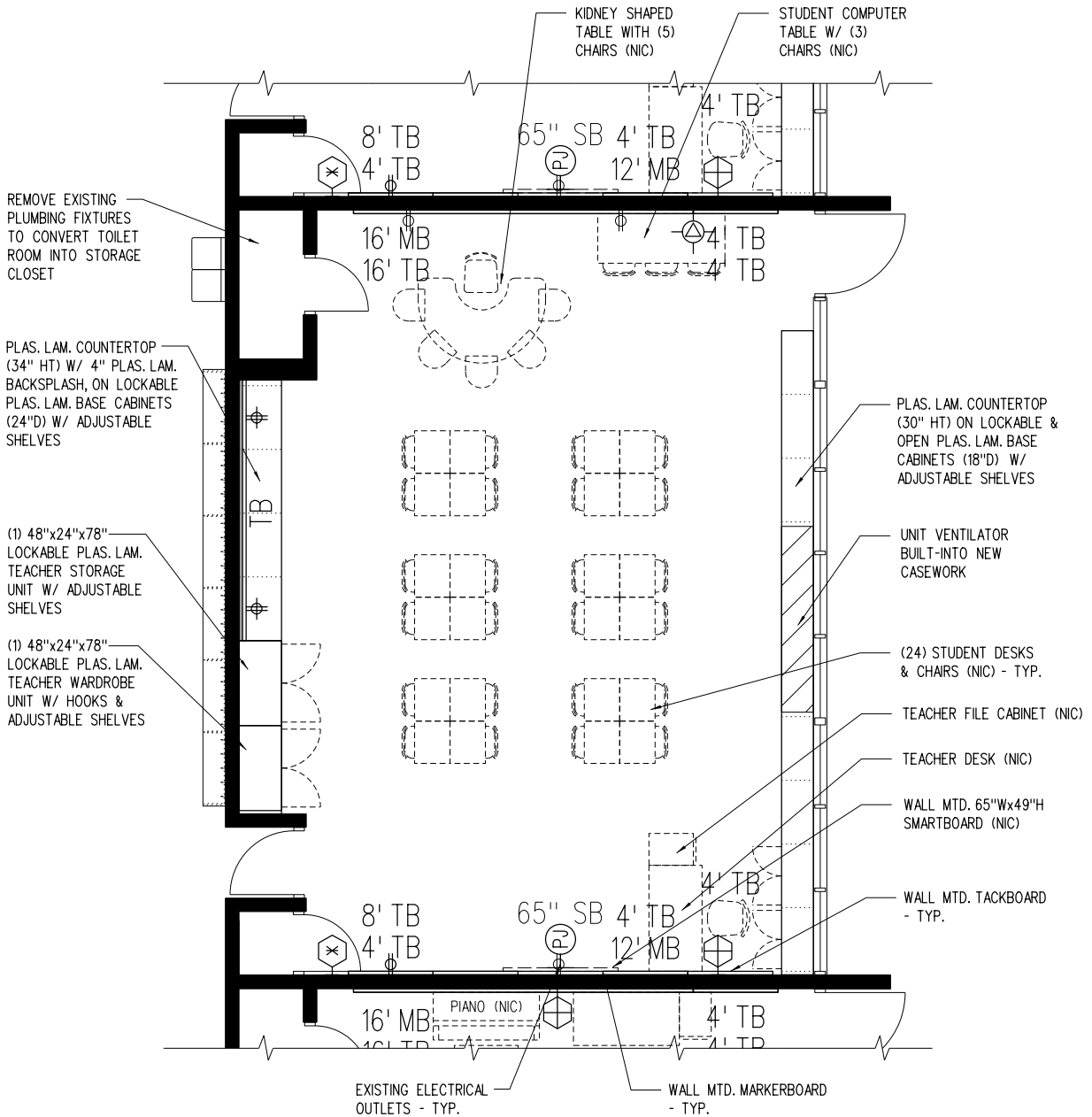
### Lighting

- Access to Natural Daylight (Windows)
- Fluorescent Lighting
- Dual Level Light Switches

### Other Considerations

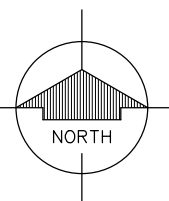
**2-6.00**

### 3rd Grade Classroom (Existing)



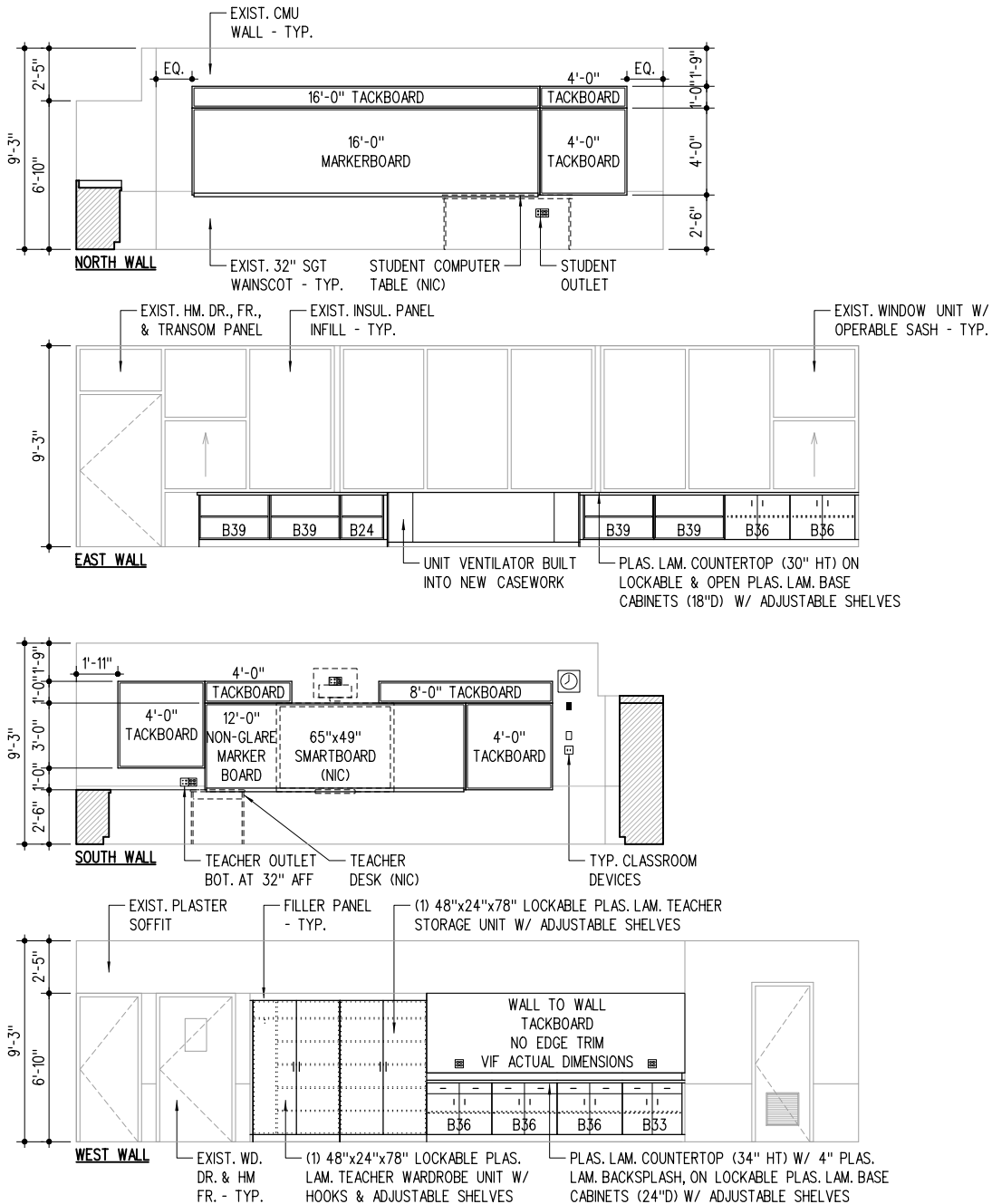
## FLOOR PLAN

1/8" = 1'-0"



# 2-6.01

# 3rd Grade Classroom (Existing)

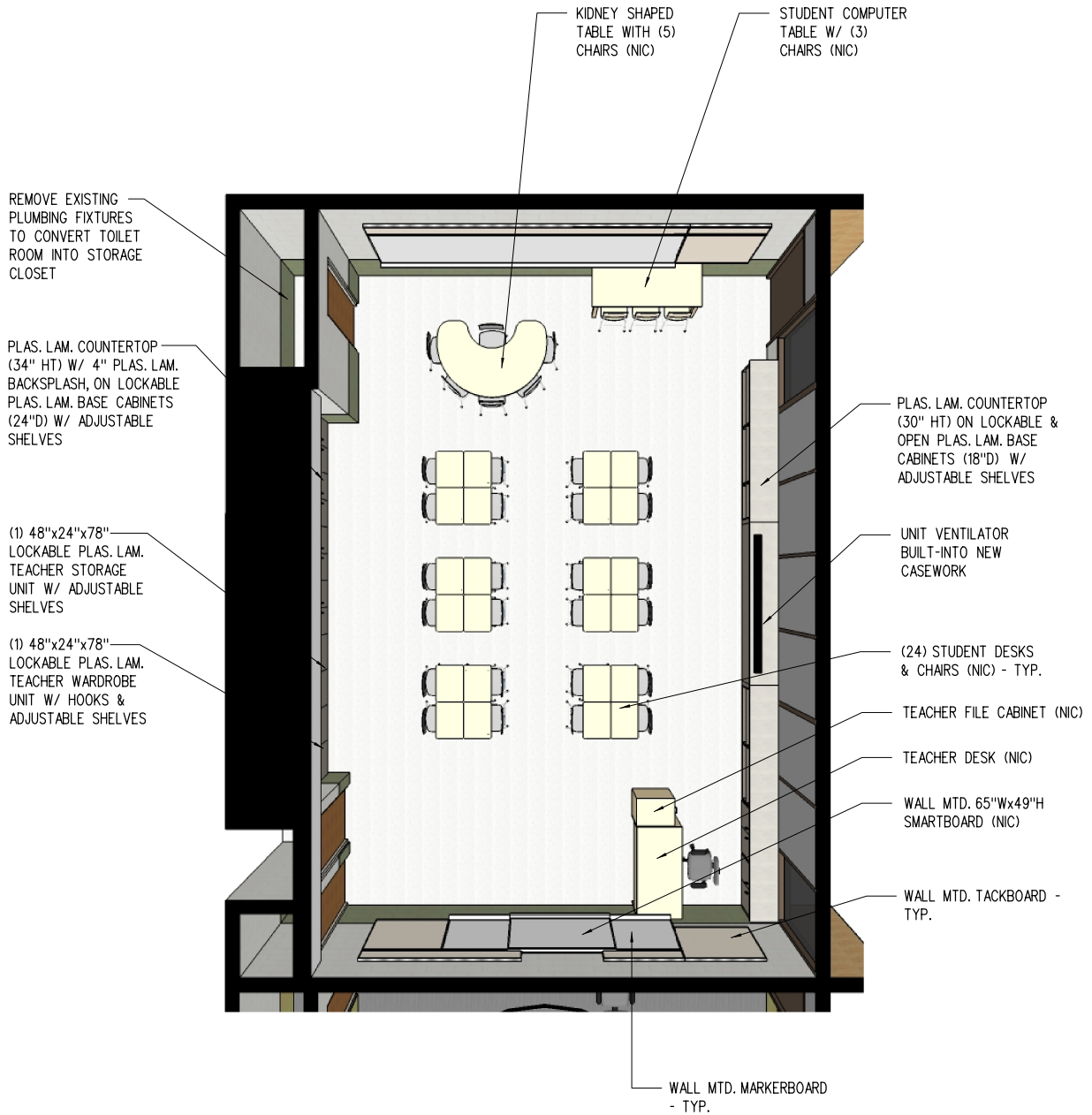


## INTERIOR ELEVATIONS

1/8" = 1'-0" 0 2 4 8 16 24

2-6.02

### 3rd Grade Classroom (Existing)



# PERSPECTIVE

NS

## 2-6.03

## 4th Grade Classroom (Existing)

	Unit Area (NSF)	Qty	Total Area (NSF)
<b>Actual</b>	<b>958</b>	<b>5</b>	<b>4,790</b>

### Design Occupancy

1 Instructor + 24 Students

Typical Room Dimensions (Feet)

**27.0 x 35.5**

### Built-In Casework

- 1 Plas. lam. countertop (30"Ht) on lockable & open plas. lam. base cabinets (18"D) w/ adjustable shelves
- 1 Plas. lam. countertop (34"Ht) w/ 4" plas. lam. backsplash, on lockable plas. lam. base cabinets (24"D) w/ adjustable shelves
- 1 48"x24"x78" Lockable plas. lam. teacher wardrobe unit w/ hooks & adjustable shelves
- 1 48"x24"x78" Lockable plas. lam. teacher storage unit w/ adjustable shelves

### Room Finishes

<b>Ceiling</b>	1'x1' perforated metal tile
<b>Walls</b>	SGT & painted CMU
<b>Casework</b>	Plastic Laminate
<b>Horizontal Surfaces</b>	Plastic Laminate
<b>Floor</b>	VCT
<b>Floor Base</b>	SGT & Rubber

### Visual Display

- 12 Markerboard (in linear feet) - Main Teaching Space
- 10 Markerboard (in linear feet) - Accessory Teaching Space
- 10 Markerboard (in linear feet) - Accessory Teaching Space
- 4 Tackboard (in linear feet) - Main Teaching Space
- 4 Tackboard (in linear feet) - Main Teaching Space
- 12 Tackboard (in linear feet) - Accessory Teaching Space

### Notes:

Remove existing plumbing fixtures in classroom toilet room and prepare room for conversion to additional storage closet (22 SF).

The (2) base cabinets directly behind teacher's desk are to have lockable doors.

Tackboards and markerboards to be mounted higher than lower grade levels (30").

### Furniture and Equipment (Not in Contract)

- Student desks and chairs
- Teacher desk and chair
- 1 2-drawer teacher file cabinet
- 1 Student computer table with 3 chairs
- 1 Kidney shaped table with teacher chair and 5 student chairs
- Pencil Sharpener

### Technology

- 1 Wall Mounted 65"Wx49"H Smartboard at main teaching space (NIC)
- 1 Power, Data and Auxiliary Connections to Teacher Station
- 1 Telephone (NIC) - Outlet Provided
- 1 Student Outlet at computer table
- Wall mounted projector (NIC) - provide projector outlet at teaching wall.

### Plumbing, Mechanical and Electrical Systems

- Electrical outlets conveniently located to supplement existing outlets
- (2) quad outlets on counter along corridor wall for iPads.
- Analog Clock
- Ceiling Mounted Speaker
- Unit Ventilator on exterior wall

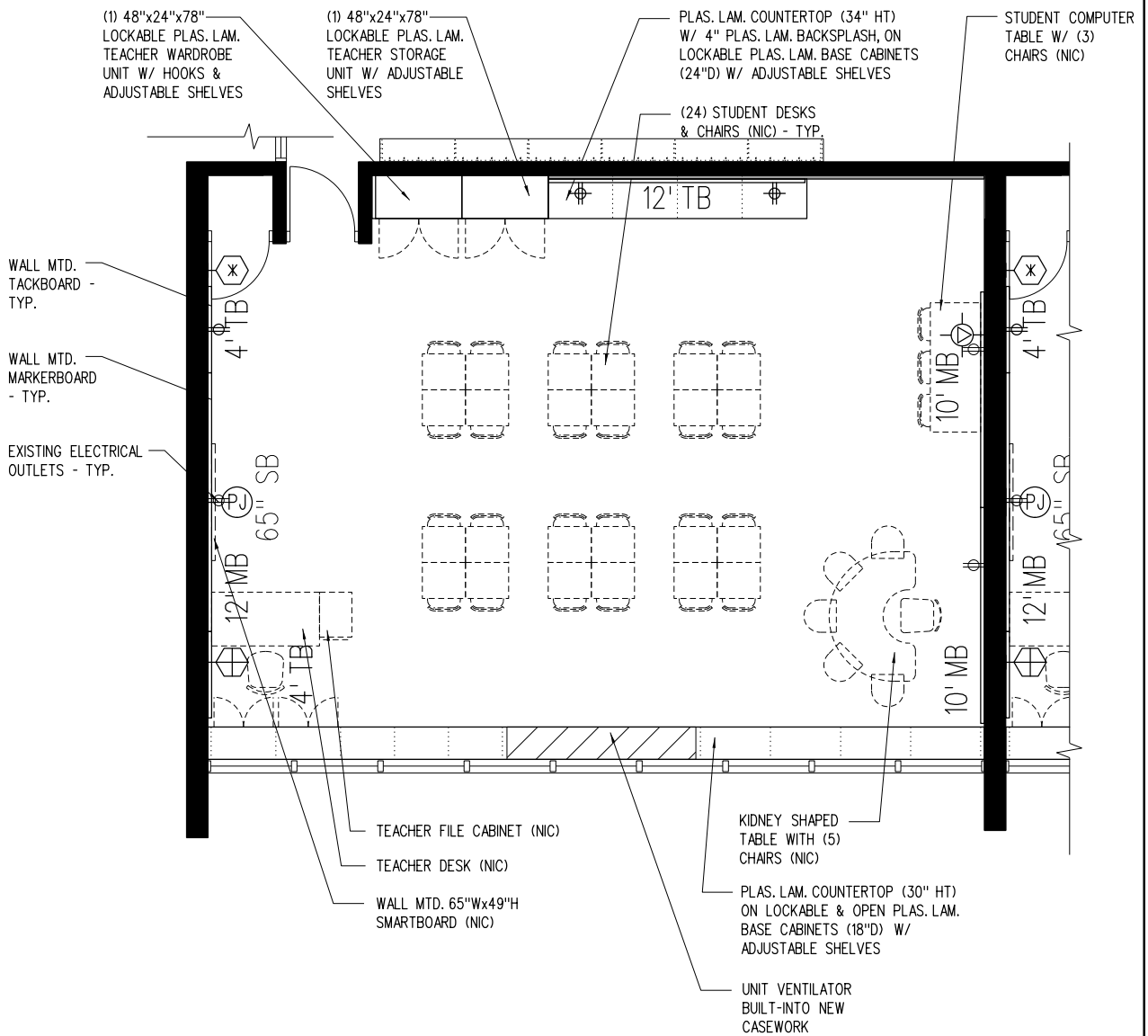
### Lighting

- Access to Natural Daylight (Windows)
- Fluorescent Lighting
- Dual Level Light Switches

### Other Considerations

**2-7.00**

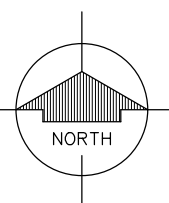
# 4th Grade Classroom (Existing)



## FLOOR PLAN

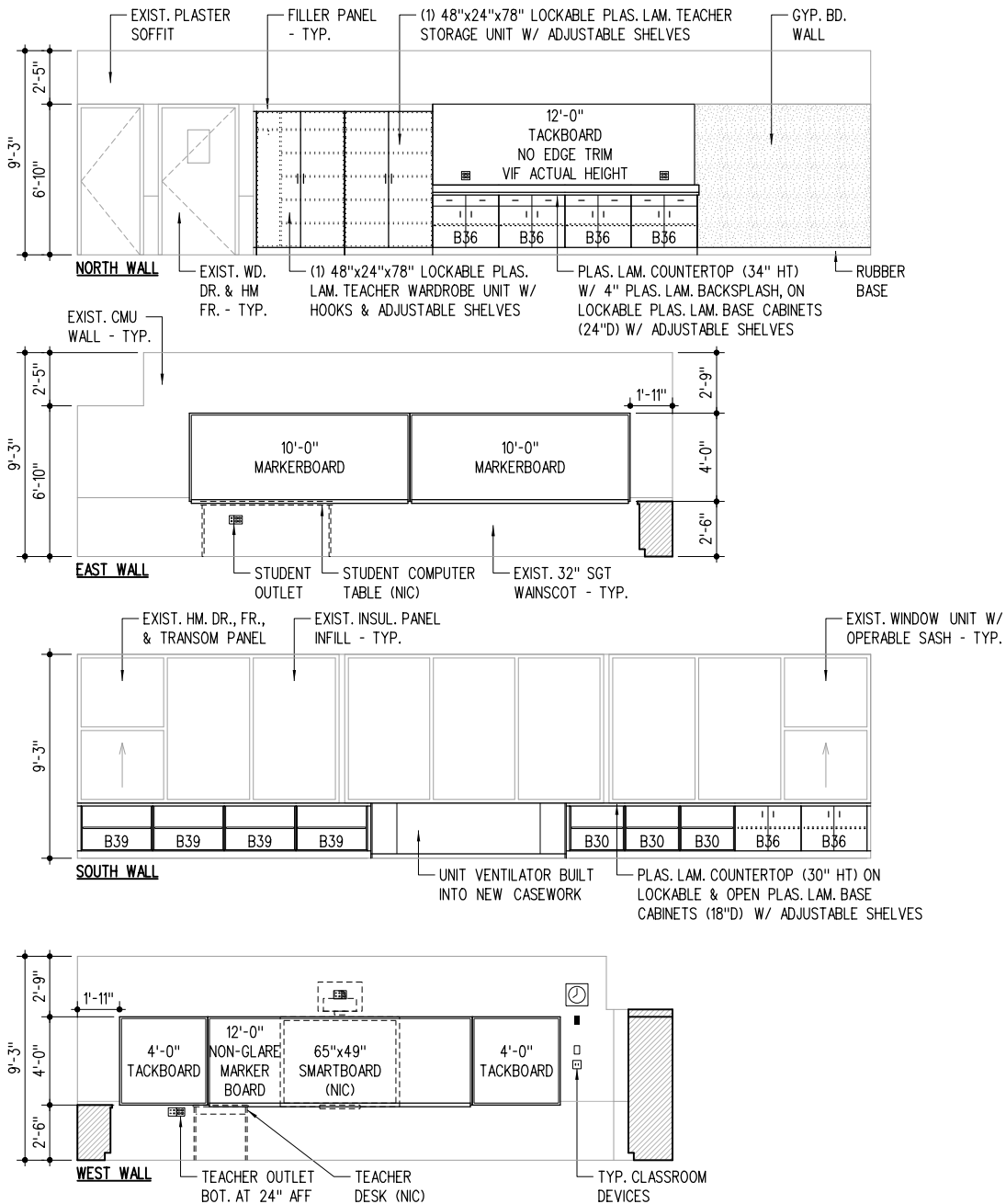
1/8" = 1'-0"

0 2 4 8 16 24



# 2-7.01

4th Grade Classroom (Existing)



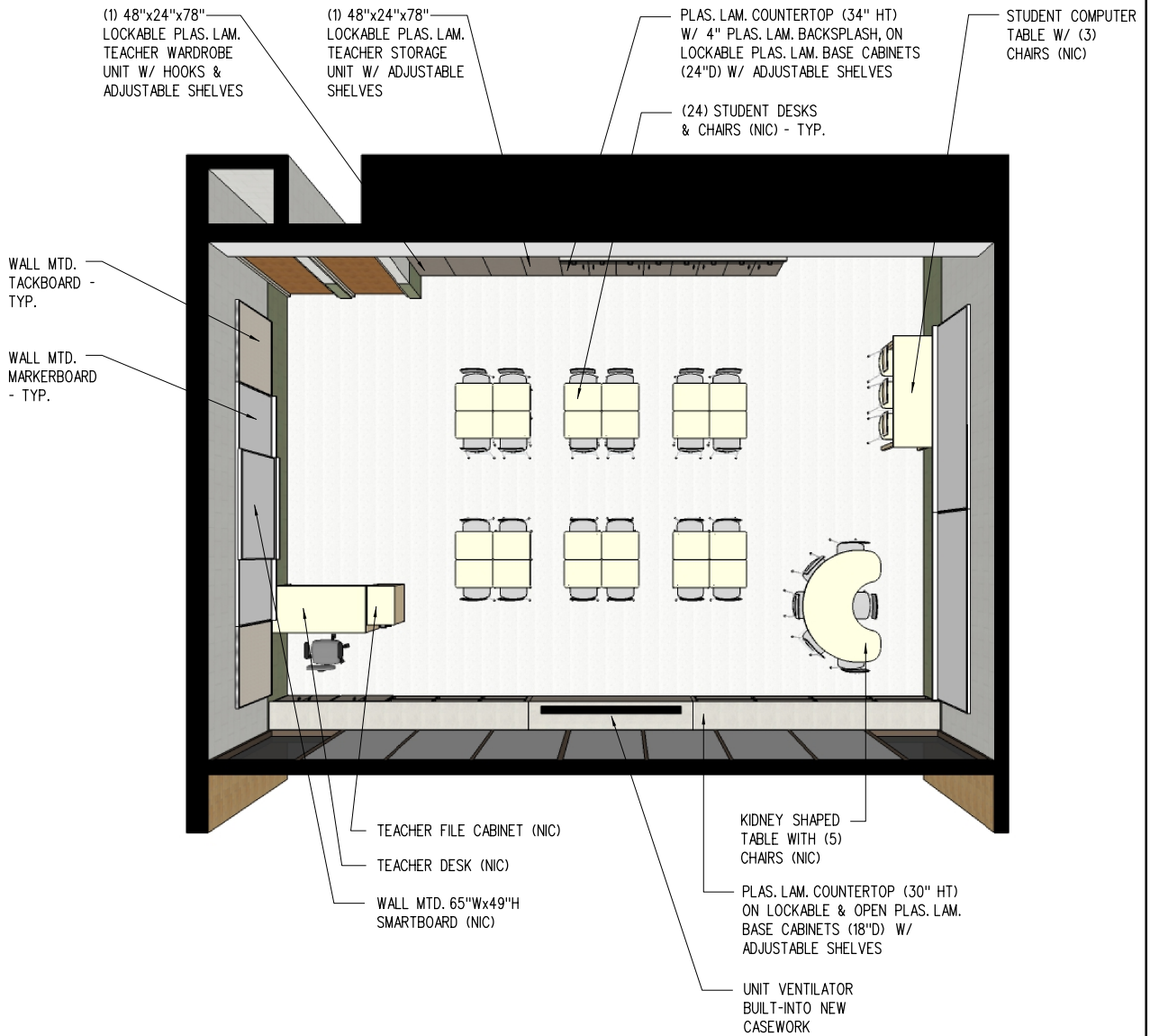
INTERIOR ELEVATIONS



2-7.02



### 4th Grade Classroom (Existing)



# PERSPECTIVE

NS

## 2-7.03

**Team Center-A / Observation**

	Unit Area (NSF)	Qty	Total Area (NSF)
<b>Actual</b>	<b>393</b>	<b>1</b>	<b>393</b>

**Design Occupancy**

8-10 People

Typical Room Dimensions (Feet)

**18.0** x **21.8**

**Built-In Casework**

- 1 Plas. lam. countertop (34"Ht) w/ 4" plas. lam. backsplash, on lockable plas. lam. base cabinets (24"D) w/ lockable plas. lam. wall cabinets (12"D) & adjustable shelves

**Visual Display**

- 8 Markerboard (in linear feet)
- 4 Tackboard (in linear feet)

**Furniture and Equipment (Not in Contract)**

Conference Table and Chairs  
Copier

**Technology**

Power and data outlets at copier and work counter  
Provide projector outlet with duplex electrical and (2) data ports. No HDMI.

**Plumbing, Mechanical and Electrical Systems**

Analog Clock  
Ceiling Mounted Speaker  
Electrical outlets conveniently located

**Lighting**

Access to Natural Daylight (Windows)  
Fluorescent Lighting  
Dual Level Light Switches  
Lighting to be arranged and switched for proper operation of observation window

**Other Considerations**

- 1 Hollow metal frame with 1-way observation glass in-wall between Team Center-A / Observation and adjacent Reading Recovery-A.  
Room darkening shades (NIC)

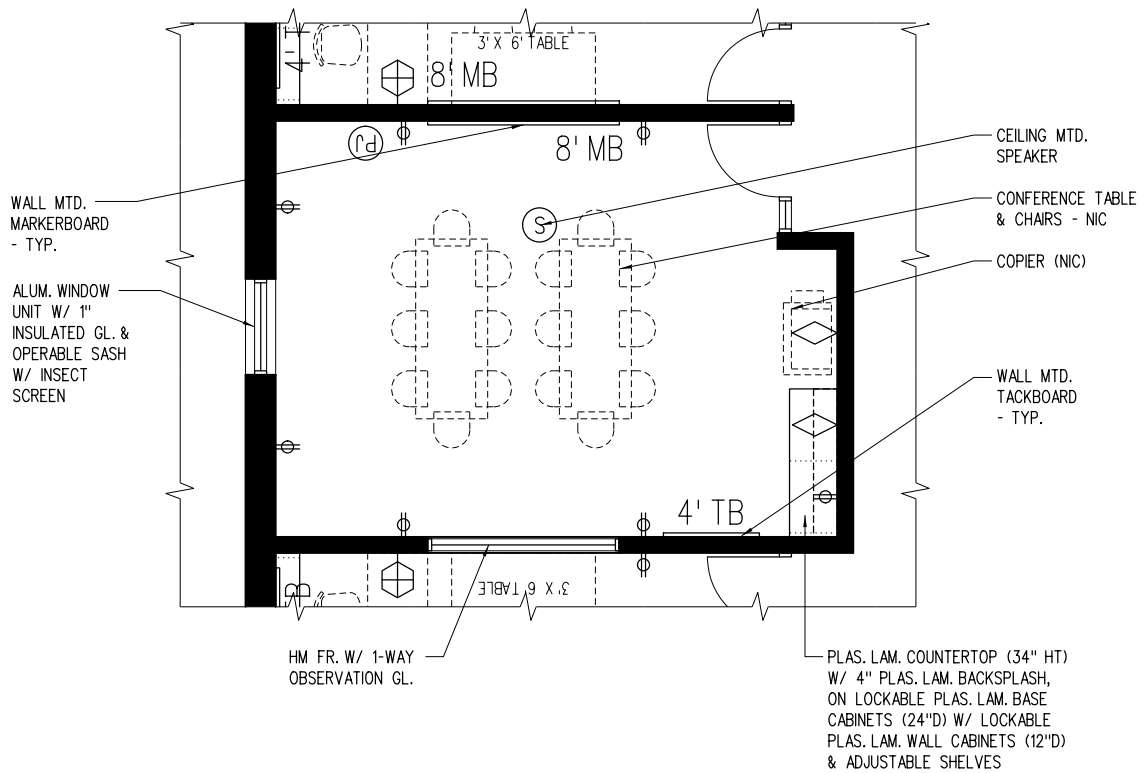
**Room Finishes**

<b>Ceiling</b>	2'x2' AC.T.
<b>Walls</b>	Painted CMU
<b>Casework</b>	Plastic Laminate
<b>Horizontal Surfaces</b>	Plastic Laminate
<b>Floor</b>	Carpet
<b>Floor Base</b>	Rubber

**Notes:**

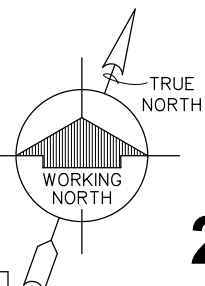
**2-8.00**

# Team Center-A / Observation



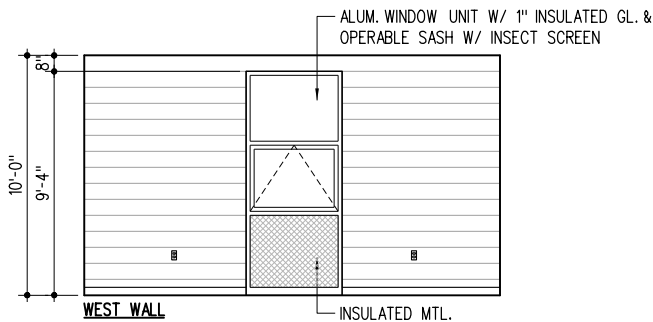
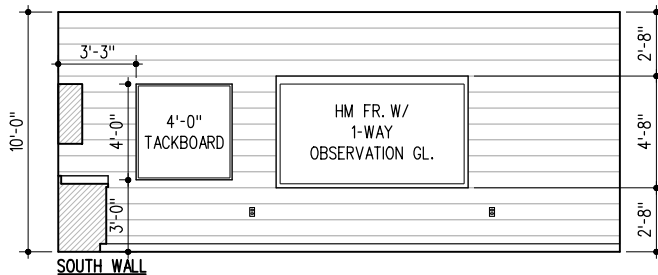
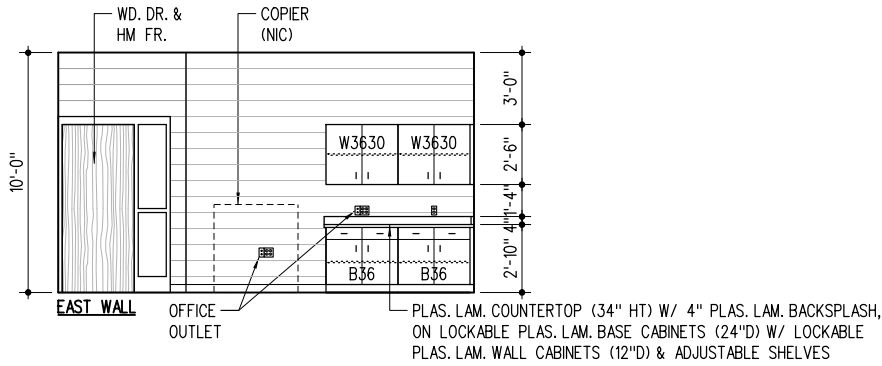
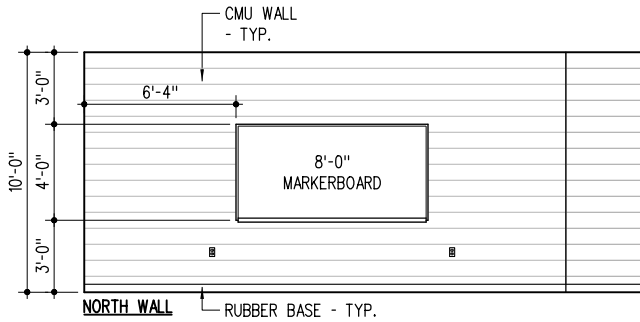
## FLOOR PLAN

1/8" = 1'-0"



# 2-8.01

Team Center-A / Observation



INTERIOR ELEVATIONS

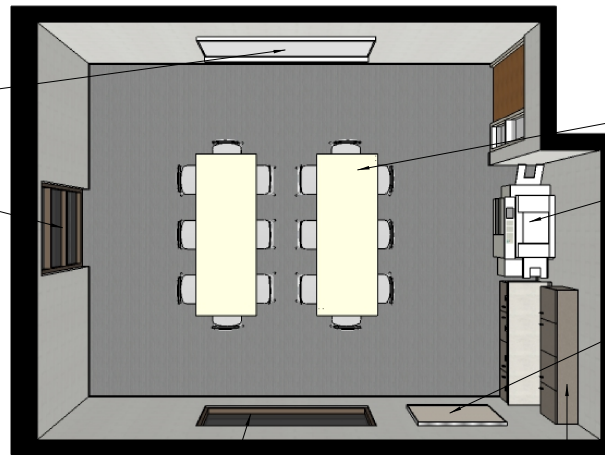
1/8" = 1'-0" 0 2 4 8 16 24

2-8.02

Team Center-A / Observation

WALL MTD.  
MARKERBOARD  
- TYP.

ALUM. WINDOW  
UNIT W/ 1"  
INSULATED GL. &  
OPERABLE SASH  
W/ INSECT  
SCREEN



CONFERENCE TABLE  
& CHAIRS - NIC

COPIER (NIC)

WALL MTD.  
TACKBOARD  
- TYP.

HM FR. W/ 1-WAY  
OBSERVATION GL.

PLAS. LAM. COUNTERTOP (34" HT)  
W/ 4" PLAS. LAM. BACKPLASH,  
ON LOCKABLE PLAS. LAM. BASE  
CABINETS (24"D) W/ LOCKABLE  
PLAS. LAM. WALL CABINETS (12"D)  
& ADJUSTABLE SHELVES

PERSPECTIVE

NS

2-8.03

**Team Center-B**

	Unit Area (NSF)	Qty	Total Area (NSF)
Actual	254	1	254

**Design Occupancy**

5-6 People

Typical Room Dimensions (Feet)

17.3 x 14.7

**Built-In Casework**

- 1 Plas. lam. countertop (34"Ht) w/ 4" plas. lam. backsplash, on lockable plas. lam. base cabinets (24"D) w/ lockable plas. lam. wall cabinets (12"D) & adjustable shelves

**Visual Display**

- 8 Markerboard (in linear feet)
- 6 Tackboard (in linear feet)

**Furniture and Equipment (Not in Contract)**

Conference Table and Chairs  
Copier

**Technology**

Power and data outlets at copier and work counter

**Plumbing, Mechanical and Electrical Systems**

Analog Clock  
Ceiling Mounted Speaker  
Electrical outlets conveniently located

**Lighting**

Access to Natural Daylight (Windows)  
Fluorescent Lighting  
Dual Level Light Switches

**Other Considerations**

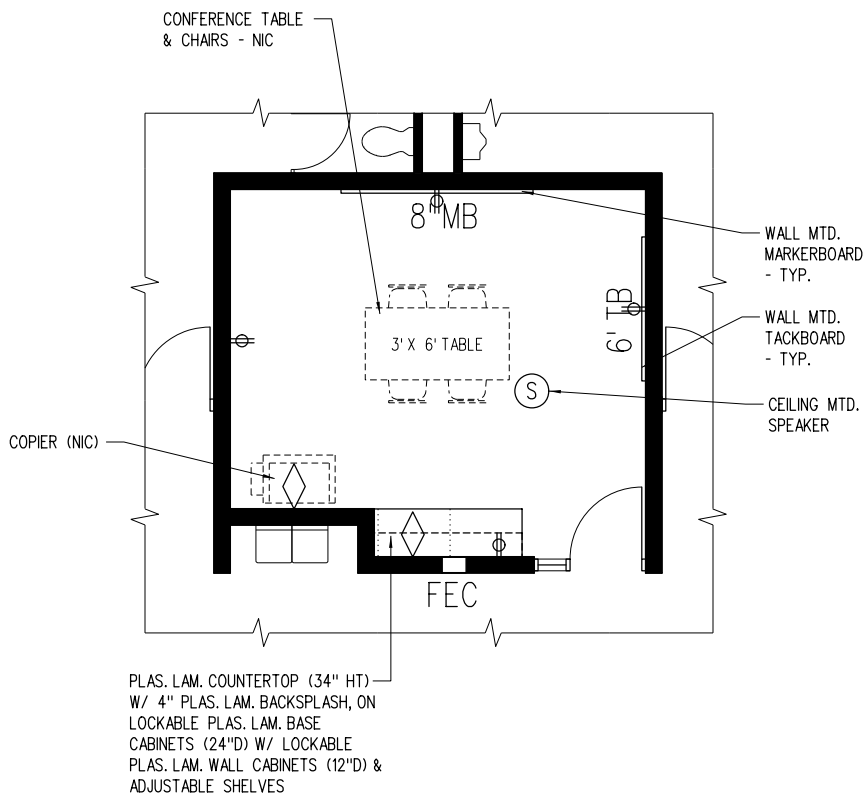
**Room Finishes**

Ceiling	2'x2' AC.T.
Walls	Painted CMU
Casework	Plastic Laminate
Horizontal Surfaces	Plastic Laminate
Floor	Carpet
Floor Base	Rubber

**Notes:**

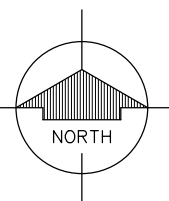
**2-9.00**

# Team Center-B



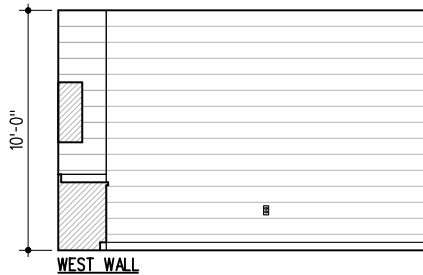
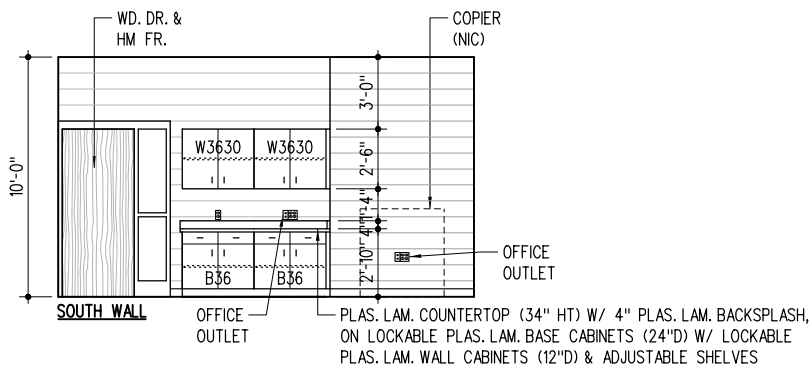
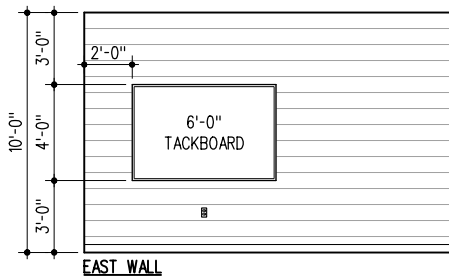
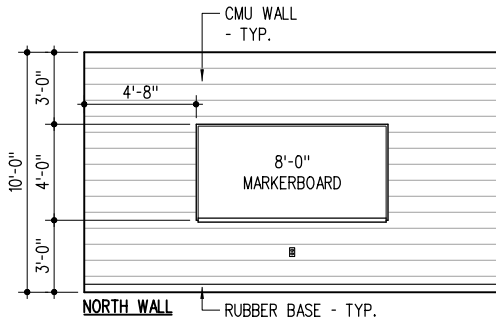
## FLOOR PLAN

1/8" = 1'-0"



# 2-9.01

Team Center-B



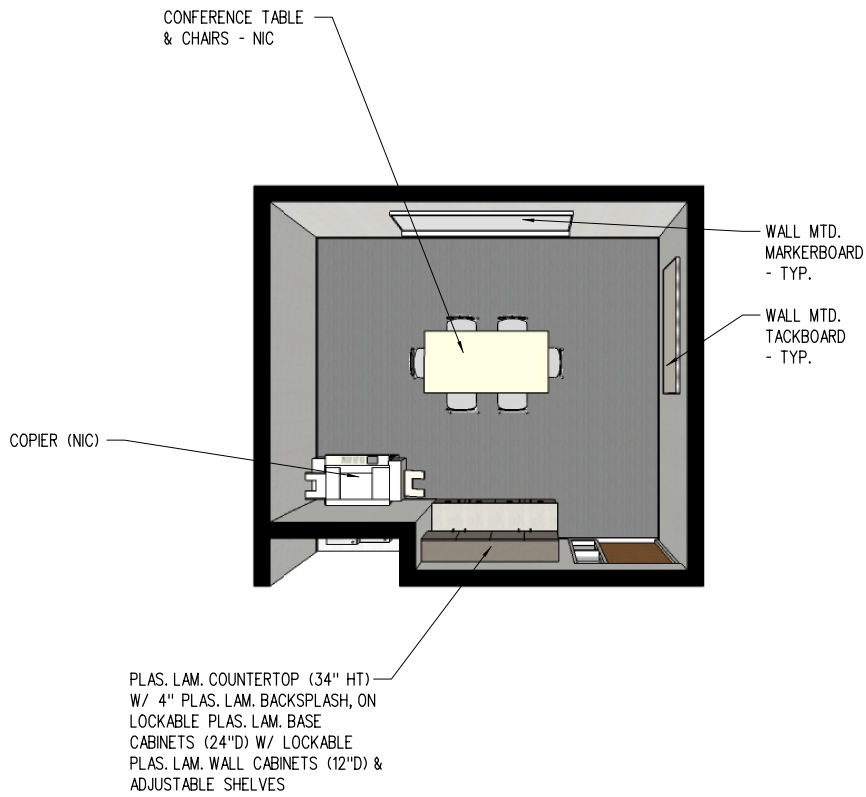
INTERIOR ELEVATIONS

1/8" = 1'-0" 0 2 4 8 16 24

2-9.02



Team Center-B



PERSPECTIVE

NS

2-9.03

**Team Center-C (Existing)**

	Unit Area (NSF)	Qty	Total Area (NSF)
<b>Actual</b>	<b>240</b>	<b>1</b>	<b>240</b>

**Design Occupancy**

5-6 People

Typical Room Dimensions (Feet)

**17.0 x 14.1**

**Built-In Casework**

- 1 Plas. lam. countertop (34"Ht) w/ 4" plas. lam. backsplash, on lockable plas. lam. base cabinets (24"D) w/ lockable plas. lam. wall cabinets (12"D) & adjustable shelves

**Visual Display**

- 8 Markerboard (in linear feet)
- 6 Tackboard (in linear feet)

**Furniture and Equipment (Not in Contract)**

Conference Table and Chairs  
Copier

**Technology**

Power and data outlets at copier and work counter

**Plumbing, Mechanical and Electrical Systems**

Analog Clock  
Ceiling Mounted Speaker  
Electrical outlets conveniently located to supplement existing outlets

**Lighting**

Access to Natural Daylight (Windows)  
Fluorescent Lighting  
Dual Level Light Switches

**Other Considerations**

**Room Finishes**

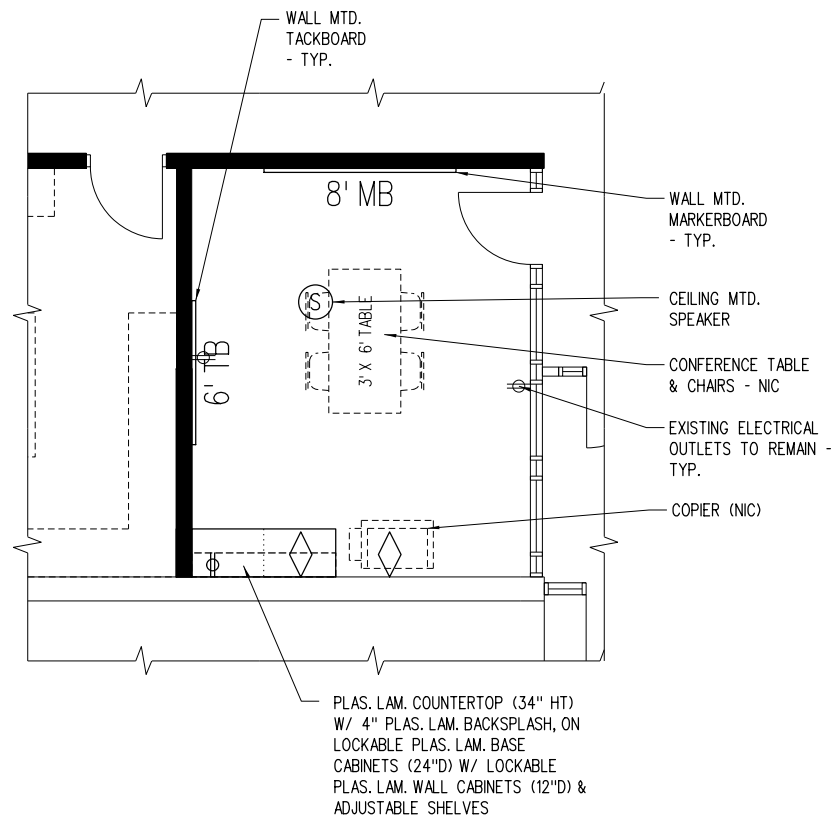
<b>Ceiling</b>	Existing
<b>Walls</b>	Painted CMU
<b>Casework</b>	Plastic Laminate
<b>Horizontal Surfaces</b>	Plastic Laminate
<b>Floor</b>	Carpet
<b>Floor Base</b>	Rubber

**Notes:**

Modify existing floor, walls and ceiling as required.  
New finish materials required as a result of demolition of existing construction to match existing.

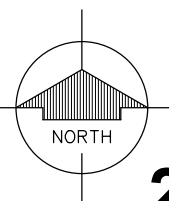
**2-10.00**

Team Center-C (Existing)



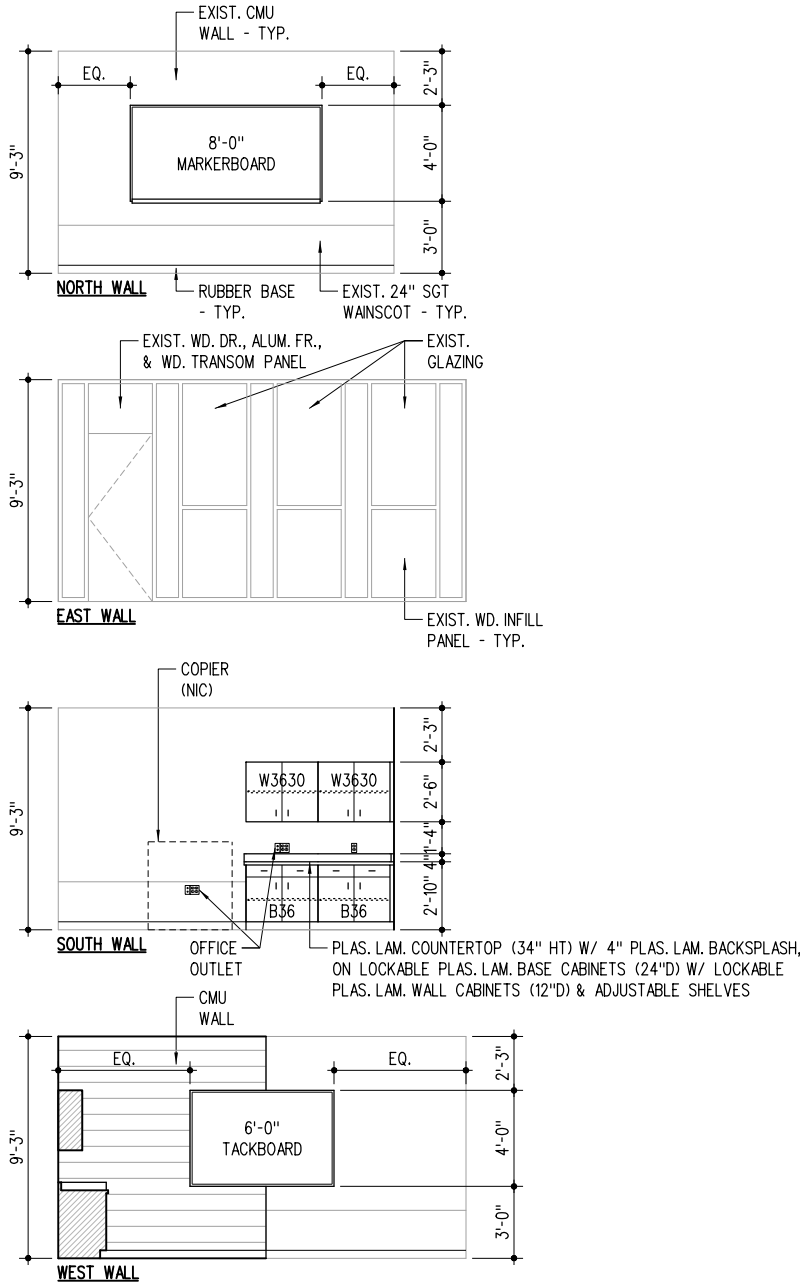
FLOOR PLAN

1/8" = 1'-0"



2-10.01

Team Center-C (Existing)

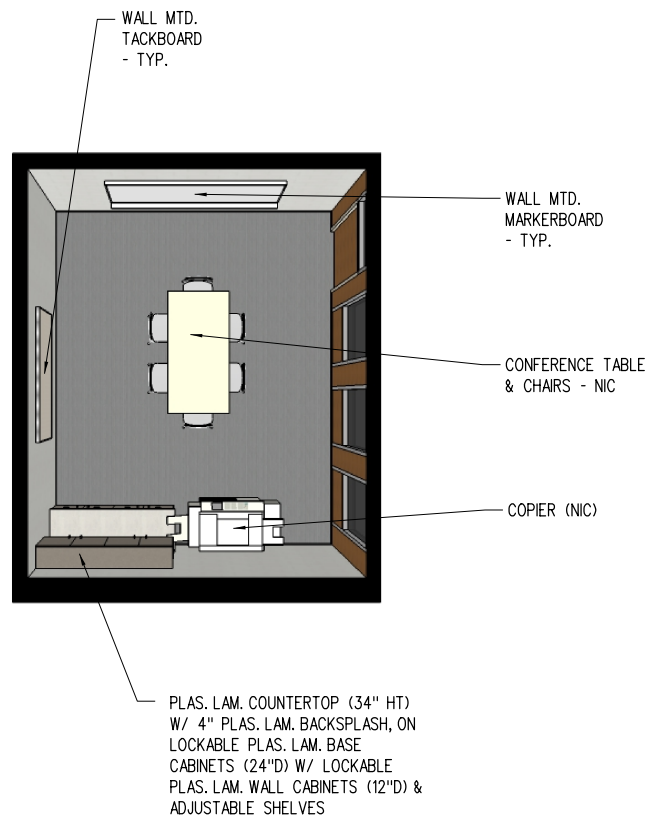


INTERIOR ELEVATIONS



2-10.02

Team Center-C (Existing)



PERSPECTIVE

NS

2-10.03

## Academic Storage

	Unit Area (NSF)	Qty	Total Area (NSF)
<b>Actual</b>	<b>130</b>	<b>2</b>	<b>260</b>

**Design Occupancy**

Not Applicable

Typical Room Dimensions (Feet)

**12.8** x **10.2**

**Storage**

Heavy-Duty Metal Shelving or Heavy-Duty Adjustable Wall-Mounted Shelving (NIC)

**Room Finishes**

**Ceiling** 2'x2' AC.T.

**Walls** Painted CMU

**Casework** Not Applicable

**Horizontal Surfaces** Not Applicable

**Floor** VCT

**Floor Base** Rubber

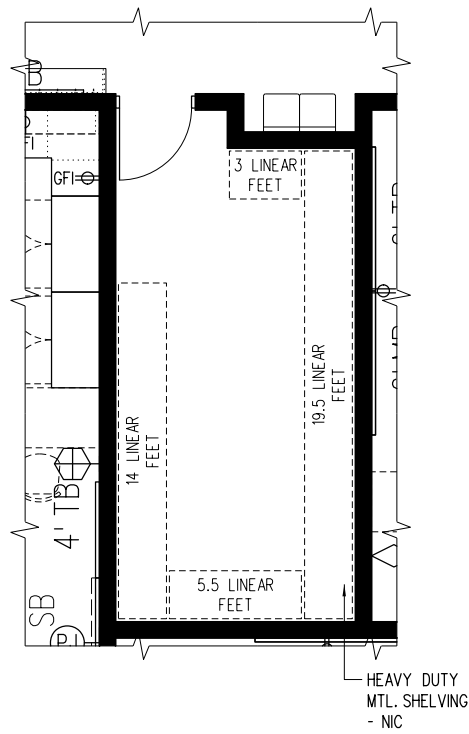
**Lighting**

Fluorescent Lighting

Notes:

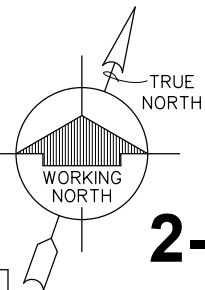
**2-11.00**

Academic Storage



FLOOR PLAN

1/8" = 1'-0"



2-11.01

**Academic Storage (Existing)**

	Unit Area (NSF)	Qty	Total Area (NSF)
<b>Actual</b>	<b>468</b>	<b>2</b>	<b>936</b>

**Design Occupancy**

Not Applicable

Typical Room Dimensions (Feet)

**27.0 x 17.3**

**Built-In Casework**

Plas. lam. countertop (30"Ht) on open plas. lam. base cabinets (18"D) w/ adjustable shelves

**Room Finishes**

<b>Ceiling</b>	2'x2' AC.T.
<b>Walls</b>	Painted Gyp. Bd./CMU
<b>Casework</b>	Plastic Laminate
<b>Horizontal Surfaces</b>	Existing to Remain
<b>Floor</b>	Existing to Remain
<b>Floor Base</b>	Rubber

**Storage**

Heavy-Duty Metal Shelving or Heavy-Duty Adjustable Wall-Mounted Shelving (NIC)

**Plumbing, Mechanical and Electrical Systems**

Unit ventilator at perimeter wall - built-in to new casework

**Lighting**

Fluorescent Lighting - Existing

**Notes:**

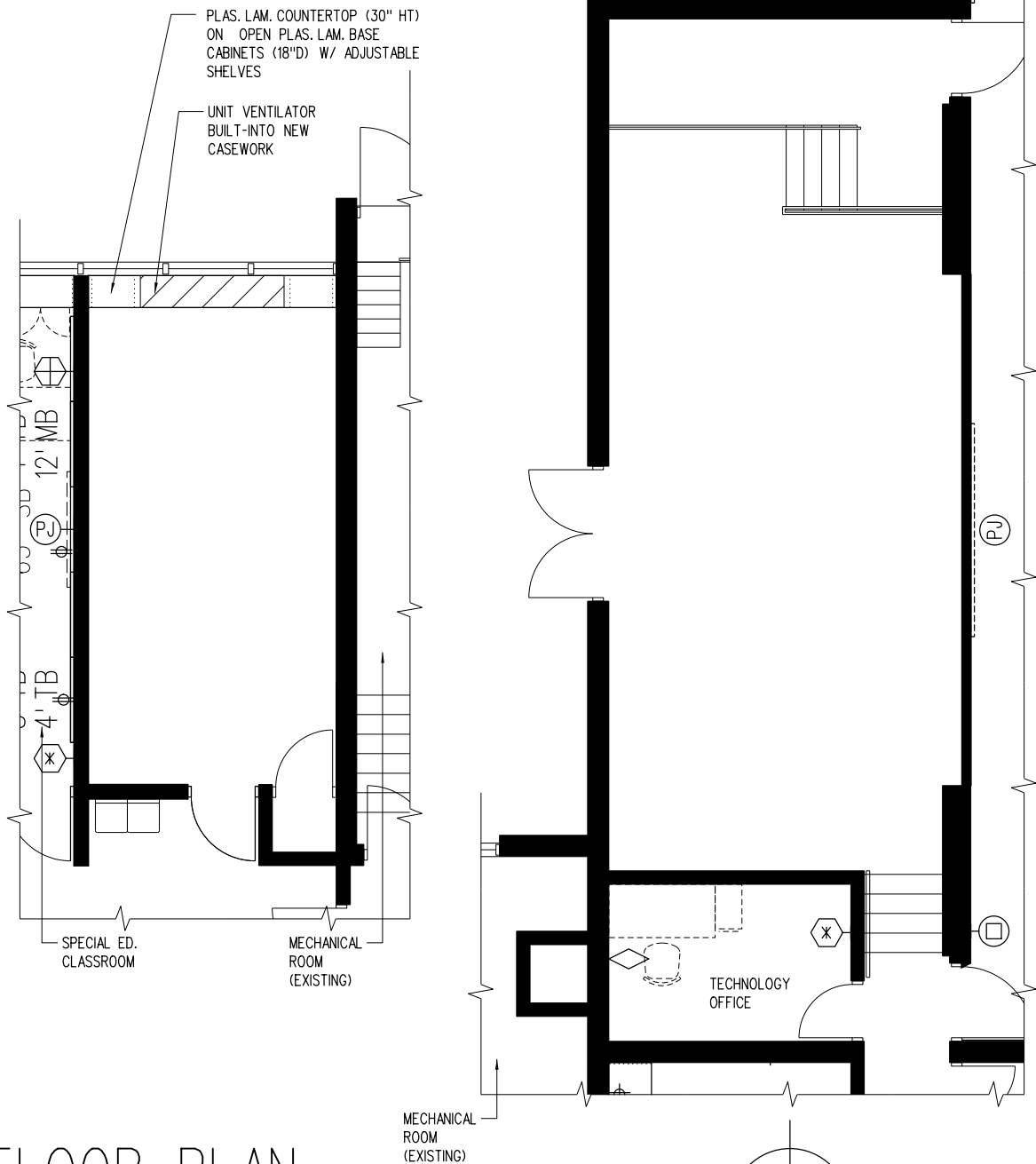
Existing Stage (649 SF) to be used for Academic Storage

Portion of existing classroom in 4th Grade wing to be divided for Academic Storage (288 SF)

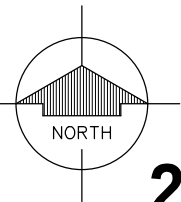
**2-12.00**



### Academic Storage (Existing)

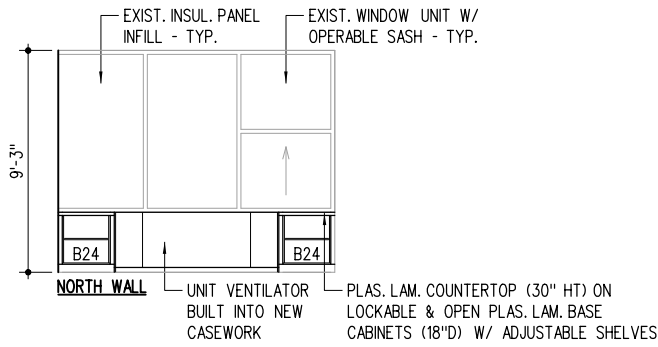


## FLOOR PLAN



# 2-12.01

### Academic Storage (Existing)



## INTERIOR ELEVATIONS



2-12.02

## Book Storage (Existing)

	Unit Area (NSF)	Qty	Total Area (NSF)
<b>Actual</b>	<b>269</b>	<b>1</b>	<b>269</b>

**Design Occupancy**

Not Applicable

Typical Room Dimensions (Feet)

**17.0 x 15.8**

**Storage**

24"D Book storage shelving (NIC) approx. 50 LF of shelving shown

**Room Finishes**

**Ceiling** Existing to Remain

**Walls** Existing to Remain

**Casework** Existing to Remain

**Horizontal Surfaces** N/A

**Floor** Existing to Remain

**Floor Base** Existing to Remain

**Lighting**

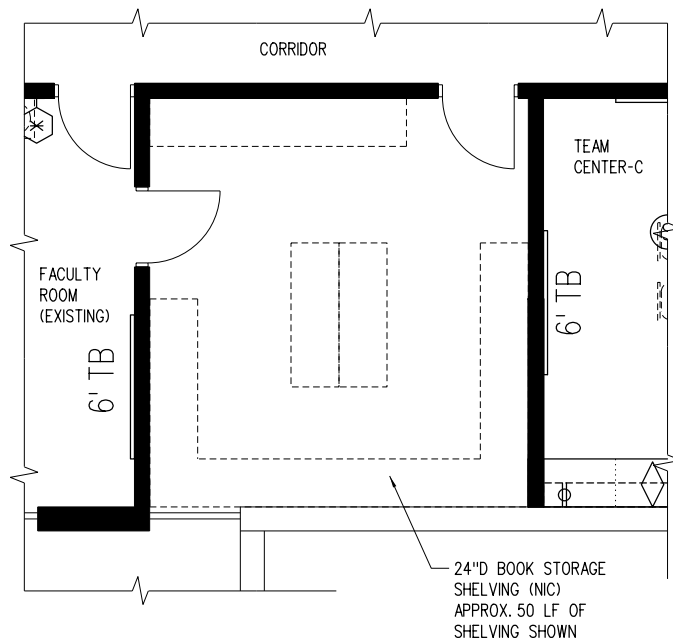
Fluorescent Lighting - Existing

**Notes:**

Modify existing floor, walls and ceiling as required.  
New finish materials required as a result of demolition of existing construction to match existing.

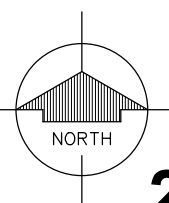
**2-13.00**

### Book Storage (Existing)



## FLOOR PLAN

1/8" = 1'-0"



# 2-13.01