



PERU ELEMENTARY SCHOOL DISTRICT 124

Peru, La Salle County, Illinois

Addition and Renovation Northview Elementary School Design Development Manual

Healy | Bender Project No. 10-3113-145

Tab 2 Sheet 2-4.00 - Tab 2 Sheet 2-13.01

First Draft

January 29, 2014



2nd Grade Classroom

	Unit Area (NSF)	Qty	Total Area (NSF)
Actual	960	2	1,926

Design Occupancy

1 Instructor + 28 Students

Typical Room Dimensions (Feet)

26.7 x 36.0

Built-In Casework

Lockable base cabinets with plastic laminate countertop

- 1 48"x24"x84" Lockable Teacher wardrobe unit w/ hooks and adjustable shelves
- 1 48"x24"x84" Lockable Teacher storage unit w/ adjustable shelves

Visual Display

- 14 Non-Glare Markerboard (in linear feet) - Main Teaching Space
- 12 Markerboard (in linear feet) - Accessory Teaching Space
- 4 Tackboard (in linear feet) - Main Teaching Space
- 4 Tackboard (in linear feet) - Main Teaching Space
- 6 Tackboard (in linear feet) - Accessory Teaching Space
- 22 12" Tackstrip (in linear feet) - Main Teaching Space
- 18 12" Tackstrip (in linear feet) - Accessory Teaching Space

Furniture and Equipment (Not In Contract)

- Student desks or tables with chairs
- Teacher desk and chair
- 2 2-drawer teacher file cabinets
- Mobile storage cabinets and bookshelves
- Pencil Sharpener

Technology

- 1 Ceiling Mounted Data Projector (NIC) - Power and Data Outlets Provided
- 1 Teacher Computer and Printer (NIC) - Power and Data Outlets Provided
- 1 Data and Auxiliary Connections to Teacher Station
- 1 Telephone (NIC) - Outlet Provided

Plumbing, Mechanical and Electrical Systems

- Electrical outlets conveniently located
- Analog Clock
- Ceiling Mounted Speaker

Lighting

- Access to Natural Daylight (Windows)
- Fluorescent Lighting
- Dual Level Light Switches

Other Considerations

Room Finishes

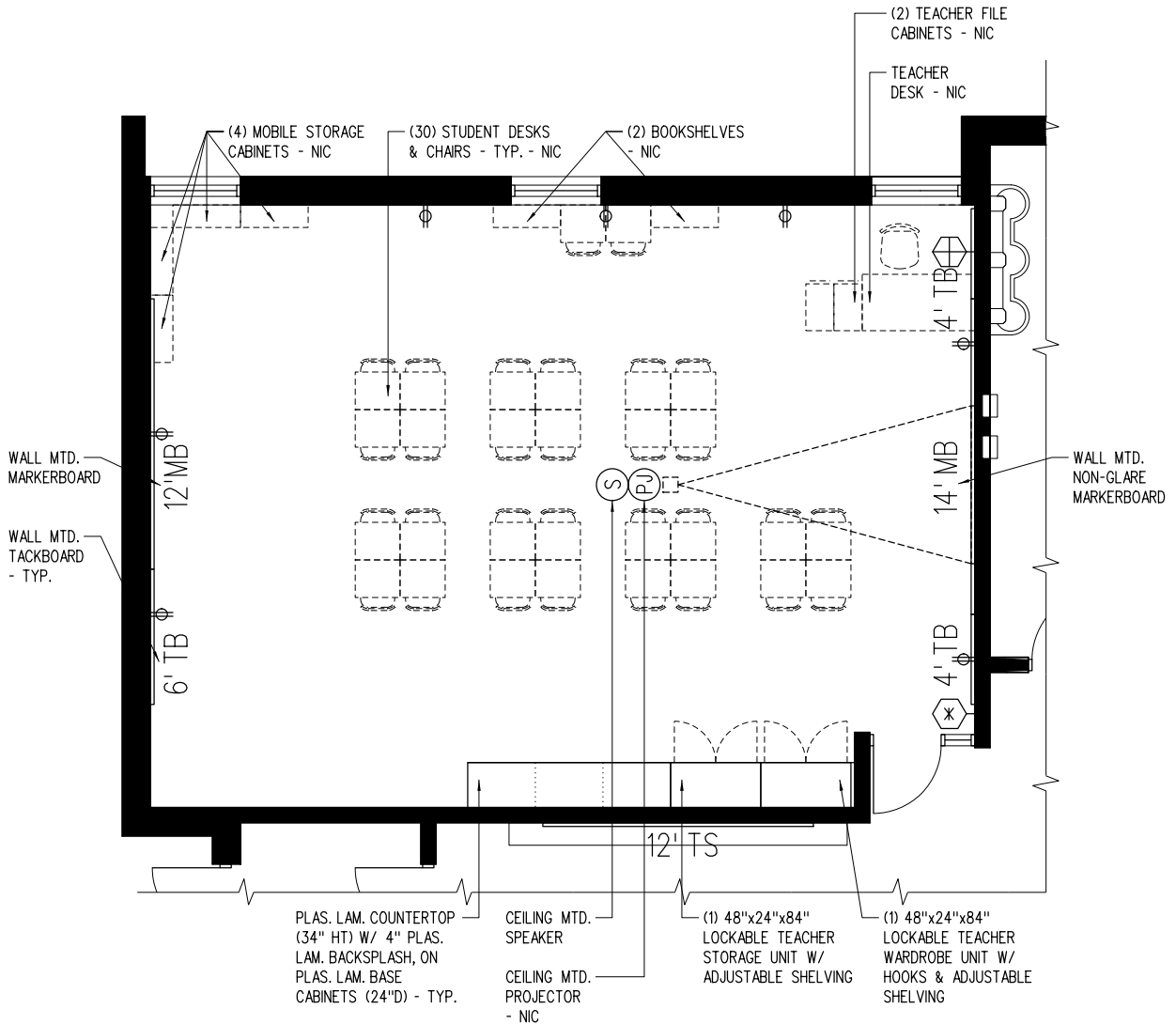
Ceiling	2'x2' AC.T.
Walls	Painted CMU
Casework	Plastic Laminate
Horizontal Surfaces	Plastic Laminate
Floor	VCT
Floor Base	Rubber

Notes:

Coat hooks and shelves provided in adjacent corridor for student use. Similar to existing condition.

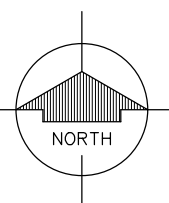
2-4.00

2nd Grade Classroom



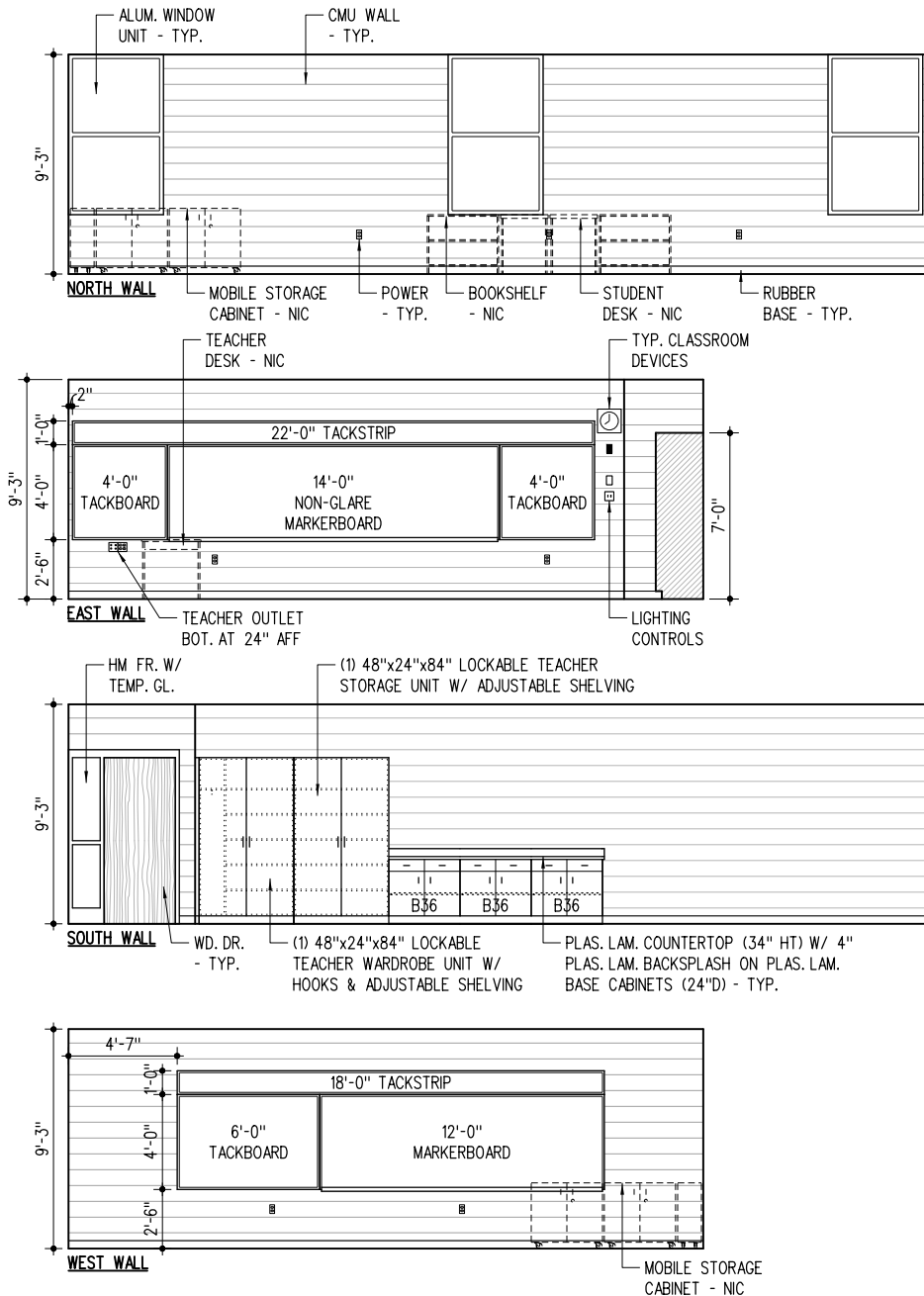
FLOOR PLAN

1/8" = 1'-0"



2-4.01

2nd Grade Classroom

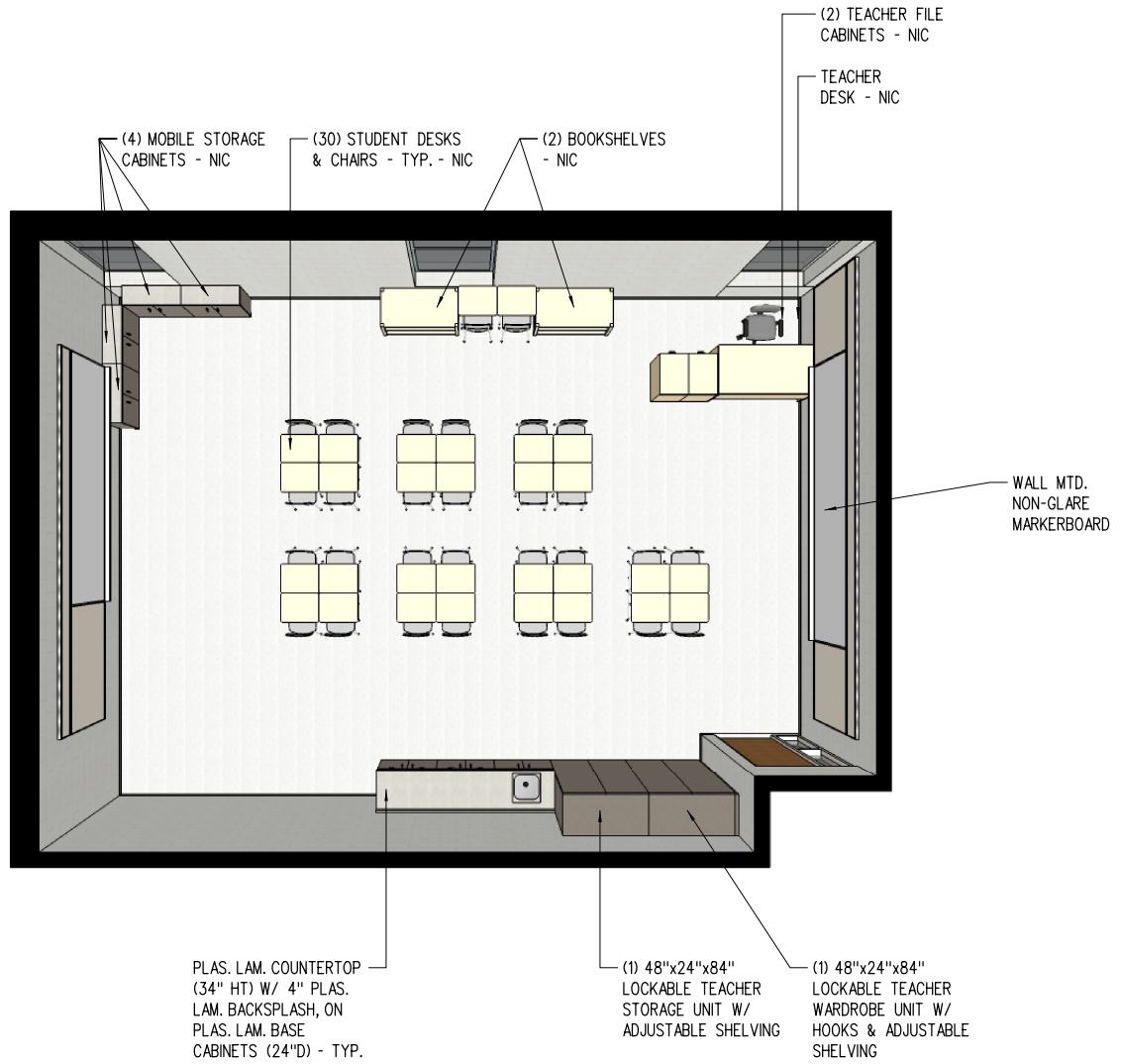


INTERIOR ELEVATIONS



2-4.02

2nd Grade Classroom



PERSPECTIVE

NS

2-4.03

2nd Grade Classroom (Existing)

	Unit Area (NSF)	Qty	Total Area (NSF)
Actual	961	3	2,883

Design Occupancy

1 Instructor + 28 Students

Typical Room Dimensions (Feet)

27.0 x **35.6**

Built-In Casework

Wood base cabinets with plastic laminate countertop
Built-in open storage closet (32 SF) Sliding door previously removed.

Room Finishes

Ceiling	Existing to Remain
Walls	Existing to Remain
Casework	Existing to Remain
Horizontal Surfaces	Existing to Remain
Floor	Existing to Remain
Floor Base	Existing to Remain

Visual Display

- 16 Markerboard (in linear feet) - Existing
- 4 Tackboard (in linear feet) - Existing
- 4 Tackboard (in linear feet) - Existing
- 12 Tackboard (in linear feet) - Existing
- 12 Tackboard (in linear feet) - Existing
- 6 Tackboard (in linear feet) - Existing
- 2 Tackboard (in linear feet) - Existing
- 2 Tackboard (in linear feet) - Existing
- 16 12" Tackstrip (in linear feet) - Existing

Notes:

Remove existing plumbing fixtures in classroom toilet room and prepare room for conversion to additional storage closet (22 SF).

Furniture and Equipment (Not In Contract)

- Student desks or tables with chairs
- Teacher desk and chair
- 2 2-drawer teacher file cabinets
- Mobile storage cabinets and bookshelves

Technology

Computer work stations

Plumbing, Mechanical and Electrical Systems

Electrical outlets - Existing
Ceiling mounted motion sensors for lighting control
Stainless steel sink in classroom

Lighting

Access to Natural Daylight (Windows)
Existing fluorescent Lighting (Surface mounted)

Other Considerations

Existing storage closet (8 SF)

2-5.00

3rd Grade Classroom (Existing)

	Unit Area (NSF)	Qty	Total Area (NSF)
Actual	955	5	4,775

Design Occupancy

1 Instructor + 28 Students

Typical Room Dimensions (Feet)

27.0 x **35.4**

Built-In Casework

Wood base cabinets with plastic laminate countertop
Built-in open storage closet (32 SF) Sliding door previously removed.

Room Finishes

Ceiling	1'x1' perforated metal tile
Walls	SGT & painted CMU
Casework	Wood / Plastic Lam.
Horizontal Surfaces	Plastic Laminate
Floor	VCT
Floor Base	SGT & Rubber

Visual Display

- 16 Markerboard (in linear feet) - Main Teaching Space
- 4 Tackboard (in linear feet) - Main Teaching Space
- 4 Tackboard (in linear feet) - Main Teaching Space
- 12 Tackboard (in linear feet) - Accessory Teaching Space
- 12 Tackboard (in linear feet) - Accessory Teaching Space
- 6 Tackboard (in linear feet) - Accessory Teaching Space
- 2 Tackboard (in linear feet) - Accessory Teaching Space
- 2 Tackboard (in linear feet) - Accessory Teaching Space
- 16 2" Tackstrip (in linear feet) - Main Teaching Space

Notes:

Remove existing plumbing fixtures in classroom toilet room and prepare room for conversion to additional storage closet (22 SF).

Furniture and Equipment (Not In Contract)

- Student desks or tables with chairs
- Teacher desk and chair
- 2 2-drawer teacher file cabinets
- Mobile storage cabinets and bookshelves

Technology

Computer work stations

Plumbing, Mechanical and Electrical Systems

Electrical outlets
Ceiling mounted motion sensors for lighting control
Stainless steel sink in classroom

Lighting

Access to Natural Daylight (Windows)
Fluorescent Lighting (Surface mounted)

Other Considerations

Existing storage closet (8 SF)

2-6.00

4th Grade Classroom (Existing)

	Unit Area (NSF)	Qty	Total Area (NSF)
Actual	957	5	4,785

Design Occupancy

1 Instructor + 28 Students

Typical Room Dimensions (Feet)

27.0 x **35.4**

Built-In Casework

Wood wall and base cabinets with plastic laminate countertop
 Built-in open storage closet (32 SF) Sliding door previously removed.

Room Finishes

Ceiling	1'x1' perforated metal tile
Walls	SGT & painted CMU
Casework	Wood / Plastic Lam.
Horizontal Surfaces	Plastic Laminate
Floor	VCT
Floor Base	SGT & Rubber

Visual Display

- 16 Markerboard (in linear feet) - Main Teaching Space
- 4 Tackboard (in linear feet) - Main Teaching Space
- 4 Tackboard (in linear feet) - Main Teaching Space
- 12 Tackboard (in linear feet) - Accessory Teaching Space
- 12 Tackboard (in linear feet) - Accessory Teaching Space
- 6 Tackboard (in linear feet) - Accessory Teaching Space
- 2 Tackboard (in linear feet) - Accessory Teaching Space
- 2 Tackboard (in linear feet) - Accessory Teaching Space
- 16 12" Tackstrip (in linear feet) - Main Teaching Space

Notes:

Remove existing plumbing fixtures in classroom toilet room and prepare room for conversion to additional storage closet (22 SF).

Furniture and Equipment (Not In Contract)

- Student desks or tables with chairs
- Teacher desk and chair
- 2 2-drawer teacher file cabinets
- Mobile storage cabinets and bookshelves

Technology

Computer work stations

Plumbing, Mechanical and Electrical Systems

Electrical outlets
 Ceiling mounted motion sensors for lighting control
 Stainless steel sink in classroom

Lighting

Access to Natural Daylight (Windows)
 Fluorescent Lighting (Surface mounted)

Other Considerations

Existing storage closet (8 SF)

2-7.00

PK-1st Grade Team Center / Observation

	Unit Area (NSF)	Qty	Total Area (NSF)
Actual	482	1	482

Design Occupancy

8-10 People

Typical Room Dimensions (Feet)

18.0 x **26.8**

Built-In Casework

Lockable plastic laminate wall and base cabinets with plastic laminate countertop.
(Portion of base cabinets and countertop to be accessible at 34" AFF)

Room Finishes

Ceiling	2'x2' AC.T.
Walls	Painted CMU
Casework	Plastic Laminate
Horizontal Surfaces	Plastic Laminate
Floor	VCT
Floor Base	Rubber

Visual Display

- 8 Markerboard (in linear feet)
- 6 Tackboard (in linear feet)

Furniture and Equipment (Not in Contract)

Conference Table and Chairs
Chair at built-in computer work station
Television monitor (wall mounted)

Notes:

Technology

- 2-way observation window in wall between adjacent Reading Recovery room.
- Electrical outlets conveniently located
- 1 Computer and Printer (NIC) - Power and Data Outlets Provided
- 1 Power and Data Outlet at television monitor location

Plumbing, Mechanical and Electrical Systems

Analog Clock
Ceiling Mounted Speaker

Lighting

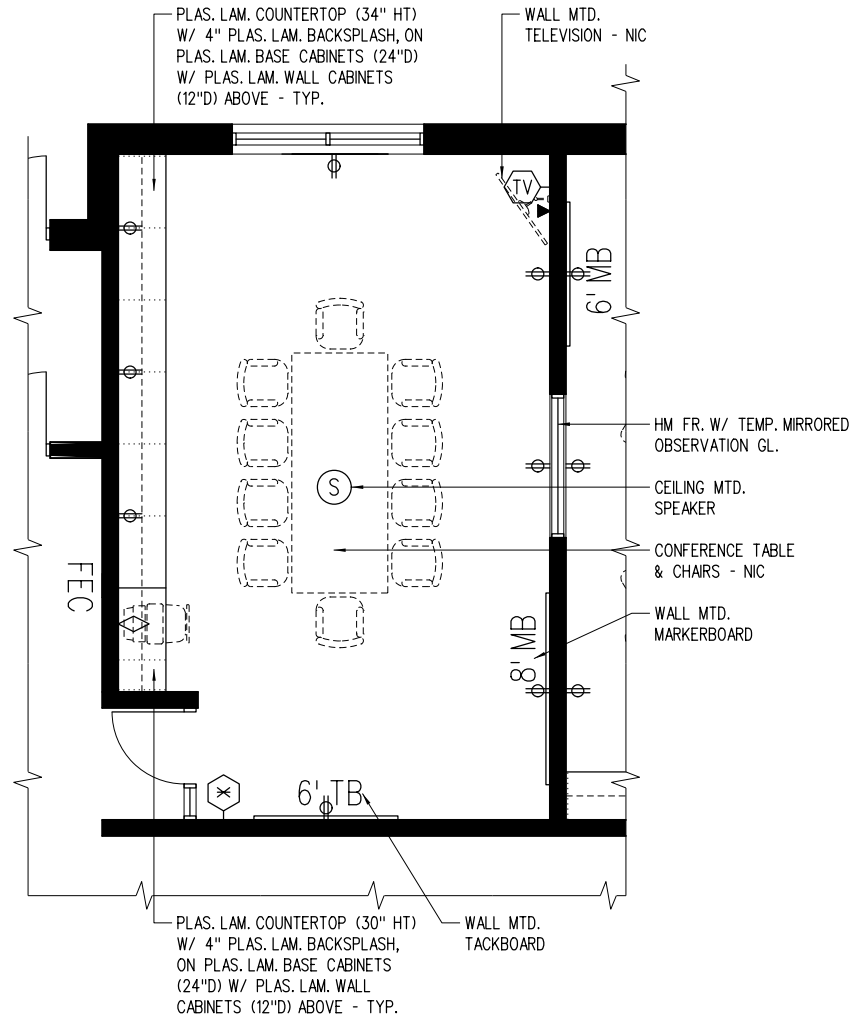
Access to Natural Daylight (Windows)
Fluorescent Lighting
Dual Level Light Switches

Other Considerations

Lighting to be arranged and switched for proper operation of 2-way observation window

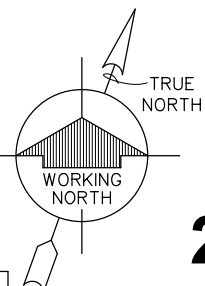
2-8.00

PK-1st Grade Team Center / Observation



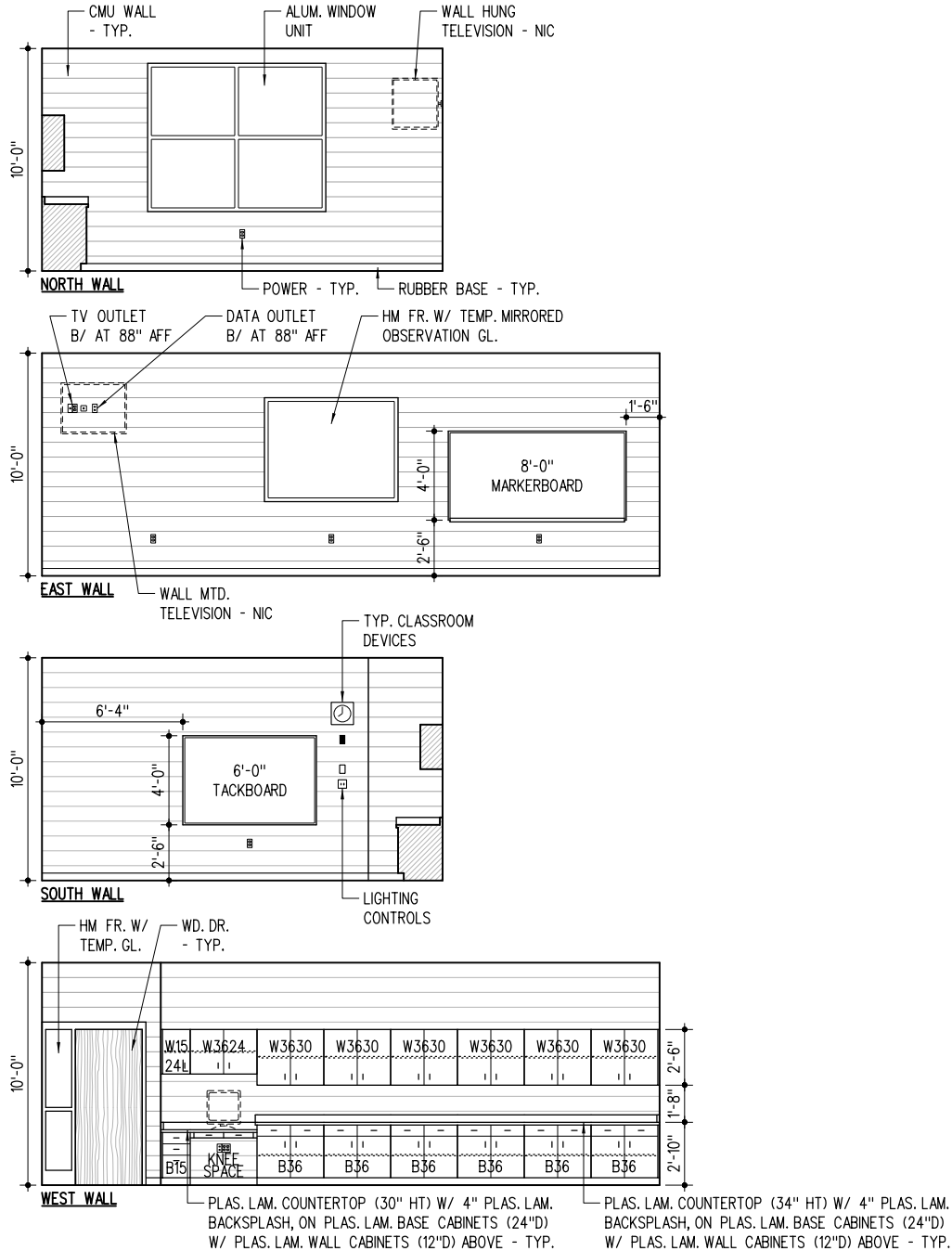
FLOOR PLAN

1/8" = 1'-0"



2-8.01

PK-1st Grade Team Center / Observation

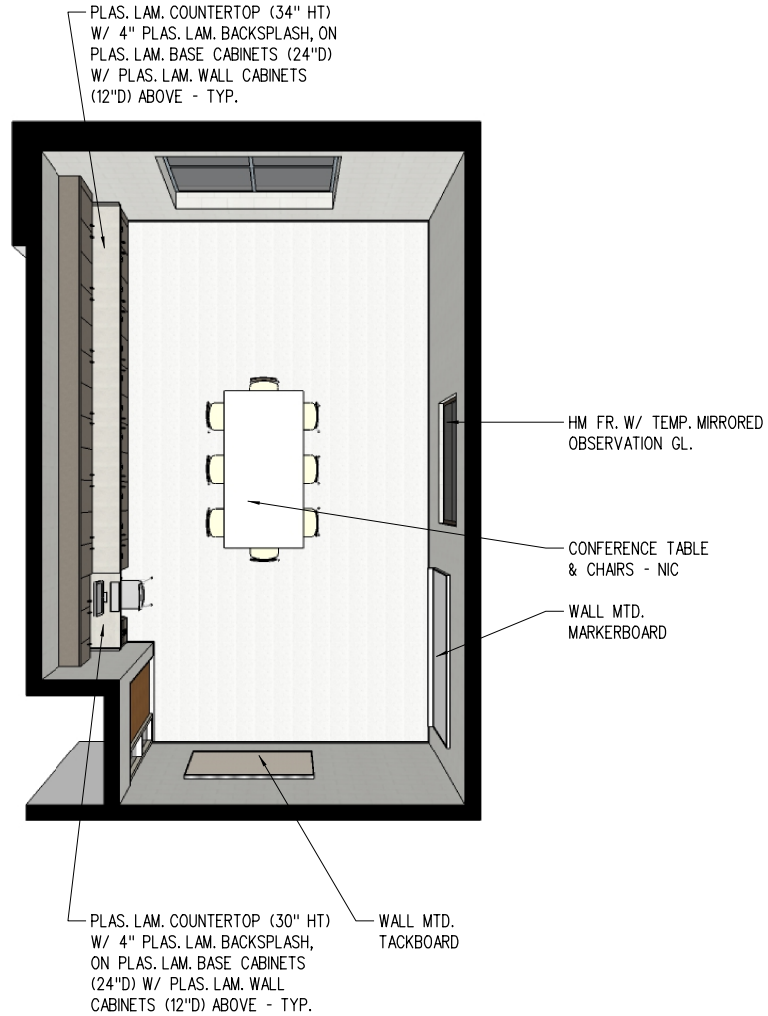


INTERIOR ELEVATIONS



2-8.02

PK-1st Grade Team Center / Observation



PERSPECTIVE

NS

2-8.03

2nd Grade Team Center

	Unit Area (NSF)	Qty	Total Area (NSF)
Actual	238	1	238

Design Occupancy

5-6 People

Typical Room Dimensions (Feet)

17.3 x 13.8

Built-In Casework

Lockable plastic laminate wall and base cabinets with plastic laminate countertop.
(Portion of base cabinets and countertop to be accessible at 34" AFF)

Room Finishes

Ceiling	2'x2' AC.T.
Walls	Painted CMU
Casework	Plastic Laminate
Horizontal Surfaces	Plastic Laminate
Floor	VCT
Floor Base	Rubber

Visual Display

- 8 Markerboard (in linear feet)
- 6 Tackboard (in linear feet)

Furniture and Equipment (Not in Contract)

Conference Table and Chairs
Chair at built-in computer work station
Television monitor (wall mounted)

Notes:

Technology

- Electrical outlets conveniently located
- 1 Computer and Printer (NIC) - Power and Data Outlets Provided
- 1 Power and Data Outlet at television monitor location

Plumbing, Mechanical and Electrical Systems

Analog Clock
Ceiling Mounted Speaker

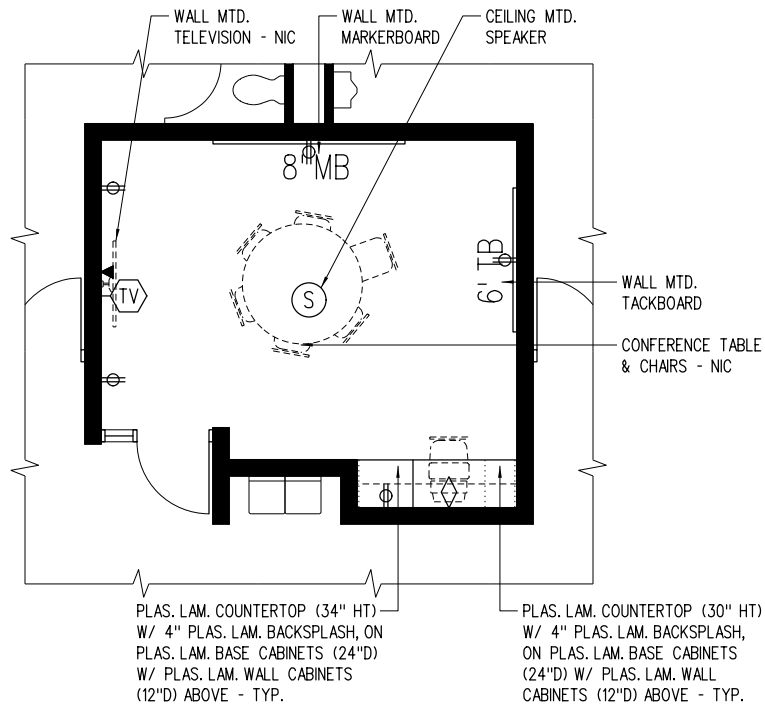
Lighting

Access to Natural Daylight (Windows)
Fluorescent Lighting
Dual Level Light Switches

Other Considerations

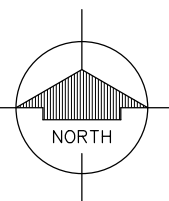
2-9.00

2nd Grade Team Center



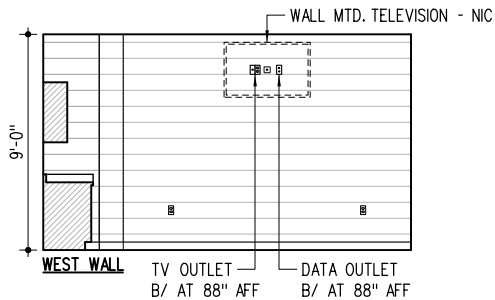
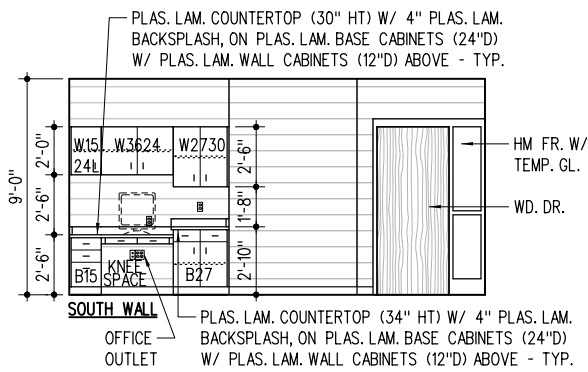
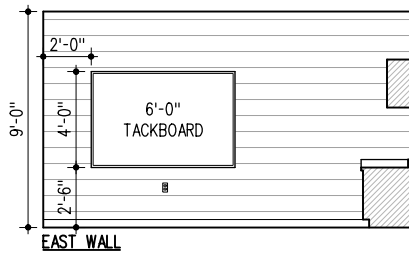
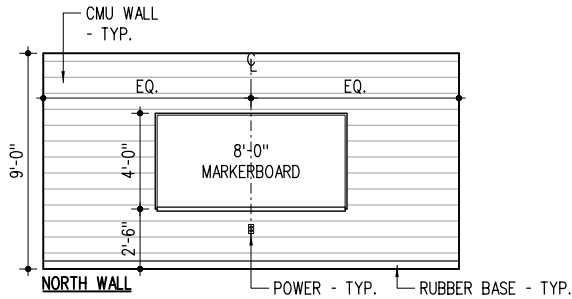
FLOOR PLAN

1/8" = 1'-0"



2-9.01

2nd Grade Team Center

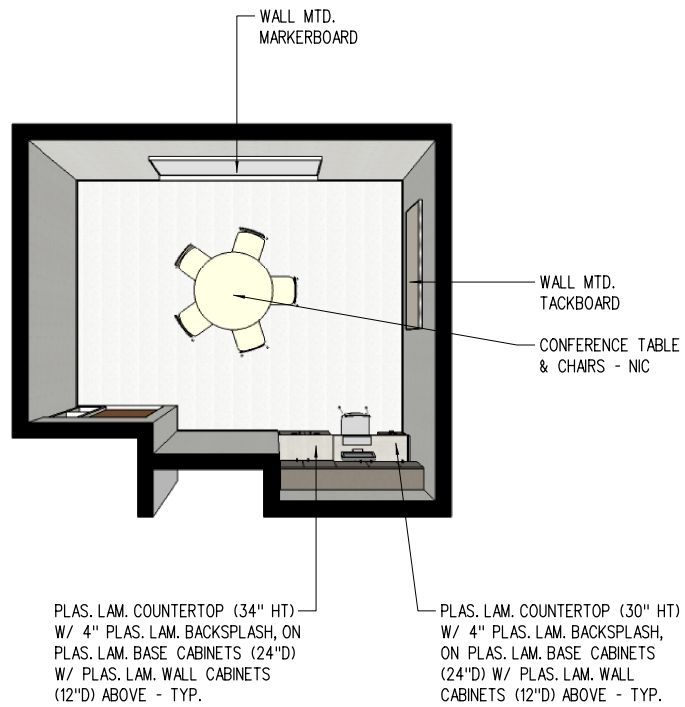


INTERIOR ELEVATIONS

1/8" = 1'-0" 0 2 4 8 16 24

2-9.02

2nd Grade Team Center



PERSPECTIVE

NS

2-9.03

3rd-4th Grade Team Center (Existing)

	Unit Area (NSF)	Qty	Total Area (NSF)
Actual	265	1	265

Design Occupancy

5-6 People

Typical Room Dimensions (Feet)

17.0 x 15.6

Built-In Casework

Lockable plastic laminate wall and base cabinets with plastic laminate countertop.
(Portion of base cabinets and countertop to be accessible at 34" AFF)

Room Finishes

Ceiling	Existing
Walls	Painted CMU
Casework	Plastic Laminate
Horizontal Surfaces	Plastic Laminate
Floor	VCT
Floor Base	Rubber

Visual Display

- 8 Markerboard (in linear feet)
- 6 Tackboard (in linear feet)

Furniture and Equipment (Not in Contract)

Conference Table and Chairs
Chair at built-in computer work station
Television monitor (wall mounted)

Notes:

Technology

- 1 Computer and Printer (NIC) - Power and Data Outlets Provided
- 1 Power and Data Outlet at television monitor location

Plumbing, Mechanical and Electrical Systems

Analog Clock
Ceiling Mounted Speaker
Existing power outlets

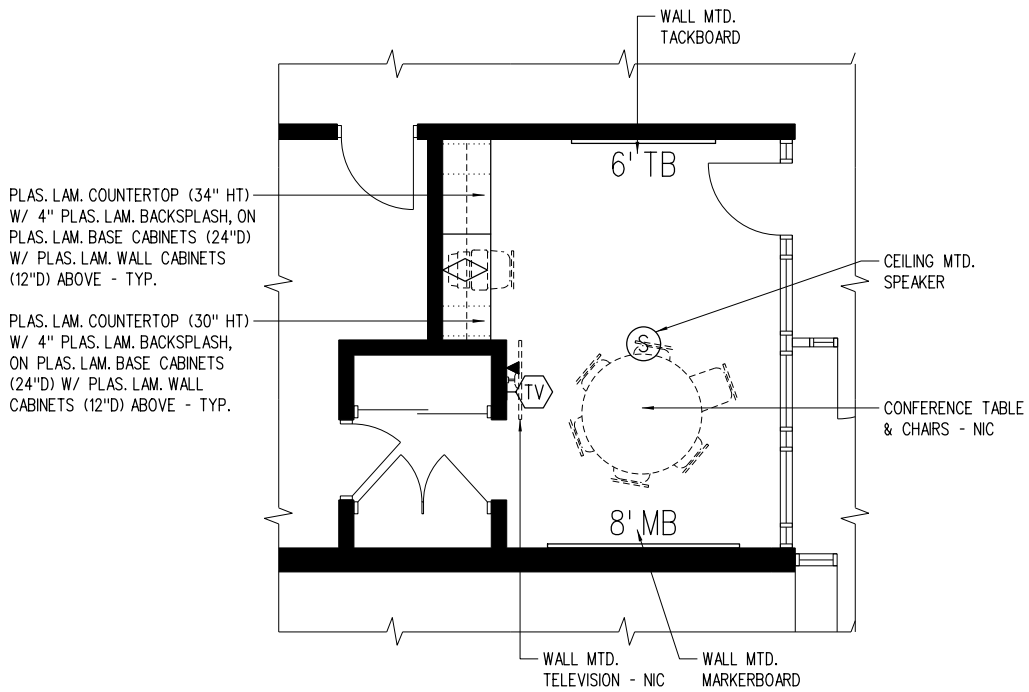
Lighting

Existing lighting and switching

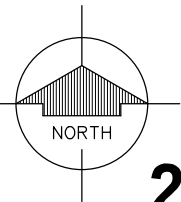
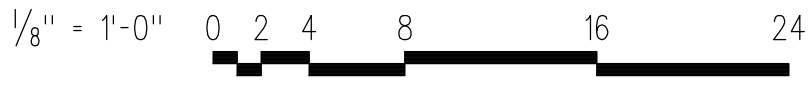
Other Considerations

2-10.00

3rd-4th Grade Team Center (Existing)

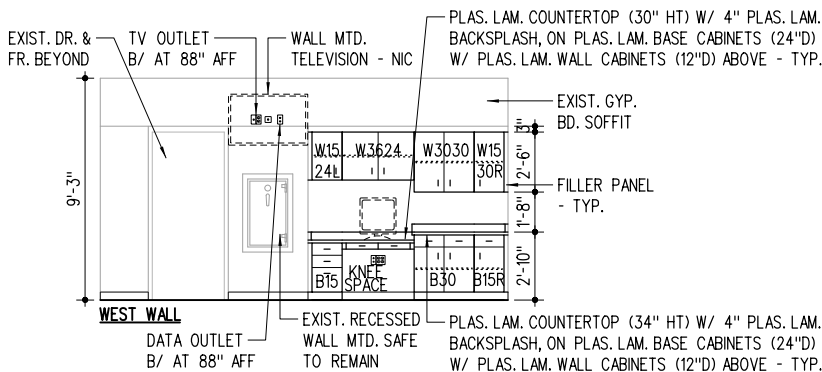
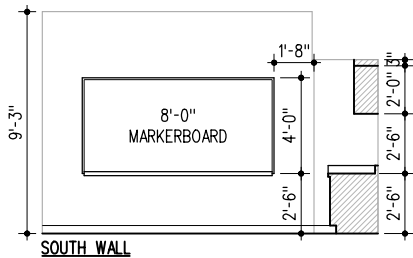
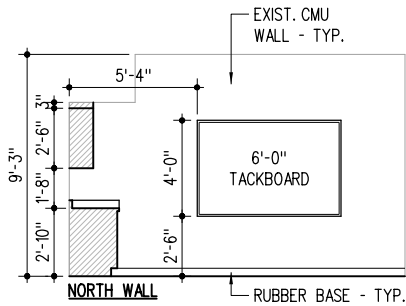


FLOOR PLAN



2-10.01

3rd-4th Grade Team Center (Existing)



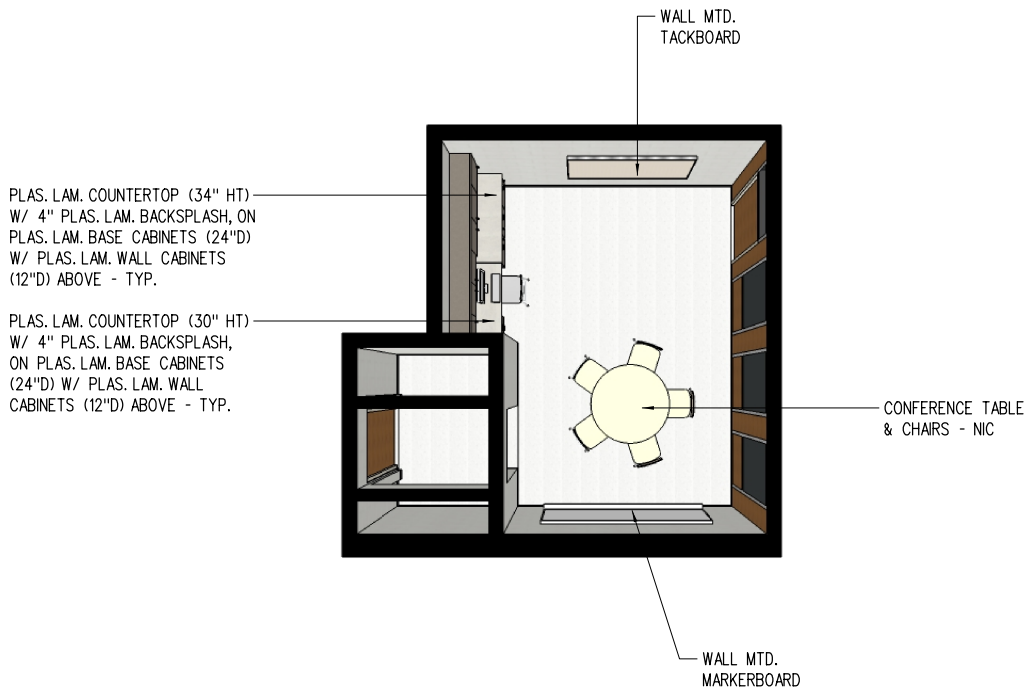
INTERIOR ELEVATIONS

1/8" = 1'-0" 0 2 4 8 16 24



2-10.02

3rd-4th Grade Team Center (Existing)



PERSPECTIVE

NS

2-10.03

Academic Storage

	Unit Area (NSF)	Qty	Total Area (NSF)
Actual	135	1	135

Design Occupancy

Not Applicable

Typical Room Dimensions (Feet)

12.8 x 10.5

Storage

Wire Shelving or Heavy-Duty Adjustable Wall-Mounted Shelving (NIC)

Room Finishes

Ceiling 2'x2' AC.T.

Walls Painted CMU

Casework Not Applicable

Horizontal Surfaces Not Applicable

Floor VCT

Floor Base Rubber

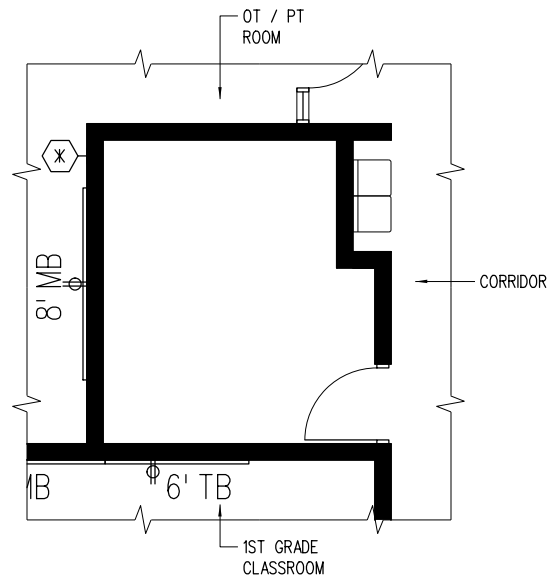
Lighting

Fluorescent Lighting

Notes:

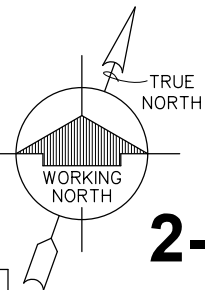
2-11.00

Academic Storage



FLOOR PLAN

1/8" = 1'-0"



2-11.01

Academic Storage (Existing)

	Unit Area (NSF)	Qty	Total Area (NSF)
Actual	475	2	950

Design Occupancy

Not Applicable

Typical Room Dimensions (Feet)

27.0 x 17.6

Storage

Wire Shelving or Heavy-Duty Adjustable Wall-Mounted Shelving (NIC)

Room Finishes

Ceiling	2'x2' AC.T.
Walls	Painted Gyp. Bd./CMU
Casework	Existing to Remain
Horizontal Surfaces	Existing to Remain
Floor	Existing to Remain
Floor Base	Rubber

Lighting

Fluorescent Lighting - Existing

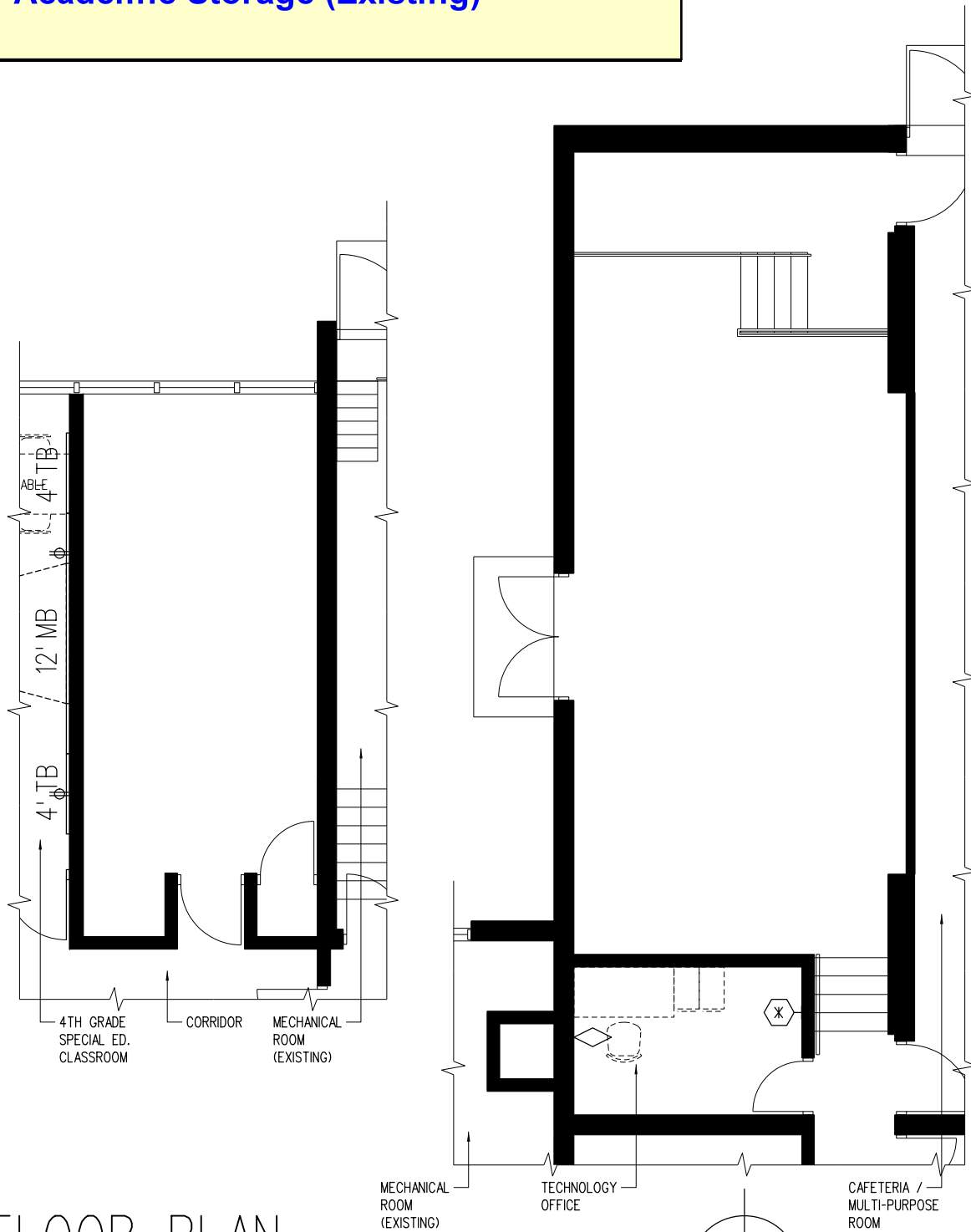
Notes:

Existing Stage (650 SF) to be used for Academic Storage

Portion of existing classroom in 4th Grade wing to be divided for Academic Storage (300 SF)

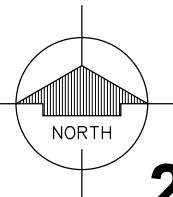
2-12.00

Academic Storage (Existing)



FLOOR PLAN

1/8" = 1'-0"



2-12.01

Book Storage (Existing)

	Unit Area (NSF)	Qty	Total Area (NSF)
Actual	233	1	233

Design Occupancy

Not Applicable

Typical Room Dimensions (Feet)

17.0 x **13.7**

Storage

Wire Shelving or Heavy-Duty Adjustable Wall-Mounted Shelving (NIC)

Room Finishes

Ceiling Existing to Remain

Walls Existing to Remain

Casework Existing to Remain

Horizontal Surfaces N/A

Floor Existing to Remain

Floor Base Existing to Remain

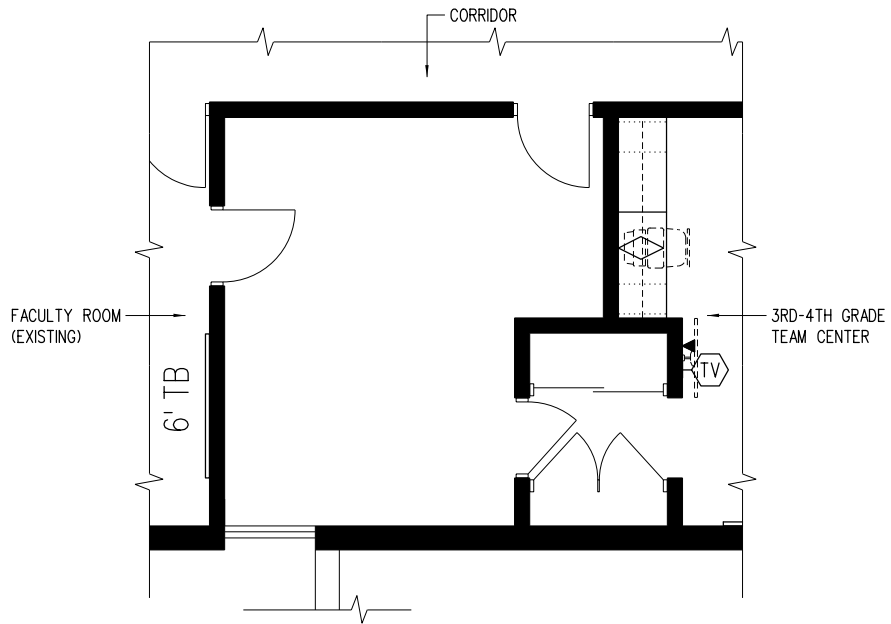
Lighting

Fluorescent Lighting - Existing

Notes:

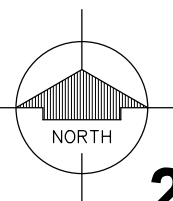
2-13.00

Book Storage (Existing)



FLOOR PLAN

1/8" = 1'-0"



2-13.01