



PERU ELEMENTARY SCHOOL DISTRICT 124

Peru, La Salle County, Illinois

Addition and Renovation Northview Elementary School Design Development Manual

Healy | Bender Project No. 10-3113-145

Tab 2 Sheet 2-1.00 - Tab 2 Sheet 2-3.03

First Draft

January 29, 2014



Pre-Kindergarten Classroom

	Unit Area (NSF)	Qty	Total Area (NSF)
Actual	998	2	1,996

Design Occupancy

1 Instructor + 24 Students

Typical Room Dimensions (Feet)

35.0 x 28.5

Built-In Casework

Plastic Laminate wall and base cabinets with low counters and lockable doors (30" Height)
 Plastic Laminate wall and base cabinets with low counters and open shelving (30" Height)
 Plastic Laminate wall cabinets (24"D) above open wardrobe units

- 1 36"x24"x84" Lockable Teacher wardrobe unit w/ hooks and adjustable shelves
- 4 48"x84" Open plastic laminate student wardrobe units w/ coat hooks and adjustable shelf
- 1 36"x84" Open plastic laminate student wardrobe unit w/ coat hooks and adjustable shelf

Visual Display

- 16 Non-Glare Markerboard (in linear feet) - Main Teaching Space
- 4 Tackboard (in linear feet) - Main Teaching Space
- 4 Tackboard (in linear feet) - Main Teaching Space
- 4 Tackboard (in linear feet) - Accessory Teaching Space
- 4 Tackboard (in linear feet) - Accessory Teaching Space
- 24 12" Tackstrip (in linear feet) - Main Teaching Space

Furniture and Equipment (Not in Contract)

- Student tables and chairs
- Teacher desk and chair
- 2 2-drawer teacher file cabinets
- Pencil Sharpener

Technology

- 1 Ceiling Mounted Data Projector (NIC) - Power and Data Outlets Provided
- 1 Teacher Computer and Printer (NIC) - Power and Data Outlets Provided
- 1 Data and Auxiliary Connections to Teacher Station
- 1 Telephone (NIC) - Outlet Provided

Plumbing, Mechanical and Electrical Systems

Sink in classroom (accessible by children)
 Electrical outlets conveniently located
 Adjacent Toilet Room accessible from classroom
 Analog Clock
 Ceiling Mounted Speaker

Lighting

Access to Natural Daylight (Windows)
 Fluorescent Lighting
 Dual Level Light Switches

Other Considerations

Shared storage closet between adjacent Pre-Kindergarten classrooms

Room Finishes

Ceiling	2'x2' AC.T.
Walls	Painted CMU
Casework	Plastic Laminate
Horizontal Surfaces	Plastic Laminate
Floor	VCT
Floor Base	Rubber

Notes:

Tackboards and markerboards to be mounted lower
 for younger student accessibility

2-1.00

Pre-Kindergarten Toilet

	Unit Area (NSF)	Qty	Total Area (NSF)
Actual	59	2	118

Design Occupancy

1 Person

Typical Room Dimensions (Feet)

8.0 x 7.4

Plumbing, Mechanical and Electrical Systems

Automatic flush valves/sensors on sink and toilet
 Student height wall switches
 Juvenile size fixtures

Lighting

Fluorescent Lighting

Other Considerations

18"W x 36"H Wall Mounted Mirror Above Lavatory
 ADA Accessible / Grab Bars

Room Finishes

Ceiling	Gyp. Board
Walls	Epoxy Painted CMU
Casework	N/A
Horizontal Surfaces	N/A
Floor	Ceramic Tile
Floor Base	Ceramic Tile

Notes:

2-1.00a

Pre-Kindergarten Storage

	Unit Area (NSF)	Qty	Total Area (NSF)
Actual	115	1	115

Design Occupancy

Not Applicable

Typical Room Dimensions (Feet)

7.5 x 15.3

Built-In Casework

(4) 24"D x 15'-4"W x 1"T adjustable plastic laminate shelves on heavy duty standards

Plumbing, Mechanical, and Electrical Systems

Standard Heating and Cooling

Ventilation / Exhaust

Lighting

Fluorescent Lighting

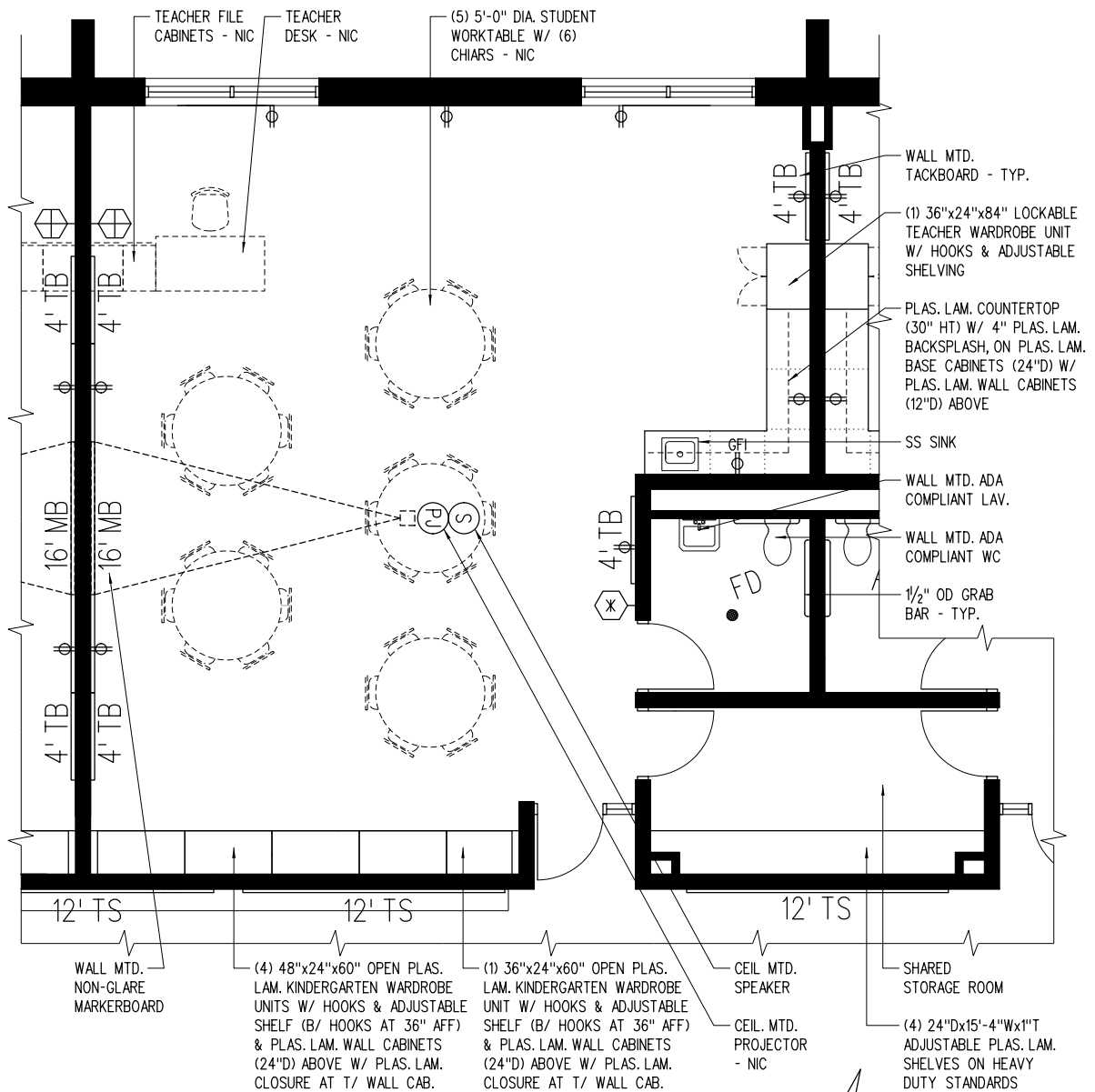
Room Finishes

Ceiling	2'x2' AC.T.
Walls	Painted CMU
Casework	Plastic Laminate
Horizontal Surfaces	N / A
Floor	VCT
Floor Base	Rubber

Notes:

2-1.00b

Pre-Kindergarten Classroom



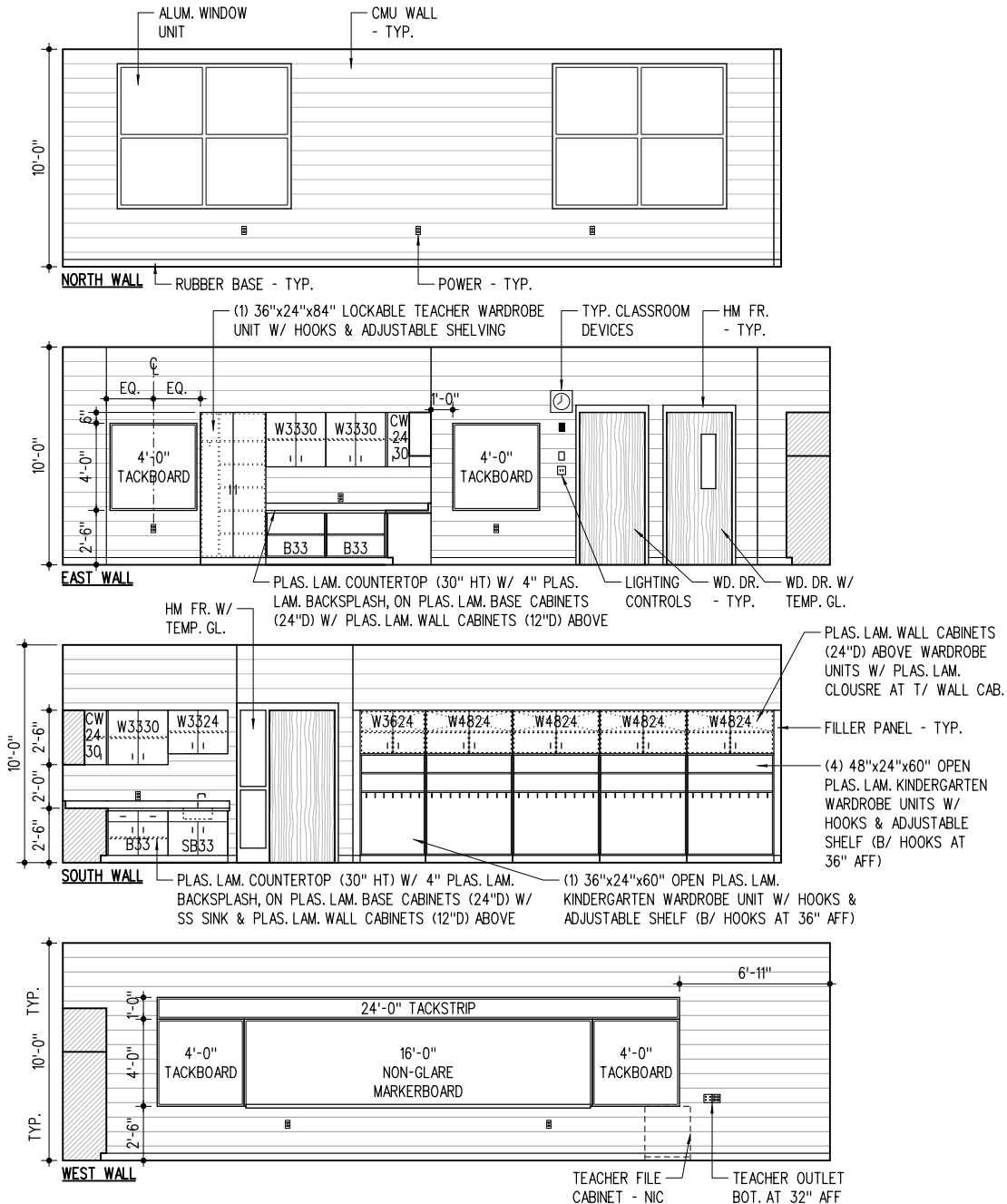
FLOOR PLAN

1/8" = 1'-0"



2-1.01

Pre-Kindergarten Classroom

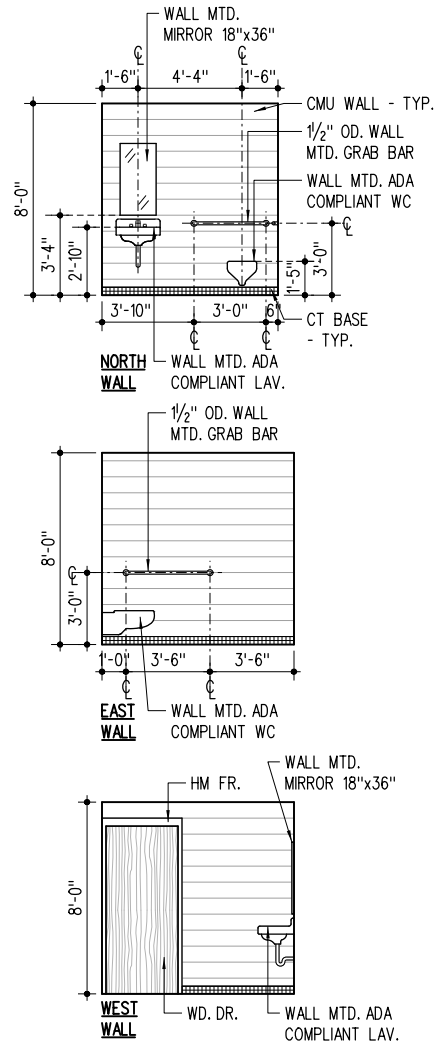


INTERIOR ELEVATIONS

1/8" = 1'-0" 0 2 4 8 16 24

2-1.02

Pre-Kindergarten Toilet

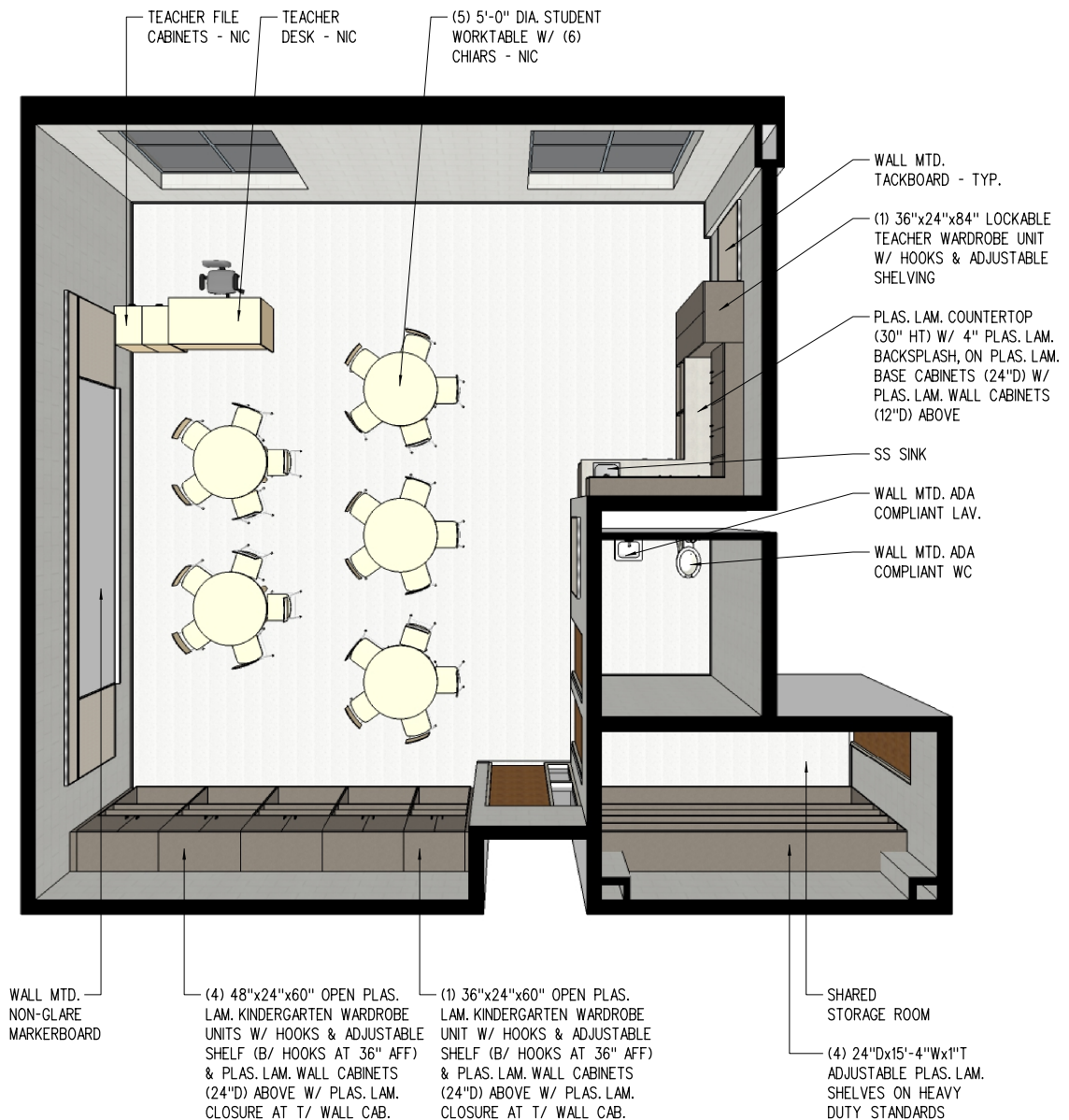


INTERIOR ELEVATIONS



2-1.02a

Pre-Kindergarten Classroom



PERSPECTIVE

NS

2-1.03

Kindergarten Classroom

	Unit Area (NSF)	Qty	Total Area (NSF)
Actual	998	5	4,990

Design Occupancy

1 Instructor + 24 Students

Typical Room Dimensions (Feet)

35.0 x 28.5

Built-In Casework

Plastic Laminate wall and base cabinets with low counters and lockable doors (30" Height)
 Plastic Laminate wall and base cabinets with low counters and open shelving (30" Height)
 Plastic Laminate wall cabinets (24"D) above open wardrobe units

- 1 36"x24"x84" Lockable Teacher wardrobe unit w/ hooks and adjustable shelves
- 4 48"x84" Open plastic laminate student wardrobe units w/ coat hooks and adjustable shelf
- 1 36"x84" Open plastic laminate student wardrobe unit w/ coat hooks and adjustable shelf

Visual Display

- 16 Non-Glare Markerboard (in linear feet) - Main Teaching Space
- 4 Tackboard (in linear feet) - Main Teaching Space
- 4 Tackboard (in linear feet) - Main Teaching Space
- 4 Tackboard (in linear feet) - Accessory Teaching Space
- 4 Tackboard (in linear feet) - Accessory Teaching Space
- 24 12" Tackstrip (in linear feet) - Main Teaching Space

Furniture and Equipment (Not in Contract)

- Student tables and chairs
- Teacher desk and chair
- 2 2-drawer teacher file cabinets
- Pencil Sharpener

Technology

- 1 Ceiling Mounted Data Projector (NIC) - Power and Data Outlets Provided
- 1 Teacher Computer and Printer (NIC) - Power and Data Outlets Provided
- 1 Data and Auxiliary Connections to Teacher Station
- 1 Telephone (NIC) - Outlet Provided

Plumbing, Mechanical and Electrical Systems

Sink in classroom (accessible by children)
 Electrical outlets conveniently located
 Adjacent Toilet Room accessible from classroom
 Analog Clock
 Ceiling Mounted Speaker

Lighting

Access to Natural Daylight (Windows)
 Fluorescent Lighting
 Dual Level Light Switches

Other Considerations

Shared storage closet between adjacent Kindergarten classrooms

Room Finishes

Ceiling	2'x2' AC.T.
Walls	Painted CMU
Casework	Plastic Laminate
Horizontal Surfaces	Plastic Laminate
Floor	VCT
Floor Base	Rubber

Notes:

Tackboards and markerboards to be mounted lower
 for younger student accessibility

2-2.00

Kindergarten Toilet

	Unit Area (NSF)	Qty	Total Area (NSF)
Actual	59	5	295

Design Occupancy

1 Person

Typical Room Dimensions (Feet)

8.0 x 7.4

Plumbing, Mechanical and Electrical Systems

Automatic flush valves/sensors on sink and toilet
 Student height wall switches
 Juvenile size fixtures

Lighting

Fluorescent Lighting

Other Considerations

18"W x 36"H Wall Mounted Mirror Above Lavatory
 ADA Accessible / Grab Bars

Room Finishes

Ceiling	Gyp. Board
Walls	Epoxy Painted CMU
Casework	N/A
Horizontal Surfaces	N/A
Floor	Ceramic Tile
Floor Base	Ceramic Tile

Notes:

2-2.00a

Kindergarten Storage

	Unit Area (NSF)	Qty	Total Area (NSF)
Actual	115	3	285

Design Occupancy

Not Applicable

Typical Room Dimensions (Feet)

7.5 x 15.3

Built-In Casework

(4) 24"D x 15'-4"W x 1"T adjustable plastic laminate shelves on heavy duty standards

Room Finishes

Ceiling	2'x2' AC.T.
Walls	Painted CMU
Casework	Plastic Laminate
Horizontal Surfaces	N / A
Floor	VCT
Floor Base	Rubber

Plumbing, Mechanical, and Electrical Systems

Standard Heating and Cooling

Ventilation / Exhaust

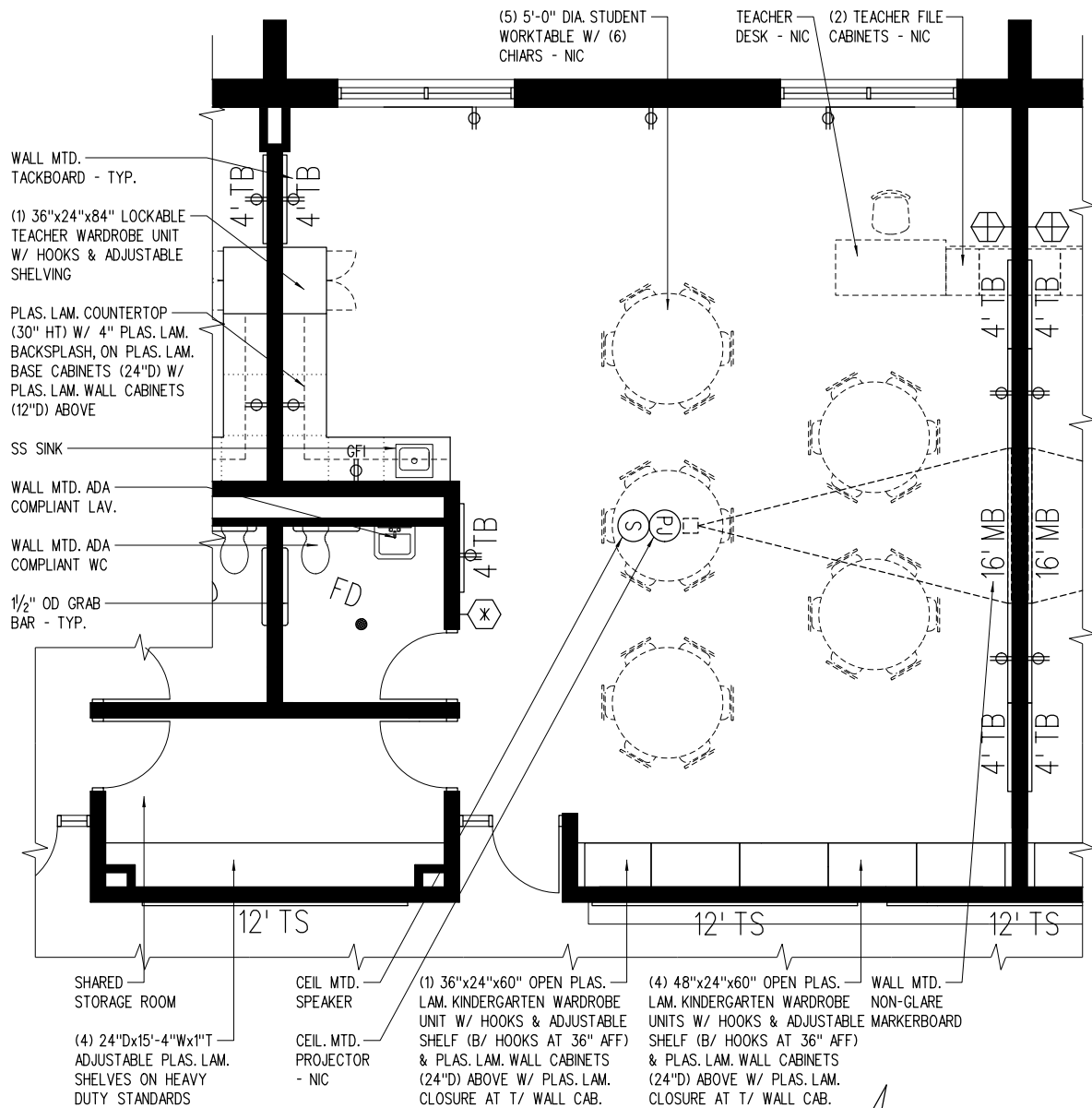
Lighting

Fluorescent Lighting

Notes:

2-2.00b

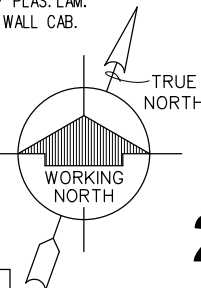
Kindergarten Classroom



FLOOR PLAN

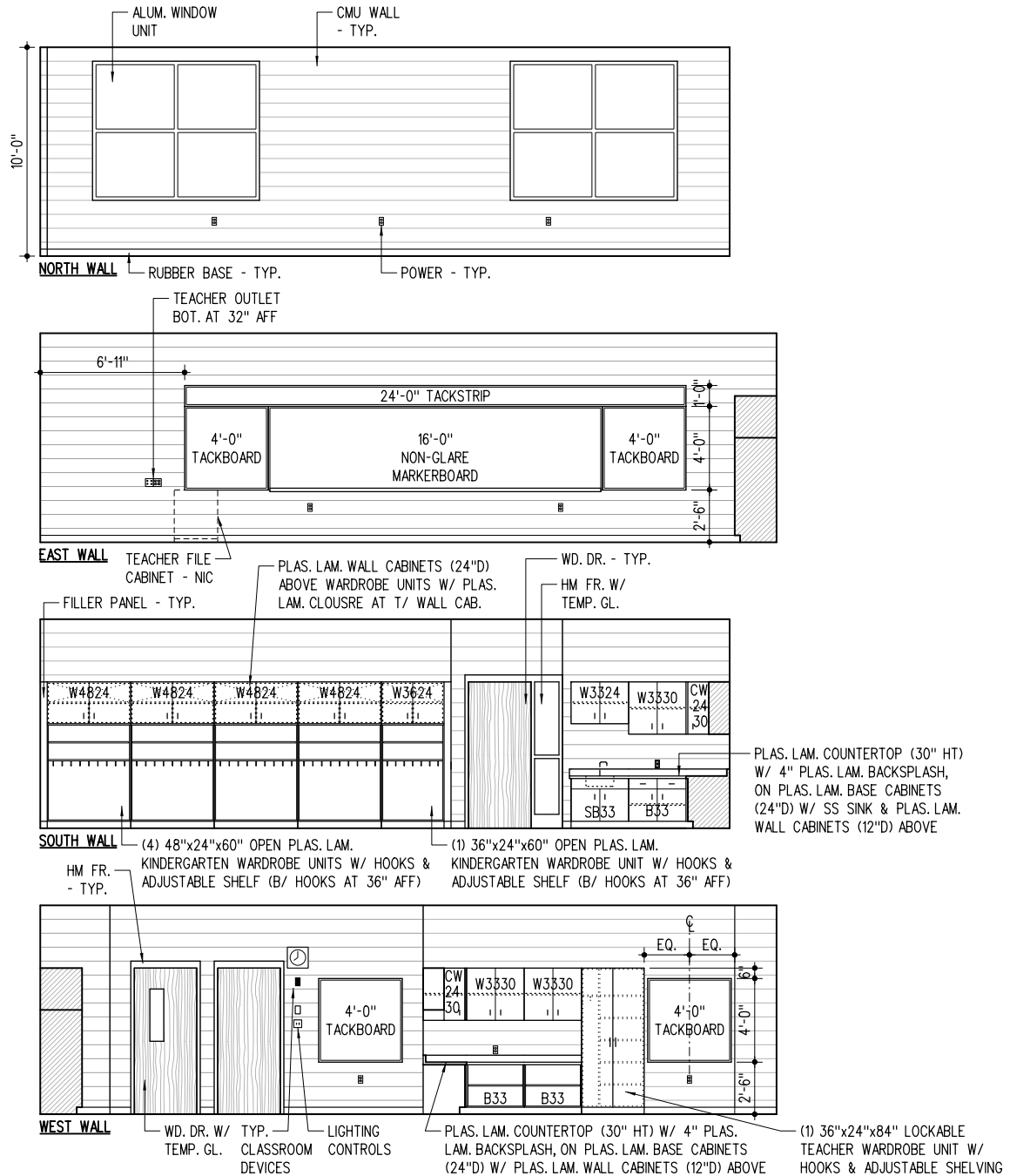
1/8" = 1'-0"

0 2 4 8 16 24



2-2.01

Kindergarten Classroom

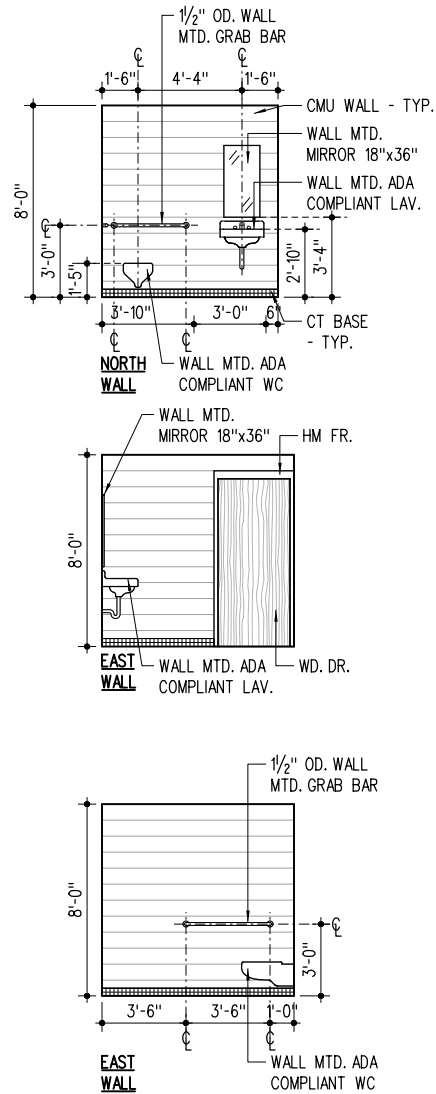


INTERIOR ELEVATIONS

$$1/8'' = 1'-0'' \quad 0 \quad 2 \quad 4 \quad 8 \quad 16 \quad 24$$

2-2.02

Kindergarten Toilet

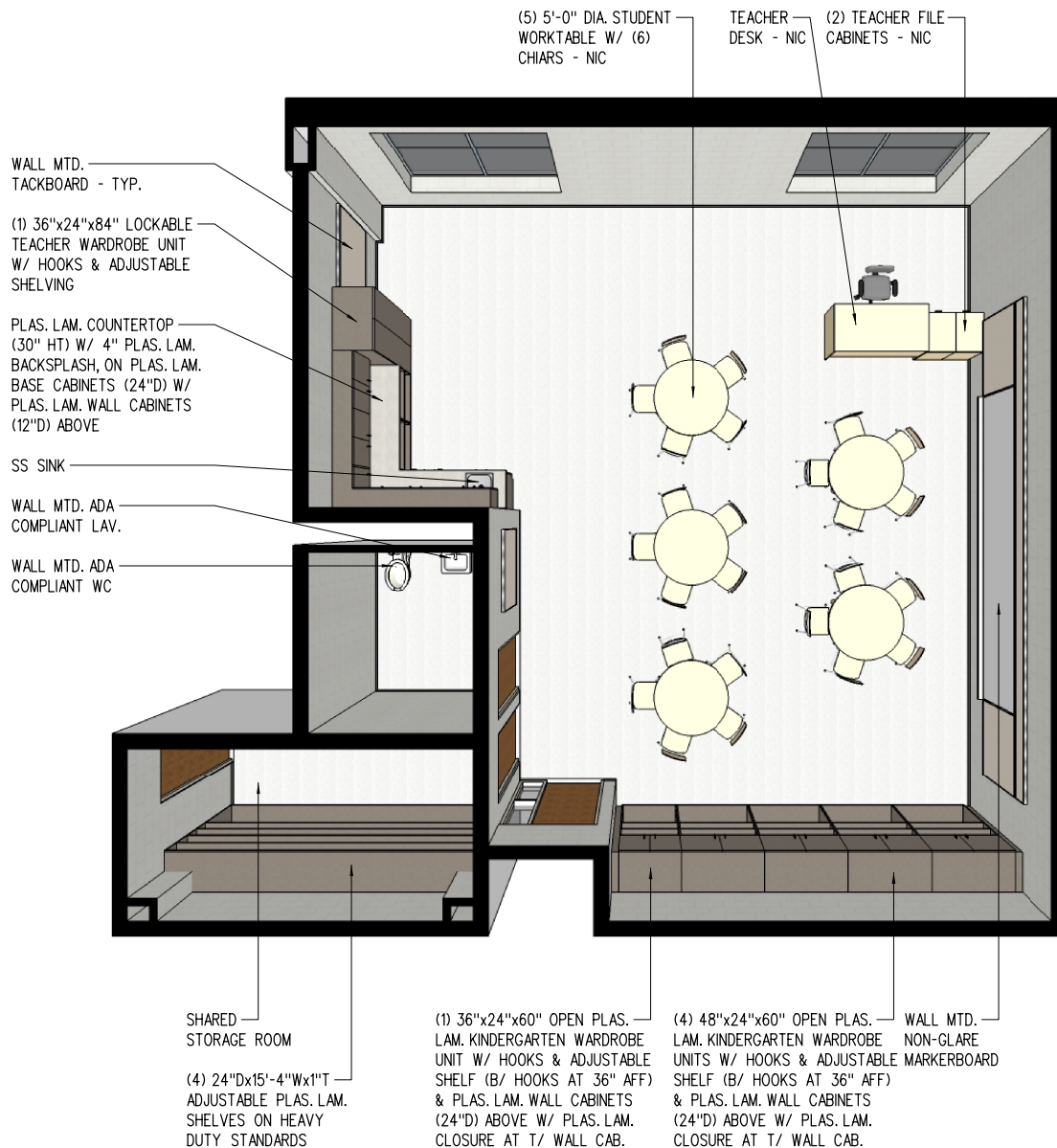


INTERIOR ELEVATIONS



2-2.02a

Kindergarten Classroom



PERSPECTIVE

NS

2-2.03

1st Grade Classroom

	Unit Area (NSF)	Qty	Total Area (NSF)
Actual	963	5	4,815

Design Occupancy

1 Instructor + 28 Students

Typical Room Dimensions (Feet)

35.3 x 27.3

Built-In Casework

Lockable base cabinets with plastic laminate countertop

- 1 48"x24"x84" Lockable Teacher wardrobe unit w/ hooks and adjustable shelves
- 1 48"x24"x84" Lockable Teacher storage unit w/ adjustable shelves

Visual Display

- 14 Non-Glare Markerboard (in linear feet) - Main Teaching Space
- 12 Markerboard (in linear feet) - Accessory Teaching Space
- 4 Tackboard (in linear feet) - Main Teaching Space
- 4 Tackboard (in linear feet) - Main Teaching Space
- 6 Tackboard (in linear feet) - Accessory Teaching Space
- 22 12" Tackstrip (in linear feet) - Main Teaching Space
- 18 12" Tackstrip (in linear feet) - Accessory Teaching Space

Furniture and Equipment (Not In Contract)

- Student desks or tables with chairs
- Teacher desk and chair
- 2 2-drawer teacher file cabinets
- Mobile storage cabinets and bookshelves
- Pencil Sharpener

Technology

- 1 Ceiling Mounted Data Projector (NIC) - Power and Data Outlets Provided
- 1 Teacher Computer and Printer (NIC) - Power and Data Outlets Provided
- 1 Data and Auxiliary Connections to Teacher Station
- 1 Telephone (NIC) - Outlet Provided

Plumbing, Mechanical and Electrical Systems

- Sink in classroom (accessible by children)
- Electrical outlets conveniently located
- Analog Clock
- Ceiling Mounted Speaker

Lighting

- Access to Natural Daylight (Windows)
- Fluorescent Lighting
- Dual Level Light Switches

Other Considerations

- Open space along exterior wall for mobile carts, book shelves, additional desks (all NIC)

Room Finishes

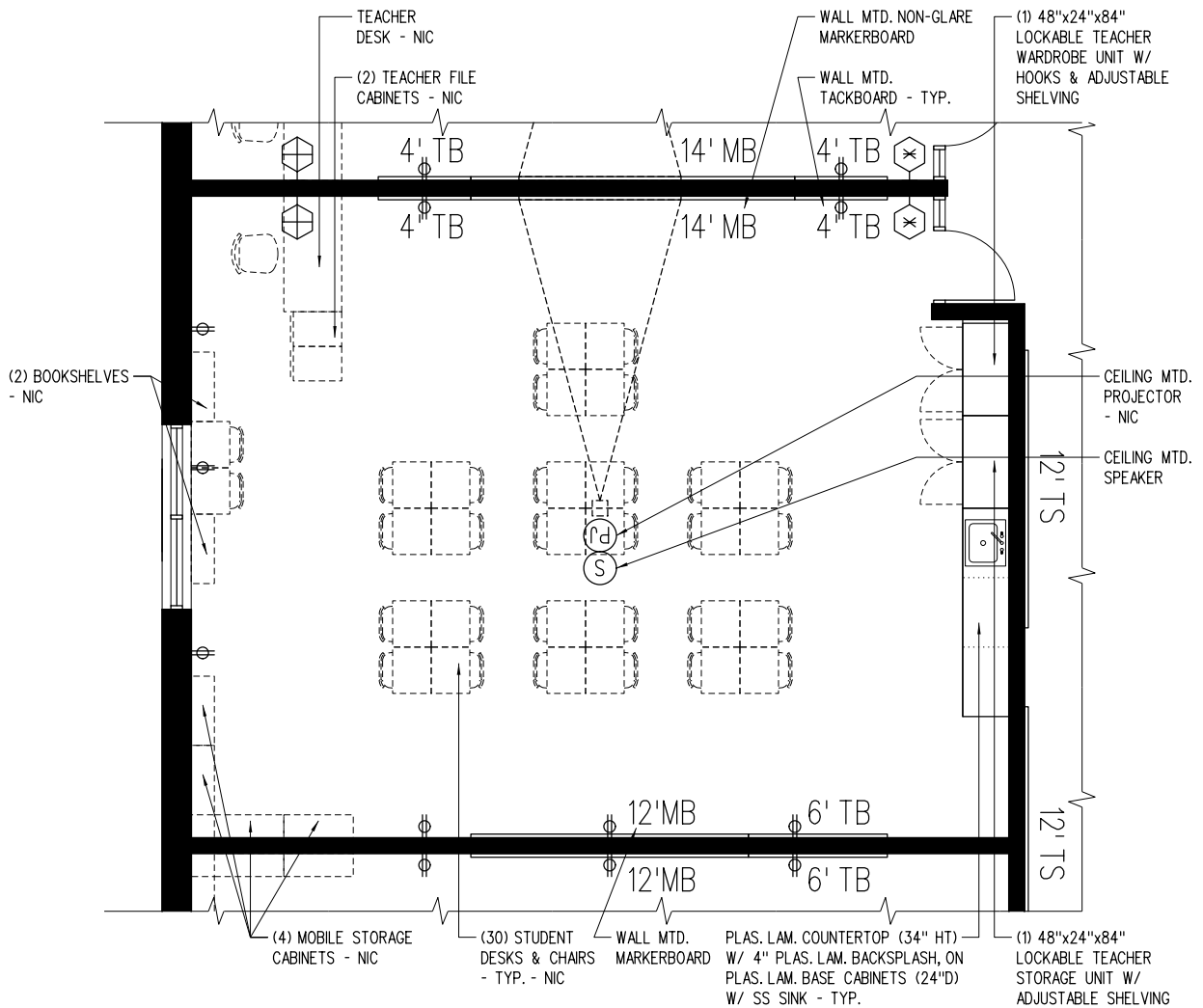
Ceiling	2'x2' AC.T.
Walls	Painted CMU
Casework	Plastic Laminate
Horizontal Surfaces	Plastic Laminate
Floor	VCT
Floor Base	Rubber

Notes:

Coat hooks and shelves provided in adjacent corridor for student use. Similar to existing condition.

2-3.00

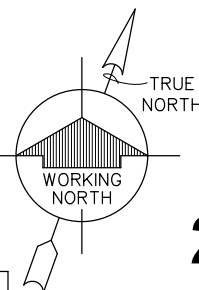
1st Grade Classroom



FLOOR PLAN

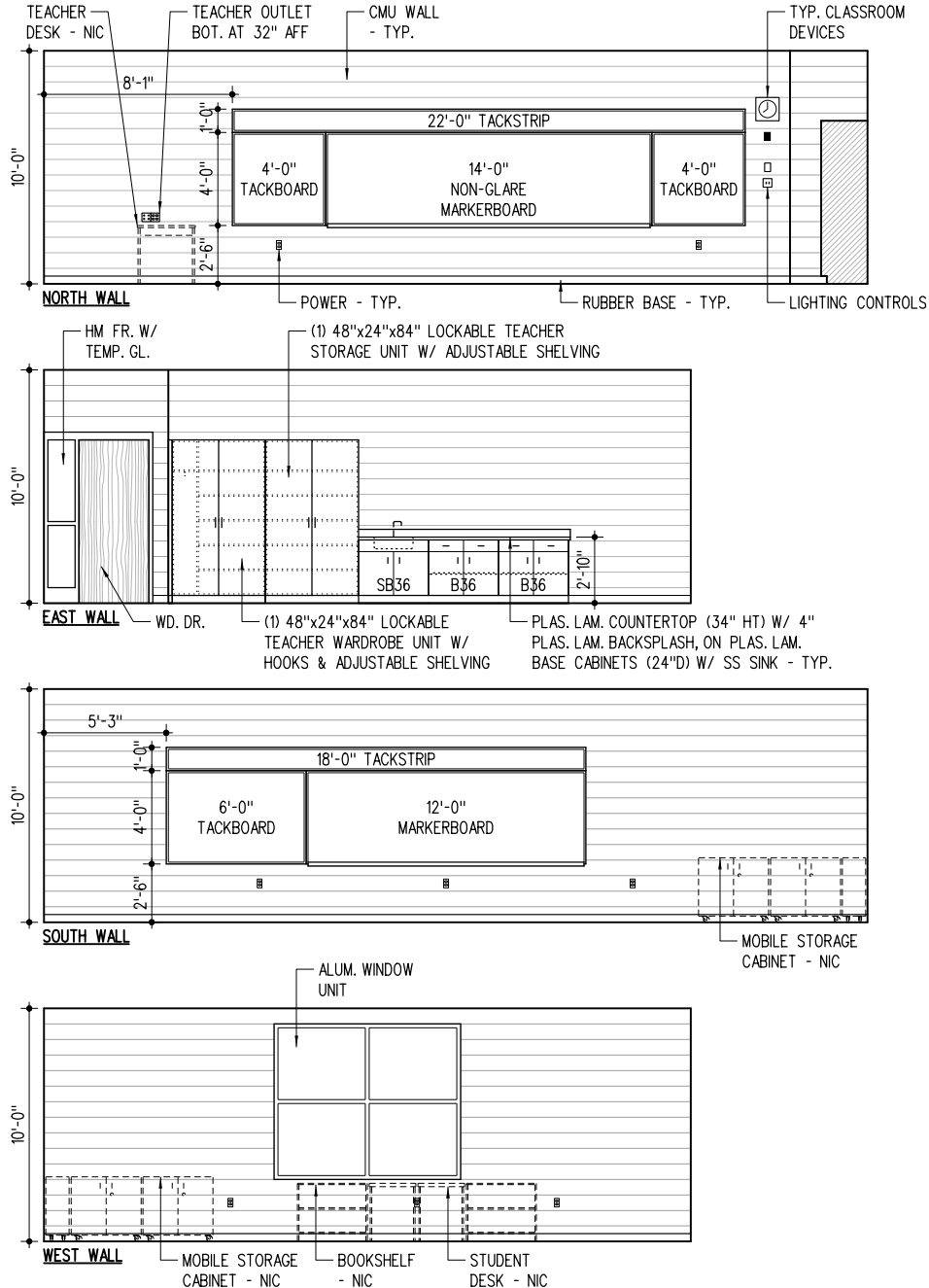
1/8" = 1'-0"

0 2 4 8 16 24



2-3.01

1st Grade Classroom

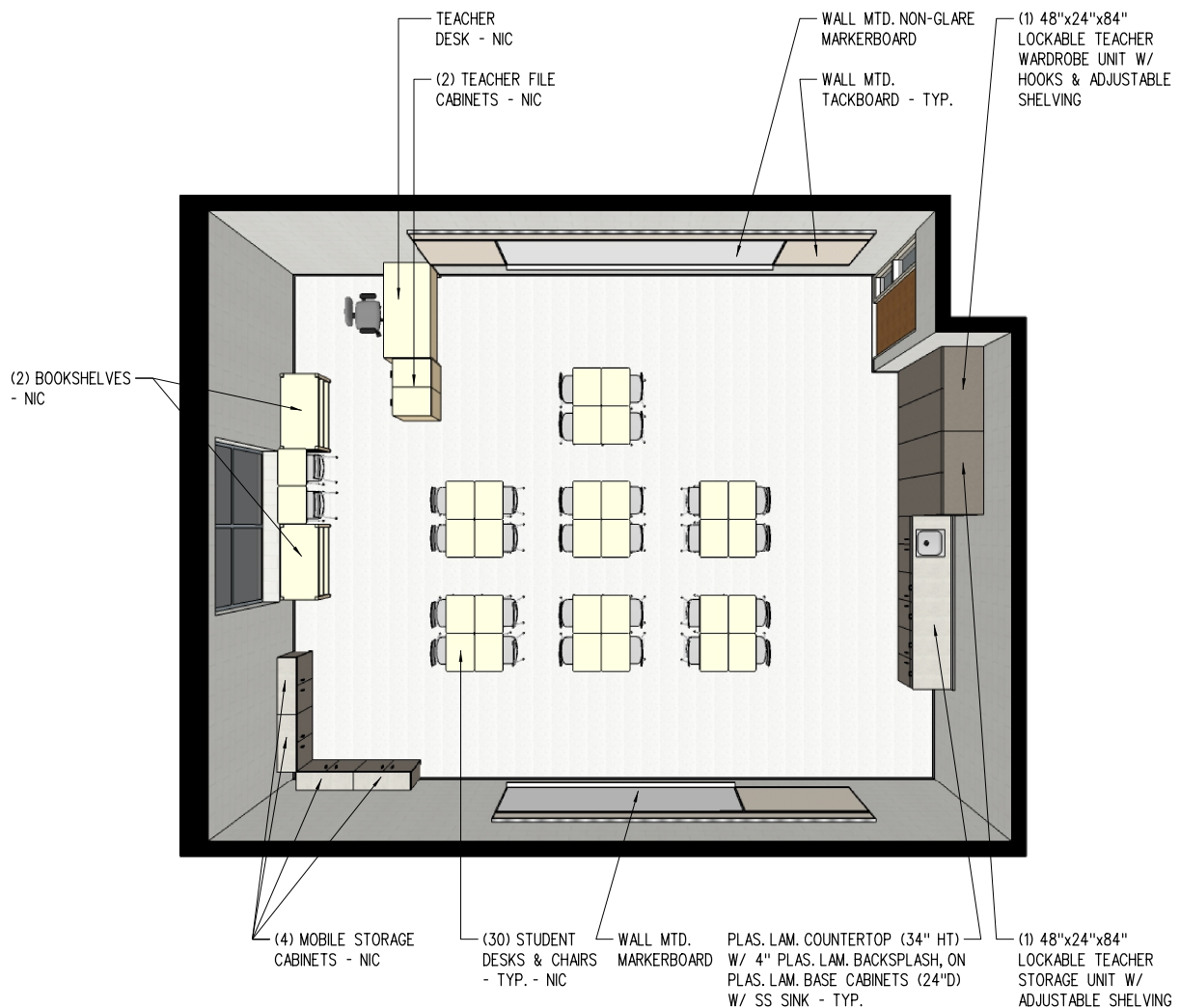


INTERIOR ELEVATIONS



2-3.02

1st Grade Classroom



PERSPECTIVE

NS

2-3.03