

Northview Elem School
Peru ESD 124
Peru, ILLINOIS



ILLINOIS
SCHOOL
REPORT
CARD

GRADES : PK K 1

State and federal laws require public school districts to release report cards to the public each year.

Starting in 2009, charter school information is included in district statistics.

STUDENTS

RACIAL/ETHNIC BACKGROUND AND OTHER INFORMATION															
	White	Black	Hispanic	Asian	Native Hawaiian /Pacific Islander	American Indian	Two or More Races	Percent Low-Income	Percent Limited-English-Proficient	Percent IEP	High Sch. Dropout Rate	Chronic Truancy Rate	Mobility Rate	Attendance Rate	Total Enrollment
School	76.8	1.4	12.0	4.2	0.0	0.0	5.6	46.8	9.2	15.5		0.0	15.1	95.7	284
District	81.5	1.0	11.5	2.4	0.0	0.1	3.4	41.1	5.3	13.0		0.2	11.4	96.0	1,062
State	51.4	18.3	23.0	4.1	0.1	0.3	2.8	48.1	8.8	14.0		3.2	12.8	94.0	2,074,806

Low-income students come from families receiving public aid; live in institutions for neglected or delinquent children; are supported in foster homes with public funds; or are eligible to receive free or reduced-price lunches.

IEP Students are those students eligible to receive special education services.

Limited-English-proficient students are those students eligible for transitional bilingual programs.

Mobility rate is based on the number of times students enroll in or leave a school during the school year.

Chronic truants are students who are absent from school without valid cause for 18 or more of the last 180 school days.

Total Enrollment is based on Home School.

INSTRUCTIONAL SETTING

PARENTAL CONTACT*		STUDENT-TO-STAFF RATIOS			
	Percent	Pupil-Teacher Elementary	Pupil-Teacher Secondary	Pupil-Certified Staff	Pupil-Administrator
School	100.0	--	--	--	--
District	100.0	16.9		12.5	236.0
State	96.0	18.8		13.6	211.3

* Parental contact includes parent-teacher conferences, parental visits to school, school visits to home, telephone conversations, and written correspondence.

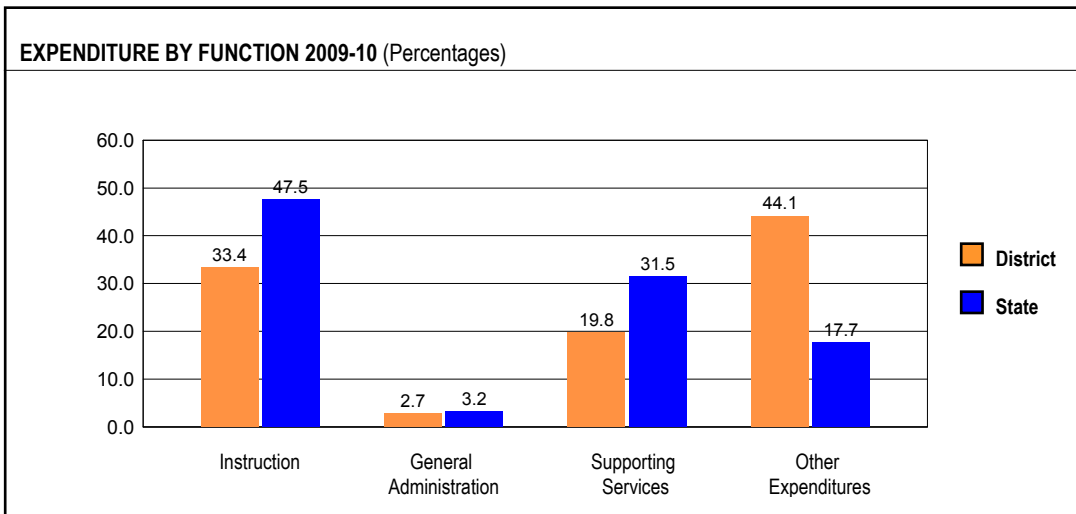
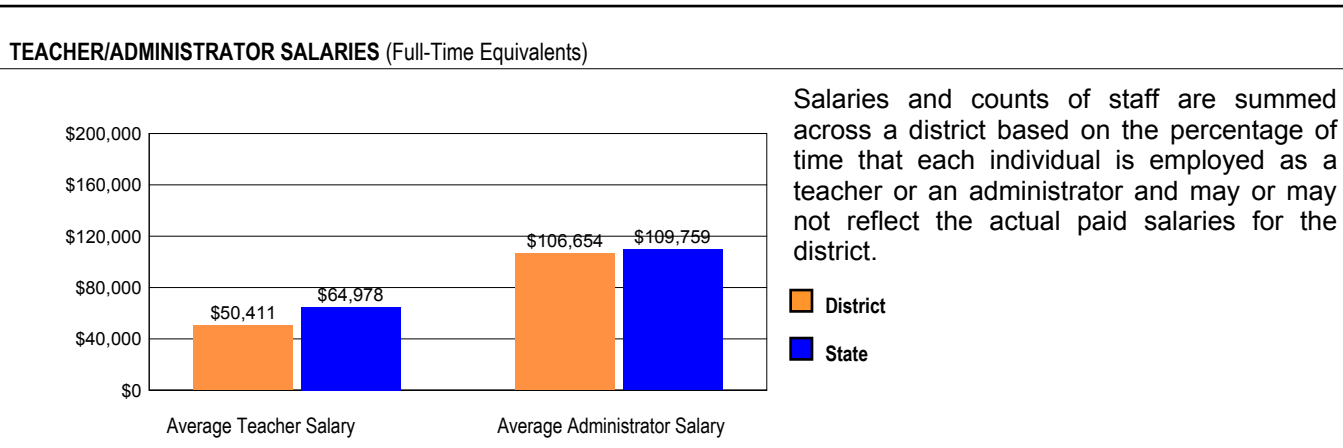
AVERAGE CLASS SIZE (as of the first school day in May)										
Grades	K	1	2	3	4	5	6	7	8	9 - 12
School	19.8	18.4								
District	19.8	18.4								
State	20.9	21.6								

TEACHER INFORMATION (Full-Time Equivalents)												
	White	Black	Hispanic	Asian	Native Hawaiian/Pacific Islander	American Indian	Two or More Races	Unknown	Male	Female	Total Number	
District	100.0	0.0	0.0	0.0	0.0	0.0	0.0	0.0	13.6	86.4	74	
State	82.4	6.1	5.0	1.2	0.1	0.1	0.7	4.3	23.1	76.9	128,262	

TEACHER INFORMATION (Continued)					
	Average Teaching Experience (Years)	% of Teachers with Bachelor's Degrees	% of Teachers with Master's & Above	% of Teachers with Emergency or Provisional Credentials	% of Classes Not Taught by Highly Qualified Teachers
School	--	--	--	0.0	0.0
District	12.9	68.8	31.2	0.0	0.0
State	13.2	39.5	60.4	0.6	0.8

Some teacher/administrator data are not collected at the school level.

SCHOOL DISTRICT FINANCES



REVENUE BY SOURCE 2009-10				EXPENDITURE BY FUND 2009-10			
	District	District %	State %		District	District %	State %
Local Property Taxes	\$5,718,004	52.2	58.9	Education	\$7,097,098	45.7	72.9
Other Local Funding	\$2,714,028	24.8	6.4	Operations & Maintenance	\$1,765,409	11.4	6.0
General State Aid	\$1,061,960	9.7	14.9	Transportation	\$335,099	2.2	3.8
Other State Funding	\$533,174	4.9	7.5	Debt Service	\$1,170,854	7.5	7.2
Federal Funding	\$926,583	8.5	12.4	Tort	\$81,673	0.5	1.2
TOTAL	\$10,953,749			Municipal Retirement/ Social Security	\$246,747	1.6	1.9
				Fire Prevention & Safety	\$202,240	1.3	0.7
				Site & Construction/ Capital Improvement	\$4,631,368	29.8	6.4
				TOTAL	\$15,530,488		

OTHER FINANCIAL INDICATORS				
	2008 Equalized Assessed Valuation per Pupil	2008 Total School Tax Rate per \$100	2009-10 Instructional Expenditure per Pupil	2009-10 Operating Expenditure per Pupil
District	\$200,872	2.97	\$5,724	\$9,893
State	**	**	\$6,773	\$11,537

** Due to the way Illinois school districts are configured, state averages for equalized assessed valuation per pupil and total school tax rate per \$100 are not provided.

Equalized assessed valuation includes all computed property values upon which a district's local tax rate is calculated.

Total school tax rate is a district's total tax rate as it appears on local property tax bills.

Instructional expenditure per pupil includes the direct costs of teaching pupils or the interaction between teachers and pupils.

Operating expenditure per pupil includes the gross operating cost of a school district excluding summer school, adult education, bond principal retired, and capital expenditures.

PLANNED IMPROVEMENT FOR THE SCHOOL AND DISTRICT

This is the final section of the school report card in which your school and district provide information below on areas of success and areas for planned improvement based on your school's improvement plan.

Peru Elementary School District 124 Achievement Information

Students in Peru Elementary School District continue to grow in their academic achievement as indicated on the Illinois Standards Achievement Test (ISAT), as well as on local assessments. Overall district scores from the spring 2011 ISAT were once again very strong, with 87.8 percent of all students in grades 3 through 8 meeting or exceeding standards in mathematics, while 83.6 percent did so in reading.

Overall student ISAT scores in Peru ESD 124 have continued on a seven year upward trend in both reading and math. As a comparison, the overall ISAT scores were 75.5 percent meeting and exceeding in mathematics in 2004-05 and 71.3 percent in reading that same year. In that same time period, the district's percentage of economically disadvantaged students has climbed from 24.9 percent to 41.1 percent, providing clear evidence that the students and staff of Peru Schools have completely bucked the trend of increasing low income rates predicating lower overall student achievement scores.

These improvements are very noteworthy and we are proud of the growth of our students; however, the teachers, administration and staff will continue to focus not on a state test, but on authentic learning opportunities and developing a deep, meaningful curriculum for our students. Ongoing efforts to improve student achievement will continue with even more focus as the district focuses on aligning with the Common Core Standards.

**AREAS OF SUCCESSES AND IMPROVEMENT
NORTHVIEW SCHOOL
2011**

TEACHING AND LEARNING	
SUCCESSES	AREAS OF IMPROVEMENT
<p>A variety of assistance for students who are struggling academically:</p> <ul style="list-style-type: none"> • Reading Recovery – 2 teachers • Title I Reading Services • Social Work Assistance • Bilingual Aide • Summer School program • Teacher aides who work with identified students in areas of weakness • Problem Solving Team Approach that supports the Rtl initiatives <p>Developmental Preschool Program</p> <p>Tuition Based Bright Futures Preschool that has a mix of “at risk” students and “non-at risk” students.</p> <p>Intervention Block that addresses the needs of struggling students as well as enriched students. K-1 students are homogenously groups for 30 minutes five days a week.</p> <p>Early Dismissal Schedule Weekly to allow for professional development among colleagues.</p> <p>Technology:</p> <ul style="list-style-type: none"> • 25 station computer lab • Smart boards in 100% of the Reg. Ed. Classrooms • 10 IPAD’s to be used as a pilot in classrooms • Two portable Lap-tops and 1 LCD projector for classroom projects • Two portable Elmos • Digital cameras, video camera, and voice recorders for classroom use • Variety of educational software • Individual teacher web pages • Subscription to <i>United Streaming</i> 	<p>Professional Development in the following areas:</p> <ul style="list-style-type: none"> • Writing/Write Traits • Differentiation • Guided reading/Balanced Literacy instructional techniques • Serving small populations of English Language Learners • Common Core Standards in Math and ELA • PreK Literacy <p>Servicing students that need enrichment</p> <p>More training in technology and how to utilize the teacher web pages to their fullest potential.</p> <ul style="list-style-type: none"> • Smart Board Training • IPAD training • Google Docs training

STUDENT LEARNING, PROGRESS AND ACHIEVEMENT	
SUCCESSSES	AREAS OF IMPROVEMENT
<p>The Bright Futures Preschool and Developmental Preschool use Heggerty's Phonemic Awareness Program, which helps students enter kindergarten ready to read.</p> <p>Assessment: Continue to use AIMSweb Early Literacy and Early Numeracy as a needed intervention for the RtI process. Begin local assessments by using the Fountas and Pinnell benchmark system, Runny Records, and Writing Samples.</p> <p>Reading</p> <ul style="list-style-type: none"> • All Grade Levels are above state averages in Reading Scores • Guided Reading implemented • The core reading series, Rigby's LBD, is implemented by all K-5 teachers • Students are checking more books out during library time • K-1 teachers are focusing on handwriting and writing instruction with increased time <p>Math</p> <ul style="list-style-type: none"> • ISAT scores are significantly above the state averages • Begin aligning teaching and learning to the Common Core Standards • Many manipulatives and hands-on activities incorporated into the curriculum • District Math Curriculum Committee will continue to meet during the school year to address curricular needs based on the new CCSS 	<p>The use of the Curriculum Mapping software to facilitate identification of curricular gaps and redundancies in Math.</p> <p>Math Interventions for students needing Tier II or Tier III Math instruction.</p> <p>Professional development in the Comprehensive Literacy Model for the regular classroom teachers.</p> <p>Continued training and use of data during Problem Solving Meetings to address the needs of students and to allow changes and modifications in teaching methods and services to students.</p> <p>Research the possibility of offering <i>Project Success</i>, an after school tutoring program, for students in first grade.</p>

LEARNING COMMUNITY	
SUCCESSSES	AREAS OF IMPROVEMENT
<p>Parent Communication</p> <ul style="list-style-type: none"> • Newsletter sent out at least one time a month and posted on the school website • Progress Reports • Parents are surveyed every other year on ways to improve our school • Many parent volunteers and helpers in the classrooms <p>Student Safety Emphasized</p> <ul style="list-style-type: none"> • Building Locked • Crisis Team trained in CPI • Crisis Plan updated and Code Drills practiced • Intercoms and phones in all classrooms • Classroom doors can be locked from the inside of room • PBIS fully implemented and all staff inserved in the expectations of this program <p>Staff Leadership Teams Identified</p> <ul style="list-style-type: none"> • Curriculum Mapping • Curriculum Committee (Math) • Crisis Prevention Team • Technology Committee • PBIS Universal Team at each building and district wide <p>Staff takes advantage of professional growth opportunities to improve instruction</p> <p>Strong Parent Teacher Club (PTC) which supports students, staff and administration</p>	<p>Computerize the PreK Report Card</p> <p>Parent Involvement:</p> <ul style="list-style-type: none"> • Involve the PreK parents in as many family nights/events as possible • All teachers send home weekly newsletters <p>Technology:</p> <ul style="list-style-type: none"> • Utilize the district website to communicate with the parents and send them timely information via home email addresses • Teachers use their own website to communicate with parents about what is happening in their classroom • Utilize Alert Now to communicate with parents when appropriate